



Land Sales Specialists

Setting the trend for how Real Estate is sold in the Midwest.

www.BarnesRealty.com

18156 Hwy 59
Mound City, MO 64470
(660) 442-3177

1711 Oregon
Hiawatha, KS 66434
(785) 742-4580

1708 Prairie View Rd, Suite B
Platte City, MO 64079
(816) 219-3010

137.3 Acres, Holt County, MO

How often can you buy riverfront property with income!? These 137.3 acres have a nice, protected Eddy on the current side of the Missouri river, private levy protection, and electricity and a well. We can't authenticate the condition of these improvements, but we can certainly show you where they are (see map reference point) and should not take much \$ to get them up and operational Whether it's used as a campsite or to flood for ducks this is at least 20 maybe 30,000 worth of improvements to replace new!

LOCATION:

Property is located approximately a quarter mile West of Highway 111 on Holt 130, about 2.25 miles southwest of Corning, MO.

PRICE:

Inquire with agent

FSA INFORMATION:

See Attached.

IMPROVEMENTS:

Tract has tower Zimmatic irrigation system, well and pump.

The drive motor on the pivot is not included in the sale.

TAXES:

2022 taxes are \$1,630.74 on 248.3 taxable acres.

AGENT:

Jamie Barnes

(660) 851-1125 or Jamie@barnesrealty.com



Setting the trend for how Real Estate is sold in the Midwest.

This information is thought to be accurate; however, it is subject to verification and no liability for error and omissions is assumed. Barnes Realty has made every effort to present accurate information on the property presented. Most of the information comes from outside sources:

County/Government/Seller and human error can occur. It's the Buyer's responsibility to satisfy himself with the information presented and to determine the information to be true and accurate and the property to be suited for his intended use. The listing may be withdrawn with or without approval. The Seller further reserves the right to reject any and all offers. All inquiries, inspections, appointments, and offers must be sent through

RICK BARNES, BROKER, BARNES REALTY COMPANY, 18156 HWY 59, MOUND CITY, MO 64470 PHONE NUMBER: 1-660-442-3177.

137.30 Acres, Holt County, MO
Aerial Photos



137.30 Acres, Holt County, MO
Aerial Photo



Riverfront Photos



PHOTOS PROVIDED BY: RICK BARNES, BROKER, BARNES REALTY COMPANY, 18156 HWY 59, MOUND CITY, MO 64470 PHONE NUMBER: 1-660-442-3177.

137.30 Acres, Holt County, MO
Riverfront Photos



PHOTOS PROVIDED BY: RICK BARNES, BROKER, BARNES REALTY COMPANY, 18156 HWY 59, MOUND CITY, MO 64470 PHONE NUMBER: 1-660-442-3177.

137.30 Acres, Holt County, MO
Electricity Access



Electricity Access Map

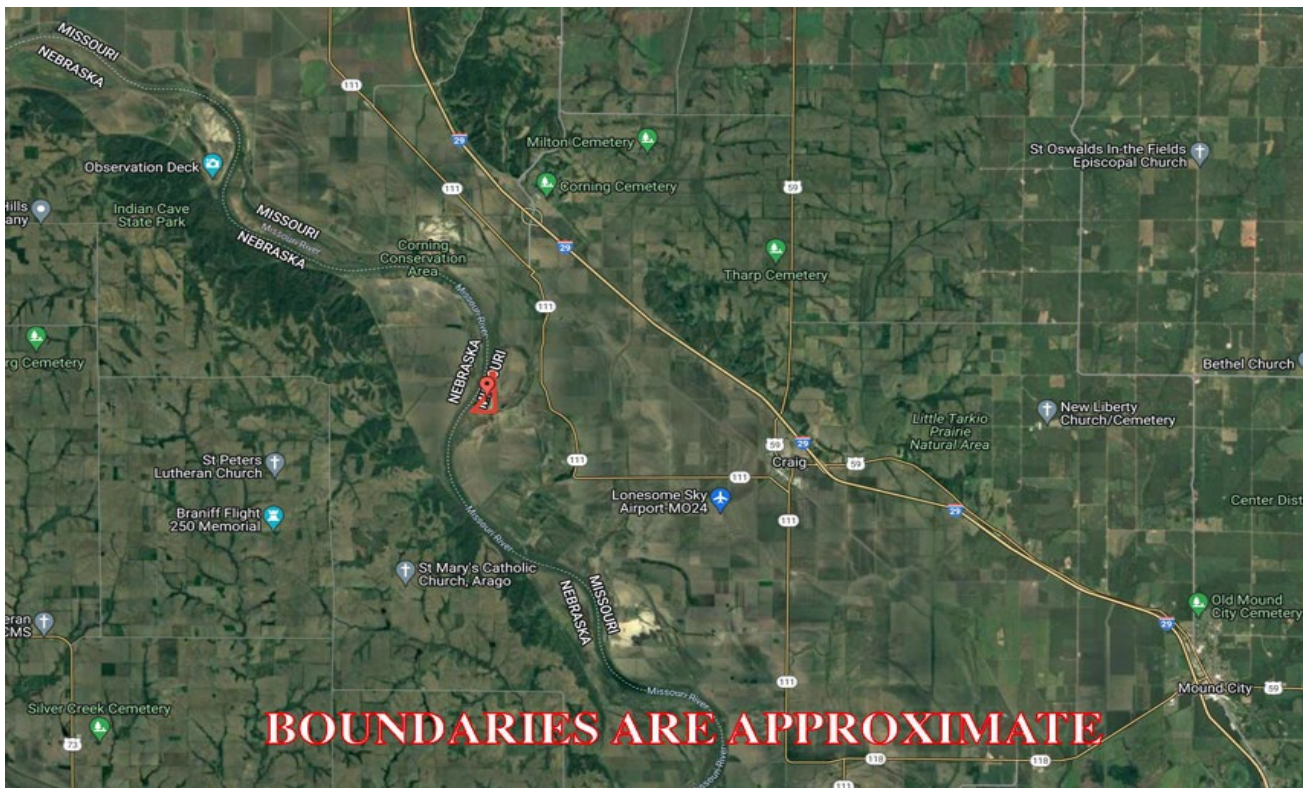


PHOTOS PROVIDED BY: RICK BARNES, BROKER, BARNES REALTY COMPANY, 18156 HWY 59, MOUND CITY, MO 64470 PHONE NUMBER: 1-660-442-3177.

137.30 Acres, Holt County, MO
Google Aerial Map

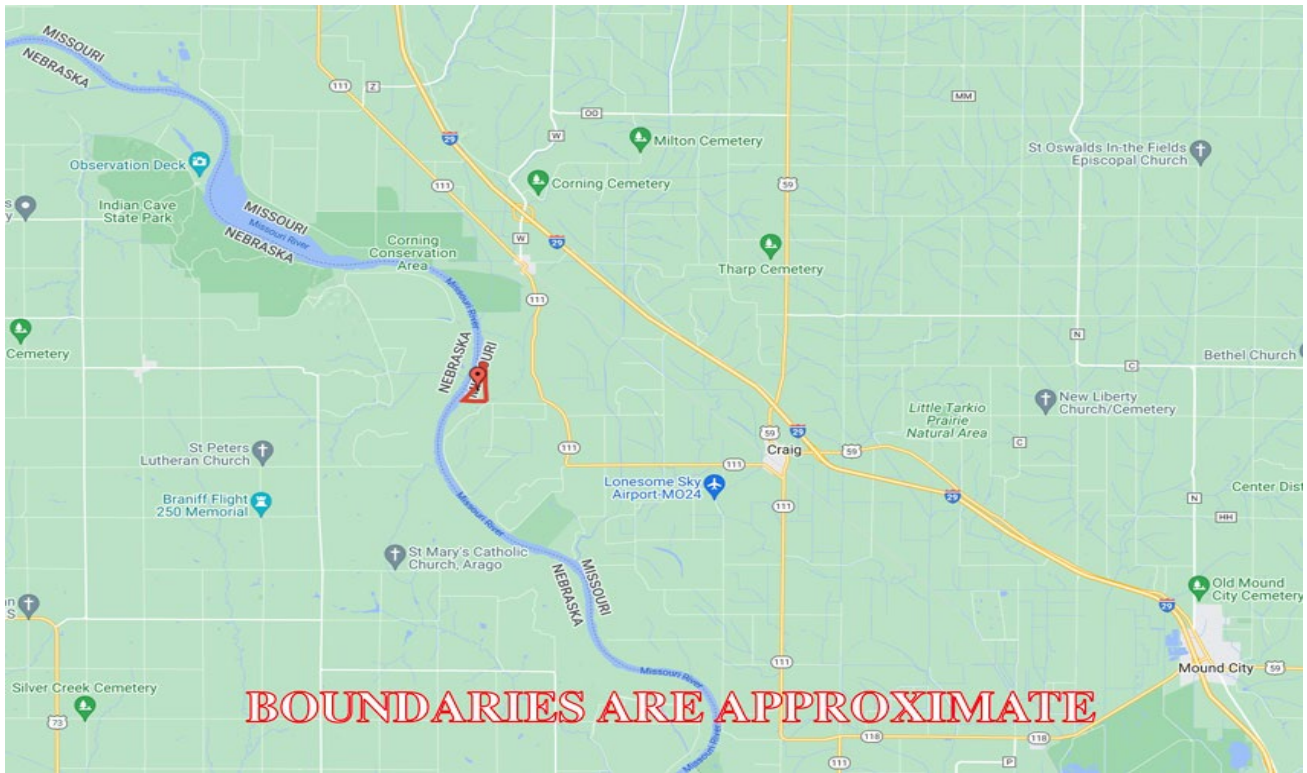


General Location Map



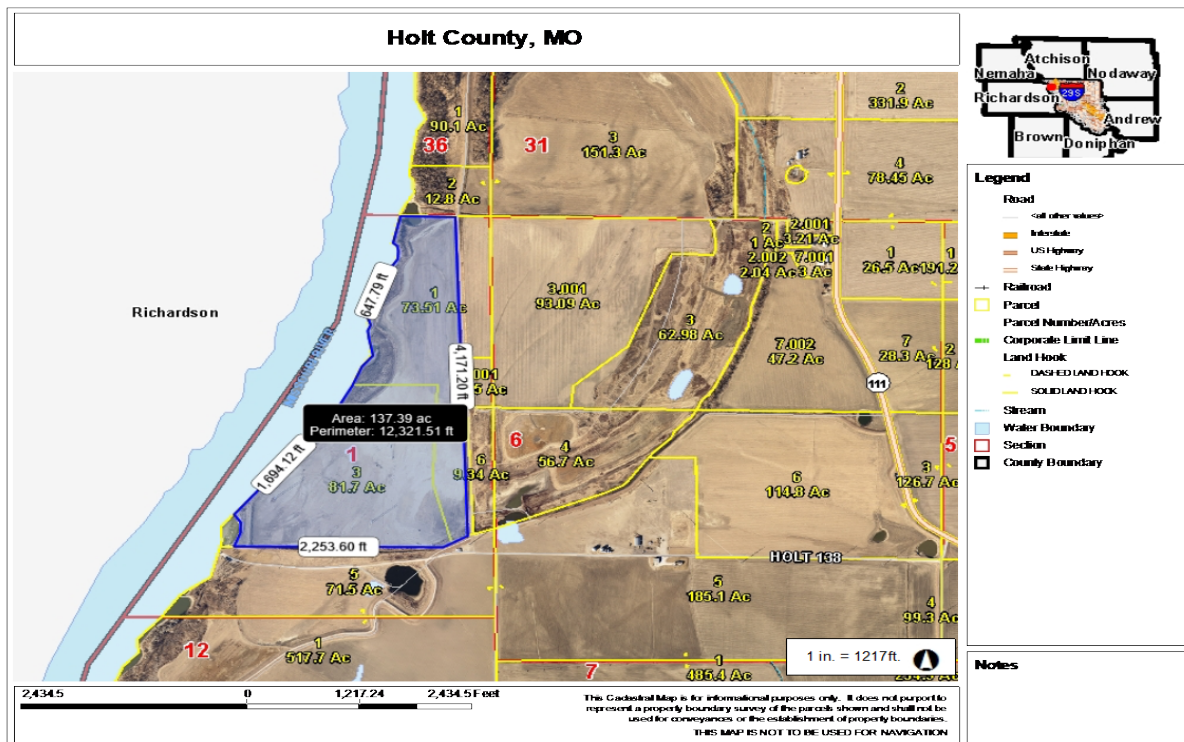
137.30 Acres, Holt County, MO

Driving Map



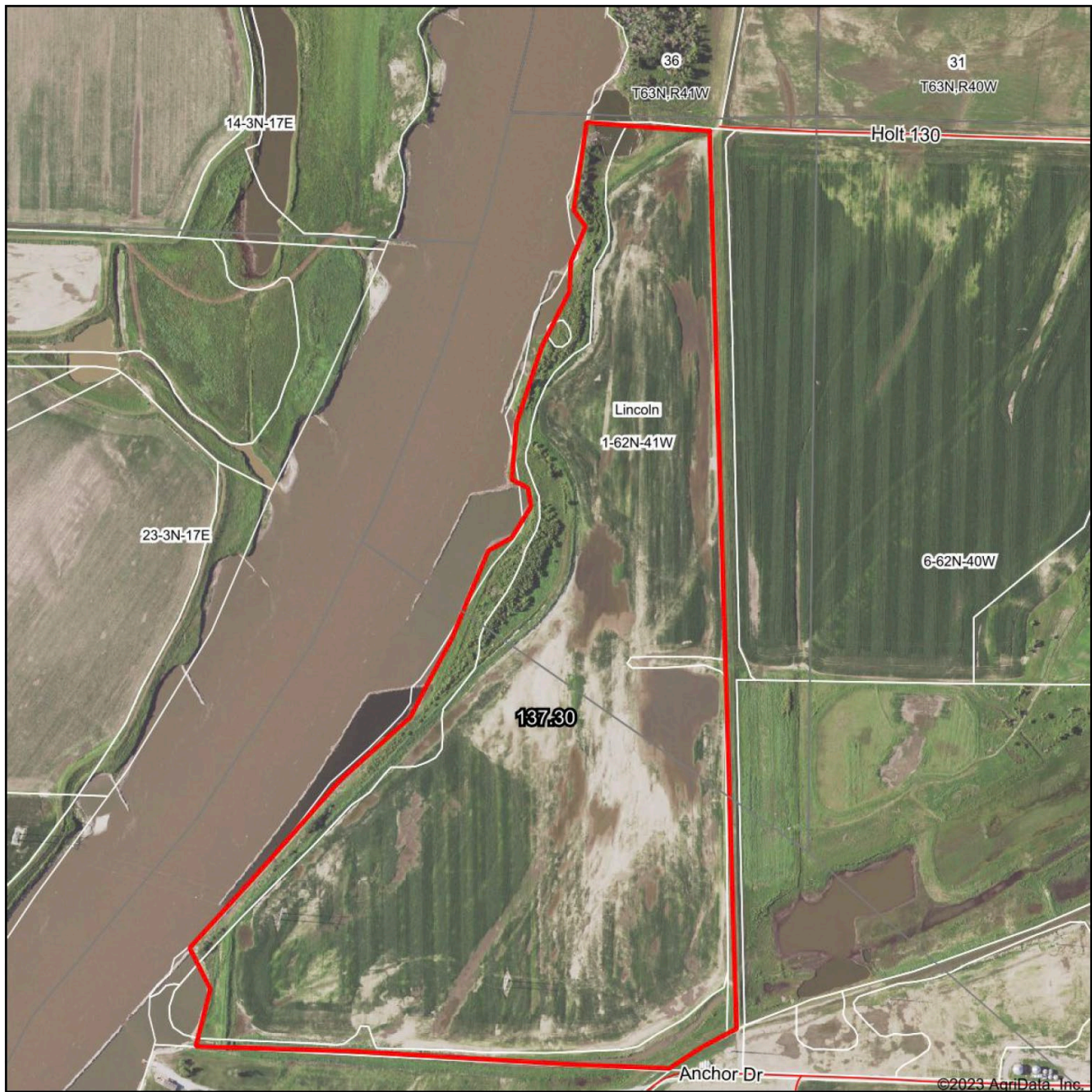
Tax Map

BOUNDARIES ARE APPROXIMATE



137.30 Acres, Holt County, MO

Surety Map



www.BarnesRealty.com
(800) 648-3177

Maps Provided By

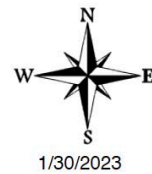


© AgriData, Inc. 2021
Field borders provided by Farm Service Agency as of 5/21/2008

Map Center: 40° 12' 53.33, -95° 28' 10.35

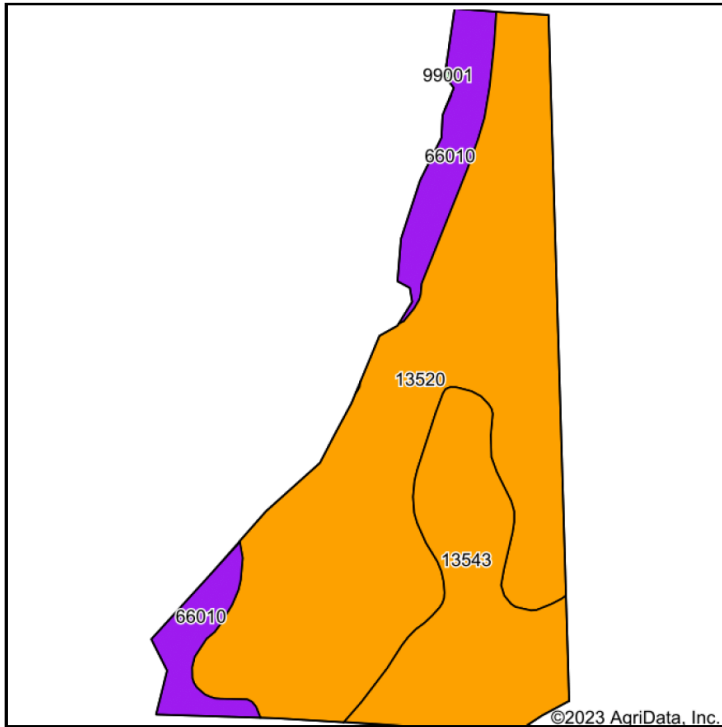
0ft 723ft 1447ft

1-62N-41W
Holt County
Missouri

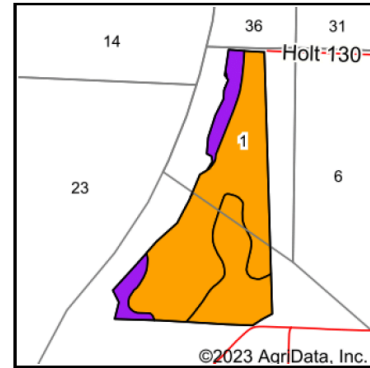


137.30 Acres, Holt County, MO

Soil Map



Soils data provided by USDA and NRCS.



State: **Missouri**
 County: **Holt**
 Location: **1-62N-41W**
 Township: **Lincoln**
 Acres: **137.3**
 Date: **1/30/2023**



Maps Provided By



© AgriData, Inc. 2021

surety
 CUSTOMIZED ONLINE MAPPING

www.AgriDataInc.com



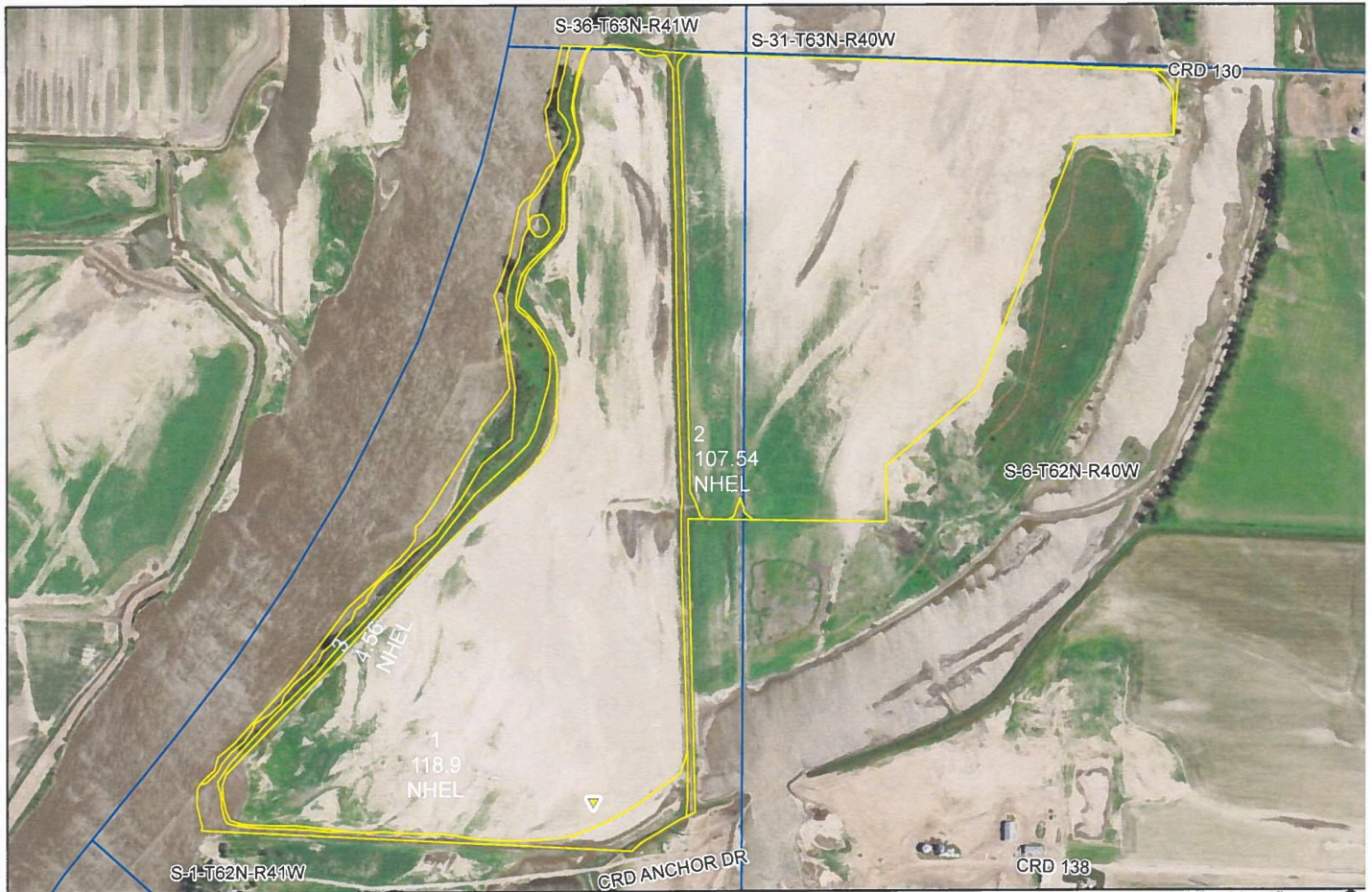
Area Symbol: MO087, Soil Area Version: 25										
Code	Soil Description	Acres	Percent of field	Non-Irr Class Legend	Non-Irr Class *c	*n NCCPI Overall	*n NCCPI Corn	*n NCCPI Small Grains	*n NCCPI Soybeans	*n NCCPI Cotton
13520	Grable very fine sandy loam, 0 to 2 percent slopes, frequently flooded	89.77	65.4%		IIIw	44	43	33	39	8
13543	Leta silty clay, 0 to 2 percent slopes, frequently flooded	31.58	23.0%		IIIw	40	39	28	39	
66010	Sarpy fine sand, 0 to 2 percent slopes, frequently flooded	15.95	11.6%		Vw	9	3	9	1	
Weighted Average					3.23	*n 39	*n 37.4	*n 29.1	*n 34.6	*n 5.2

*n: The aggregation method is "Weighted Average using all components"

*c: Using Capabilities Class Dominant Condition Aggregation Method

Soils data provided by USDA and NRCS.

137.30 Acres, Holt County, MO FSA Aerial Map



- crp
- clu
- plss

Farm 4411
Tract 2669

C=Com-Yel-GR CW=Com-Whe-GR
POP=Com-Pop-GR AMY=Com-Amy-GR
SB=Soybn-COM-GR Milo=Sorgh-Grs-GR
HRW=Wheat-HRW-GR SRW=Wheat-SRW-GR
WXY=Com-Wxy-GR
GLS=Grass- SMO- LS ALF=Alfalfa-FG
H=MIXFG-lgs-FG P=MIXFG-lgs-GZ
All fields non-irrigated
*Unless noted on Map

Holt Co. FSA

Program Year: 2022

Created: 10/5/2021

Flown: 2018-07-24

**All Measurements are
For FSA Programs Only**

1:8,610

Wetland Determination Identifiers

- Restricted Use
- ▼ Limited Restrictions
- Exempt from Conservation Compliance Provisions

Disclaimer: Wetland identifiers do not represent the size, shape or specific determination of the area. Refer to your original determination (CPA-026 and attached maps) for exact wetland boundaries and determinations, or contact NRCS.



137.30 Acres, Holt County, MO

FSA 156EZ

Tract Number : 2669
Description : D2 S1,6-62-40,41
FSA Physical Location : MISSOURI/HOLT
ANSI Physical Location : MISSOURI/HOLT
BIA Unit Range Number :
HEL Status : NHEL: No agricultural commodity planted on undetermined fields
Wetland Status : Tract does not contain a wetland
WL Violations : None
Owners :
Other Producers : None
Recon ID : None

Tract Land Data

Farm Land	Cropland	DCP Cropland	WBP	WRP	CRP	GRP	Sugarcane
256.18	231.00	231.00	0.00	0.00	0.00	0.00	0.00
State Conservation	Other Conservation	Effective DCP Cropland	Double Cropped	MPL	EWP	DCP Ag. Rel Activity	Broken From Native Sod
0.00	0.00	231.00	0.00	0.00	0.00	0.00	0.00

DCP Crop Data

Crop Name	Base Acres	CCC-505 CRP Reduction Acres	PLC Yield
Wheat	29.60	0.00	32
Corn	201.40	0.00	116
TOTAL	231.00	0.00	

NOTES

FSA 578

2669	1A	SOYBN	COM	GR	N	C	N	I	A	35.00	Yes	N	6/3/2021	01								
Producer	1B	SOYBN	COM	GR	Share 100.00	FSA Physical Location Holt, Missouri						NAP Unit 2119	Signature Date									
					N	C	N	I	P	A	83.90	Yes	N	01								
Produc.	2	SOYBN	COM	GR	Share 100.00	FSA Physical Location Holt, Missouri						NAP Unit 2119	Signature Date									
					I	C	N	I	A	107.54	Yes	N	6/3/2021	01								
Producer	3	GRASS	SMO	LS	Share 100.00	FSA Physical Location Holt, Missouri						NAP Unit 2119	Signature Date									
					N	C	N	I	V	A	4.56	Yes	N	01								
Producer					Share 100.00	FSA Physical Location Holt, Missouri						NAP Unit 2119	Signature Date									
<u>Tract 2669 Summary</u>																						
PP	Cr/Ce	Var/Type	Int Use	Irr Pr	Rpt Unit	Rpt Qty	PP	Cr/Ce	Var/Type	Int Use	Irr Pr	Rpt Unit	Rpt Qty	PP	Cr/Ce	Var/Type	Int Use	Irr Pr	Rpt Unit	Rpt Qty		
01	SOYBN	COM	GR	I	A	107.54	01	SOYBN	COM	GR	N	A	118.90	01	GRASS	SMO	LS	N	A	4.56		
Photo Number/Legal Description: D2 S1,6-62-40,41																						
Cropland: 231.00						Reported on Cropland: 231.00						Difference: 0.00						Reported on Non-Cropland: 0.00				