



## Land Sales Specialists

*Setting the trend for how Real Estate is sold in the Midwest.*

[www.BarnesRealty.com](http://www.BarnesRealty.com)

18156 Hwy 59  
Mound City, MO 64470  
(660) 442-3177

1711 Oregon  
Hiawatha, KS 66434  
(785) 742-4580

1708 Prairie View Rd, Suite B  
Platte City, MO 64079  
(816) 219-3010

### ***146.21 Acres +/- Andrew County, MO***

*This upland Tract has great cash rent income and will be sold soon by the square foot! So, it's a great place to invest for return and appreciation!*

#### **LOCATION:**

Property is located on the East side of Interstate I-29/Highway 59, approx. 1 mile South of Exit 53 on Interstate I-29.

#### **PRICE:**

\$18,900.00/Acre or \$2,763,369.00 Total

#### **IMPROVEMENTS:**

Tract is unimproved

#### **FSA INFORMATION:**

Acres have not previously been certified.

#### **TAXES/TAXABLE ACRES:**

2022 taxes were \$403.70 on 146.21 acres.

#### **RENTAL STATUS:**

Inquire with Agent

#### **LISTING AGENT:**

Jamie Barnes  
(660) 851-1125 or [jamie@barnesrealty.com](mailto:jamie@barnesrealty.com)



#### **BROKER PARTICIPATION:**

Barnes Realty Company, as listing Broker, will gladly and fully cooperate with most licensed Real Estate Brokers to obtain a sale of the property on terms satisfactory to the current Owners. Brokers should call our office for details of our Co-Brokerage Policy.

*Setting the trend for how Real Estate is sold in the Midwest.*

This information is thought to be accurate; however, it is subject to verification and no liability for error and omissions is assumed. Barnes Realty has made every effort to present accurate information on the property presented. Most of the information comes from outside sources: County/Government/Seller and human error can occur. It's the Buyer's responsibility to satisfy himself with the information presented and to determine the information to be true and accurate and the property to be suited for his intended use. The listing may be withdrawn with or without approval. The Seller further reserves the right to reject any and all offers.

All inquiries, inspections, appointments, and offers must be sent through:

**RICK BARNES, BROKER, BARNES REALTY COMPANY, 18156 HWY 59, MOUND CITY, MO 64470 PHONE NUMBER: 1-660-442-3177.**

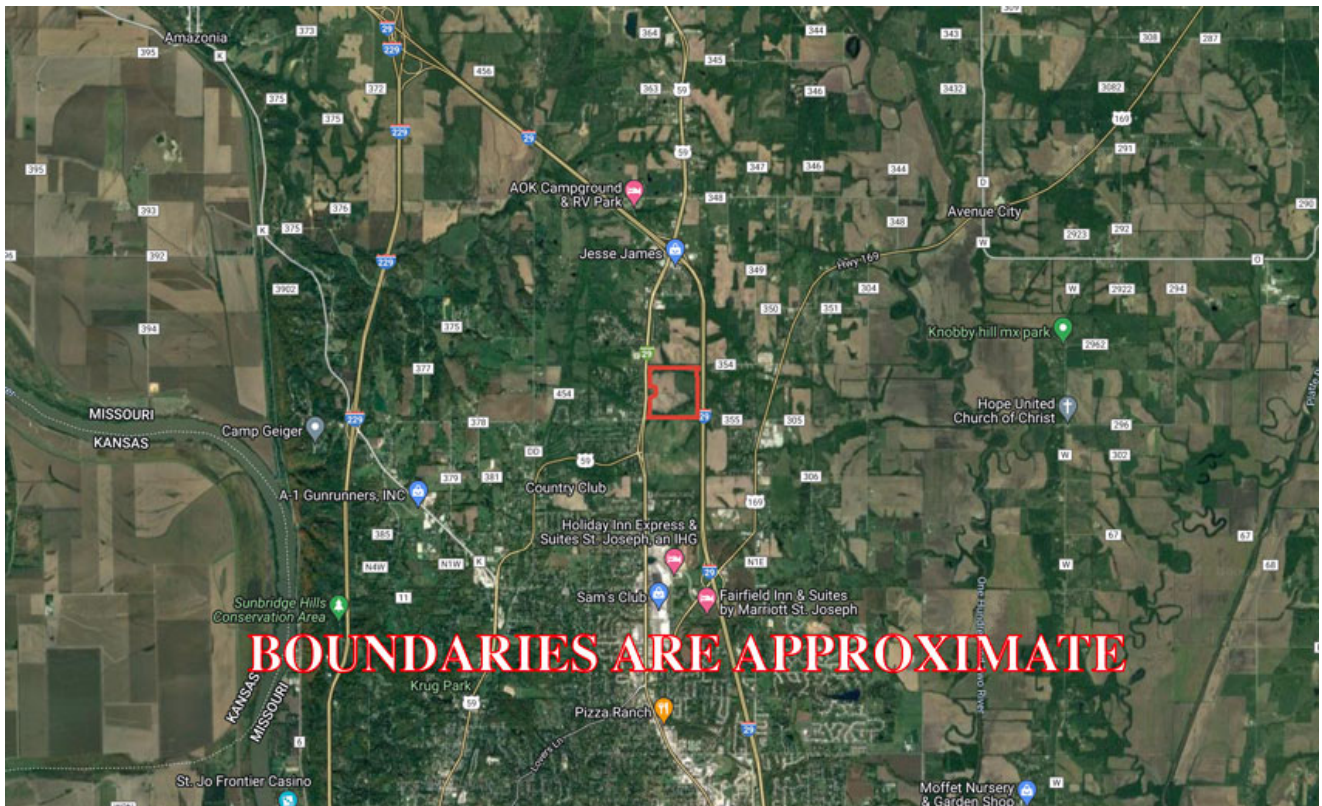
*145 Acres +/- Andrew County, MO  
Aerial Photos*



*145 Acres +/- Andrew County, MO  
Google Aerial Map*

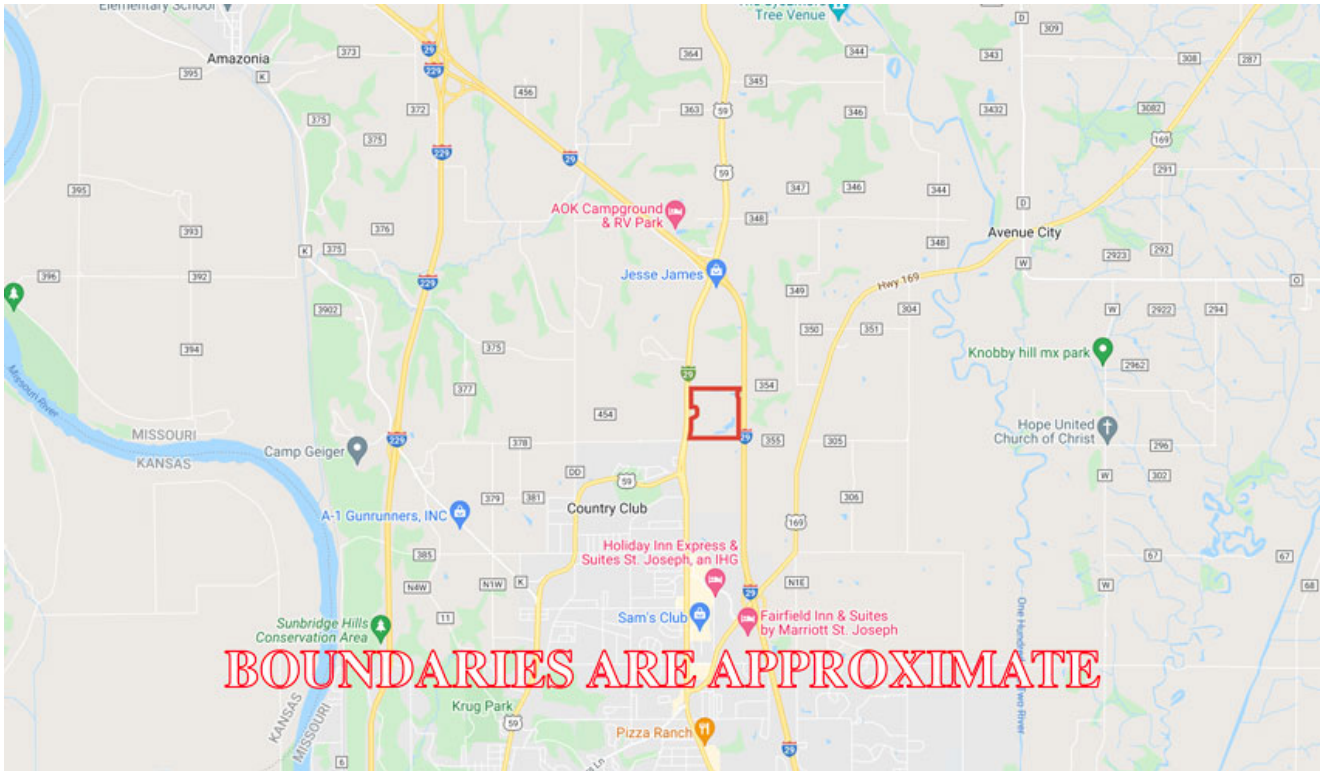


*General Location Map*

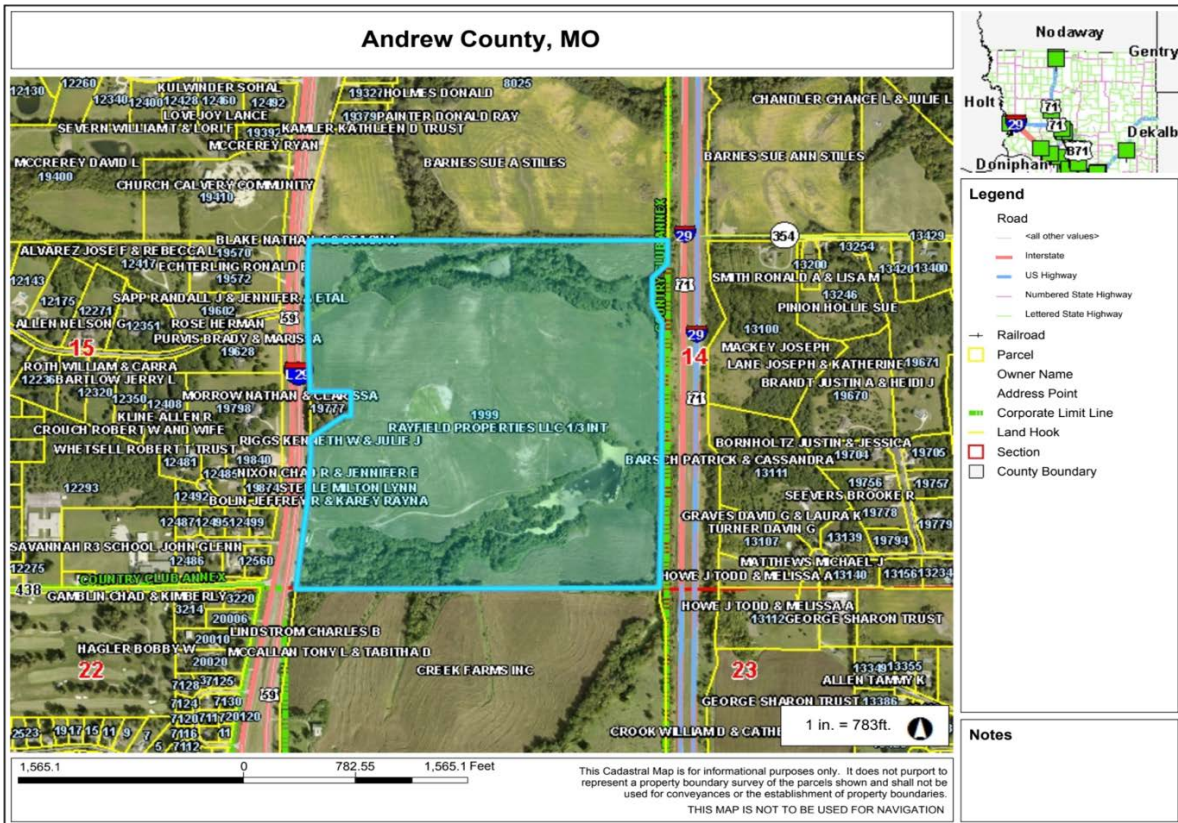


PHOTOS PROVIDED BY: RICK BARNES, BROKER, BARNES REALTY COMPANY, 18156 HWY 59, MOUND CITY, MO 64470 PHONE NUMBER: 1-660-442-3177.

# 145 Acres +/- Andrew County, MO Driving Map

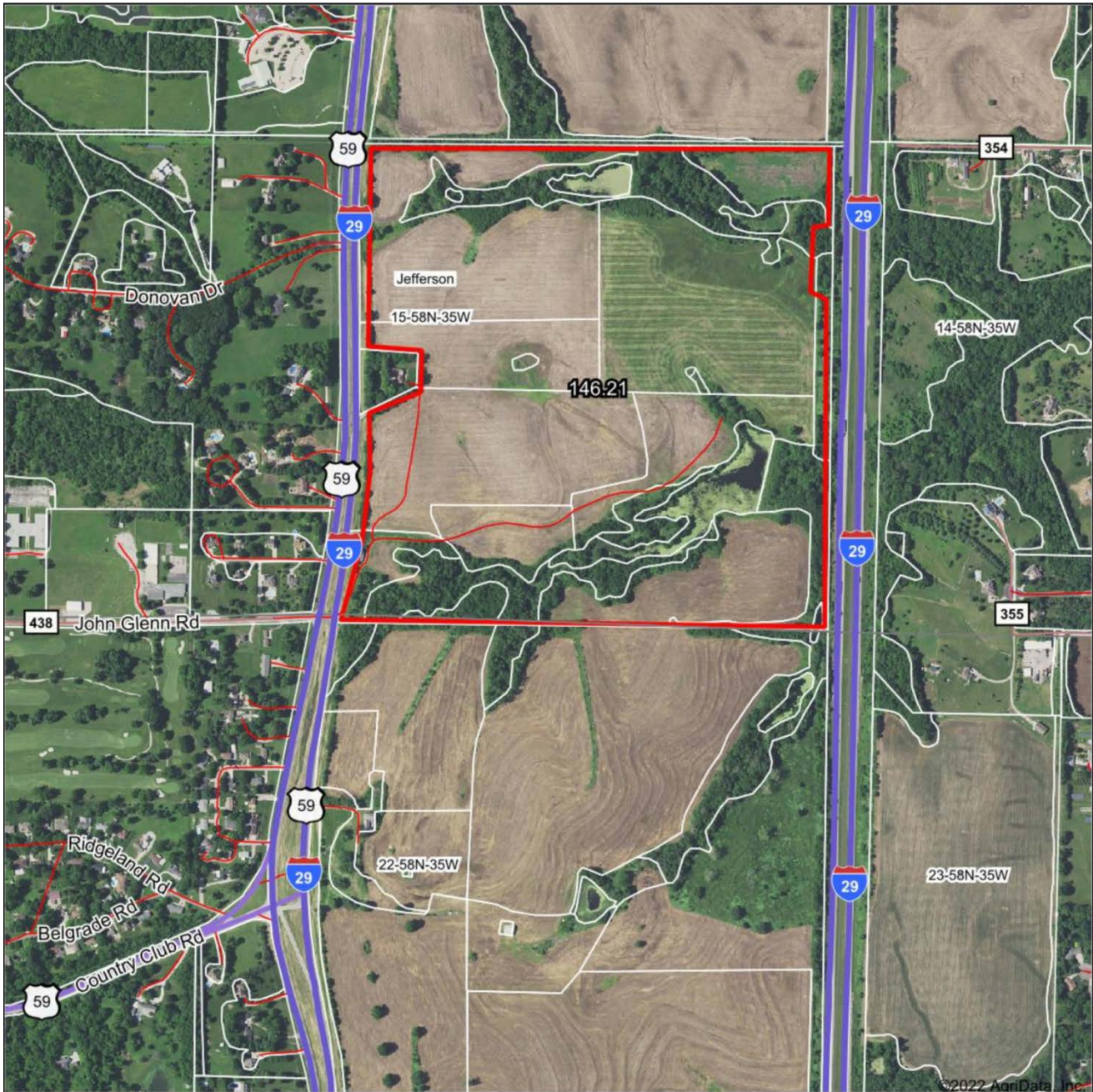


## Tax Map



PHOTOS PROVIDED BY: RICK BARNES, BROKER, BARNES REALTY COMPANY, 18156 HWY 59, MOUND CITY, MO 64470 PHONE NUMBER: 1-660-442-3177.

# 145 Acres +/- Andrew County, MO Surety Map



www.BarnesRealty.com  
(800) 648-3177

Maps Provided By:



© AgriData, Inc. 2021 www.AgriDataInc.com

Field borders provided by Farm Service Agency as of 5/21/2008.

Map Center: 39° 50' 13.52, -94° 48' 40.07

0ft 847ft 1695ft

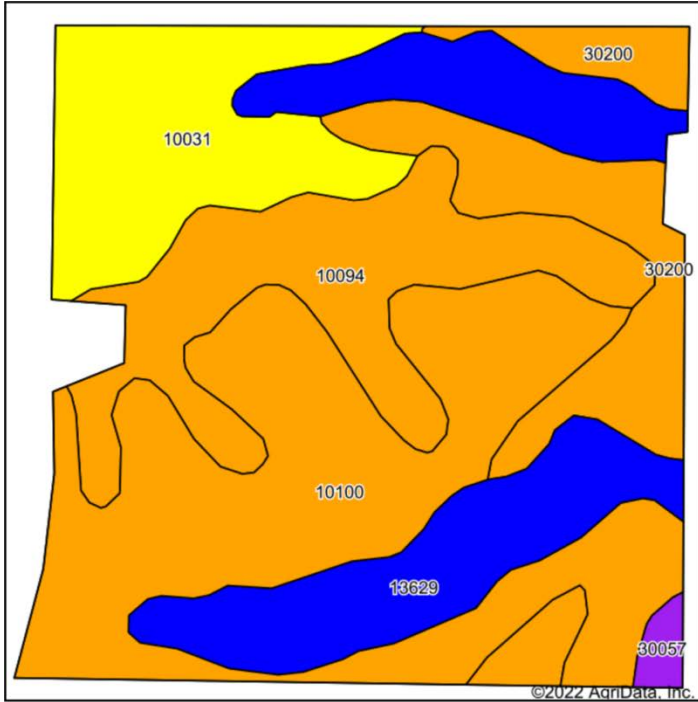
15-58N-35W  
Andrew County  
Missouri



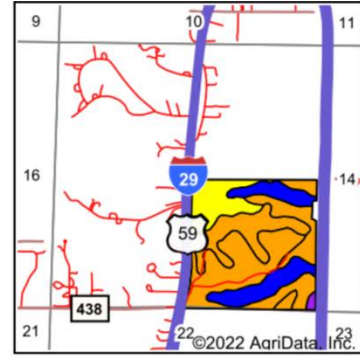
4/1/2022

# 145 Acres +/- Andrew County, MO

## Soil Map



Soils data provided by USDA and NRCS.



State: **Missouri**  
 County: **Andrew**  
 Location: **15-58N-35W**  
 Township: **Jefferson**  
 Acres: **146.21**  
 Date: **4/1/2022**



Maps Provided By



Area Symbol: MO003, Soil Area Version: 23

| Code                    | Soil Description   | Acres | Percent of field | Non-Irr Class Legend | Non-Irr Class *c | *n NCCPI Overall | *n NCCPI Corn  | *n NCCPI Small Grains | *n NCCPI Soybeans |                |
|-------------------------|--|-------|------------------|----------------------|------------------|------------------|----------------|-----------------------|-------------------|----------------|
| 10100                   | Marshall silty clay loam, 9 to 14 percent slopes, eroded     | 50.71 | 34.7%            |                      | IIle             | 86               | 86             | 63                    | 65                |                |
| 13629                   | Colo silt loam, 1 to 4 percent slopes, occasionally flooded  | 27.49 | 18.8%            |                      | IIw              | 81               | 72             | 38                    | 81                |                |
| 10094                   | Marshall silt loam, 5 to 9 percent slopes, eroded            | 26.97 | 18.4%            |                      | IIIe             | 85               | 85             | 71                    | 63                |                |
| 10031                   | Higginsville silty clay loam, 9 to 14 percent slopes, eroded | 21.55 | 14.7%            |                      | IVe              | 67               | 67             | 59                    | 59                |                |
| 30200                   | Shelby loam, 9 to 14 percent slopes                          | 18.24 | 12.5%            |                      | IIIe             | 74               | 74             | 62                    | 62                |                |
| 30057                   | Gara loam, 14 to 18 percent slopes                           | 1.25  | 0.9%             |                      | VIe              | 68               | 68             | 57                    | 53                |                |
| <b>Weighted Average</b> |  |       |                  |                      |                  | <b>2.99</b>      | <b>*n 80.4</b> | <b>*n 78.7</b>        | <b>*n 59</b>      | <b>*n 66.3</b> |

\*n: The aggregation method is "Weighted Average using all components"

\*c: Using Capabilities Class Dominant Condition Aggregation Method

Soils data provided by USDA and NRCS.