



Land Sales Specialists

Setting the trend for how Real Estate is sold in the Midwest.

www.BarnesRealty.com

18156 Hwy 59
Mound City, MO 64470
(660) 442-3177

1711 Oregon
Hiawatha, KS 66434
(785) 742-4580

1708 Prairie View Rd, Suite B
Platte City, MO 64079
(816) 219-3010

2.32 Acres, Atchison County, MO

Are you looking for that Perfect Getaway? With A Cabin, UTV/Hiking Trails, a shooting range, lots of trees and good easy access off I-29 Via exit 99, this small, affordable tract is easy to maintain and enjoy. Since it's located halfway between Kansas City and Omaha, it may just have it all! Come take a look or See the Drone Video on our website while this is still available.

LOCATION:

Right off of Exit 99 on Interstate 29, approximately 2 miles North of Corning, Missouri.

PRICE:

~~\$165,000.00 Total~~

PRICE REDUCED: \$159,999.00

IMPROVEMENTS:

The county road has been improved.
This tract has a small cabin and shooting range.

TAXES/TAXABLE ACRES:

2023 Taxes were \$3.68 on 2.05 Taxable Acres

LISTING AGENT:

Jamie Barnes
(660) 851-1125 or Jamie@barnesrealty.com



BROKER PARTICIPATION:

Barnes Realty Company, as listing Broker, will gladly and fully cooperate with most licensed Real Estate Brokers to obtain a sale of the property on terms satisfactory to the current Owners. Brokers should call our office for details of our Co-Brokerage Policy.

Setting the trend for how Real Estate is sold in the Midwest.

This information is thought to be accurate; however, it is subject to verification and no liability for error and omissions is assumed. Barnes Realty has made every effort to present accurate information on the property presented. Most of the information comes from outside sources: County/Government/Seller and human error can occur. It's the Buyer's responsibility to satisfy himself with the information presented and to determine the information to be true and accurate and the property to be suited for his intended use. The listing may be withdrawn with or without approval. The Seller further reserves the right to reject any and all offers.

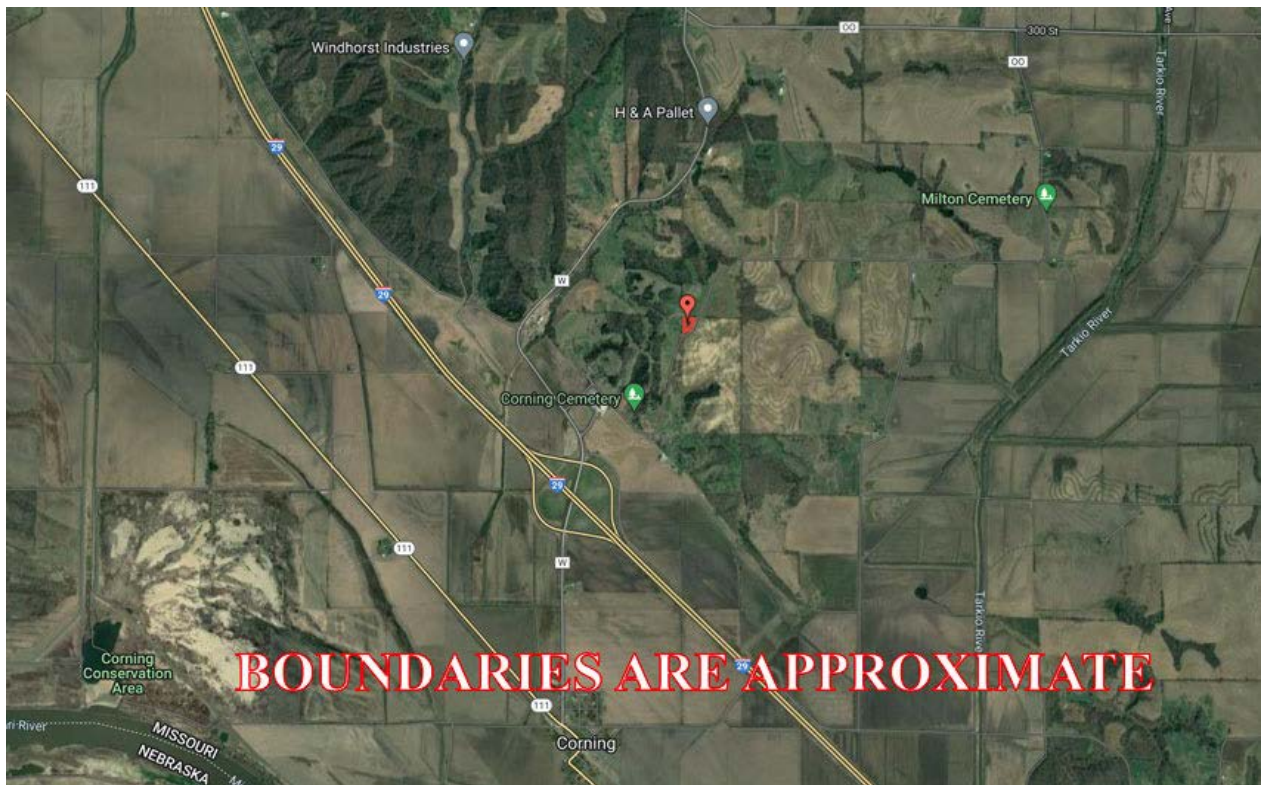
All inquiries, inspections, appointments, and offers must be sent through:

RICK BARNES, BROKER, BARNES REALTY COMPANY, 18156 HWY 59, MOUND CITY, MO 64470 PHONE NUMBER: 1-660-442-3177.

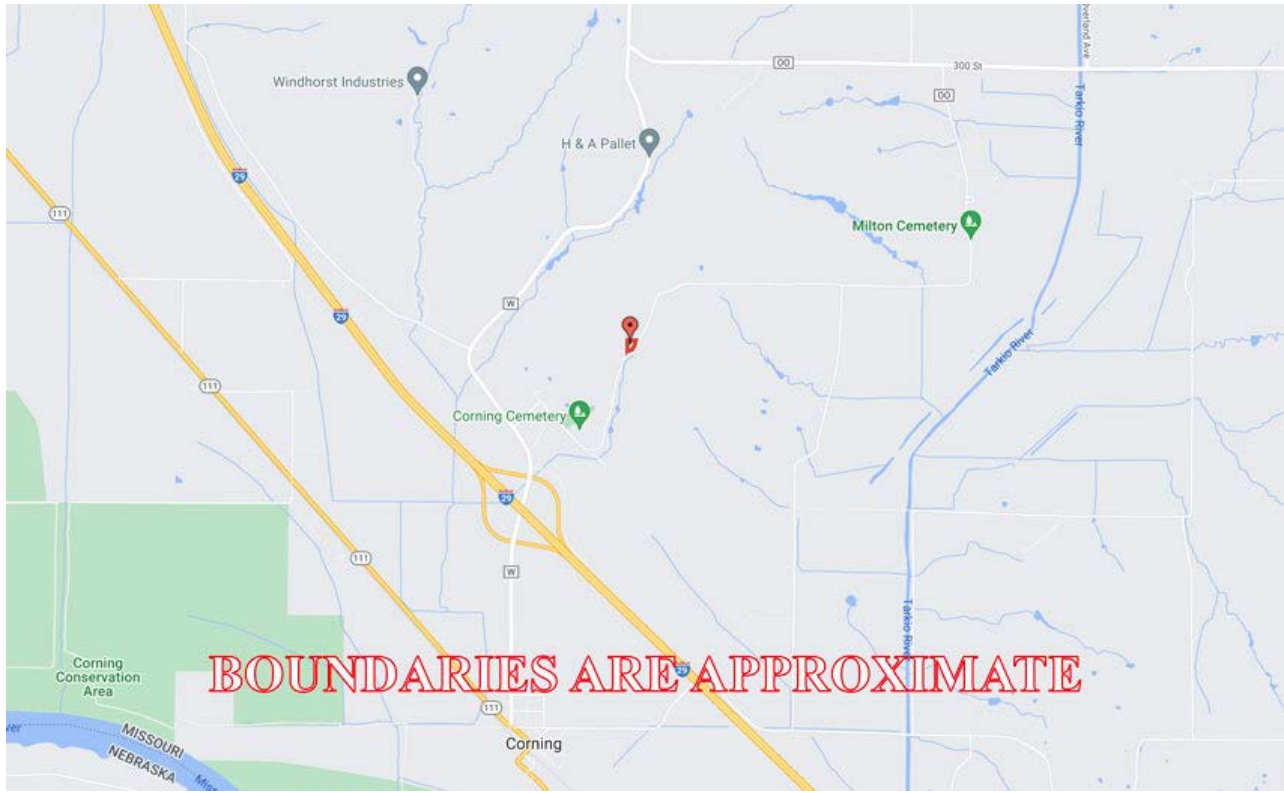
2.32 Acres, Atchison County, MO
Google Aerial Map



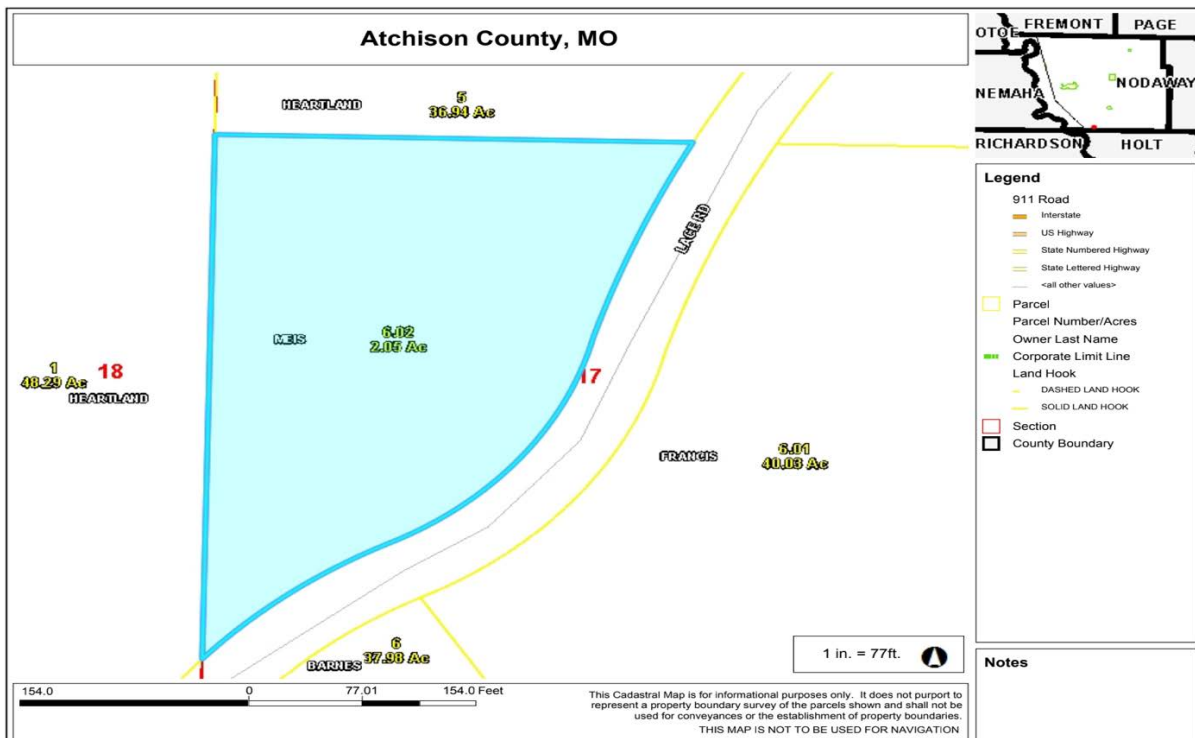
General Location Map



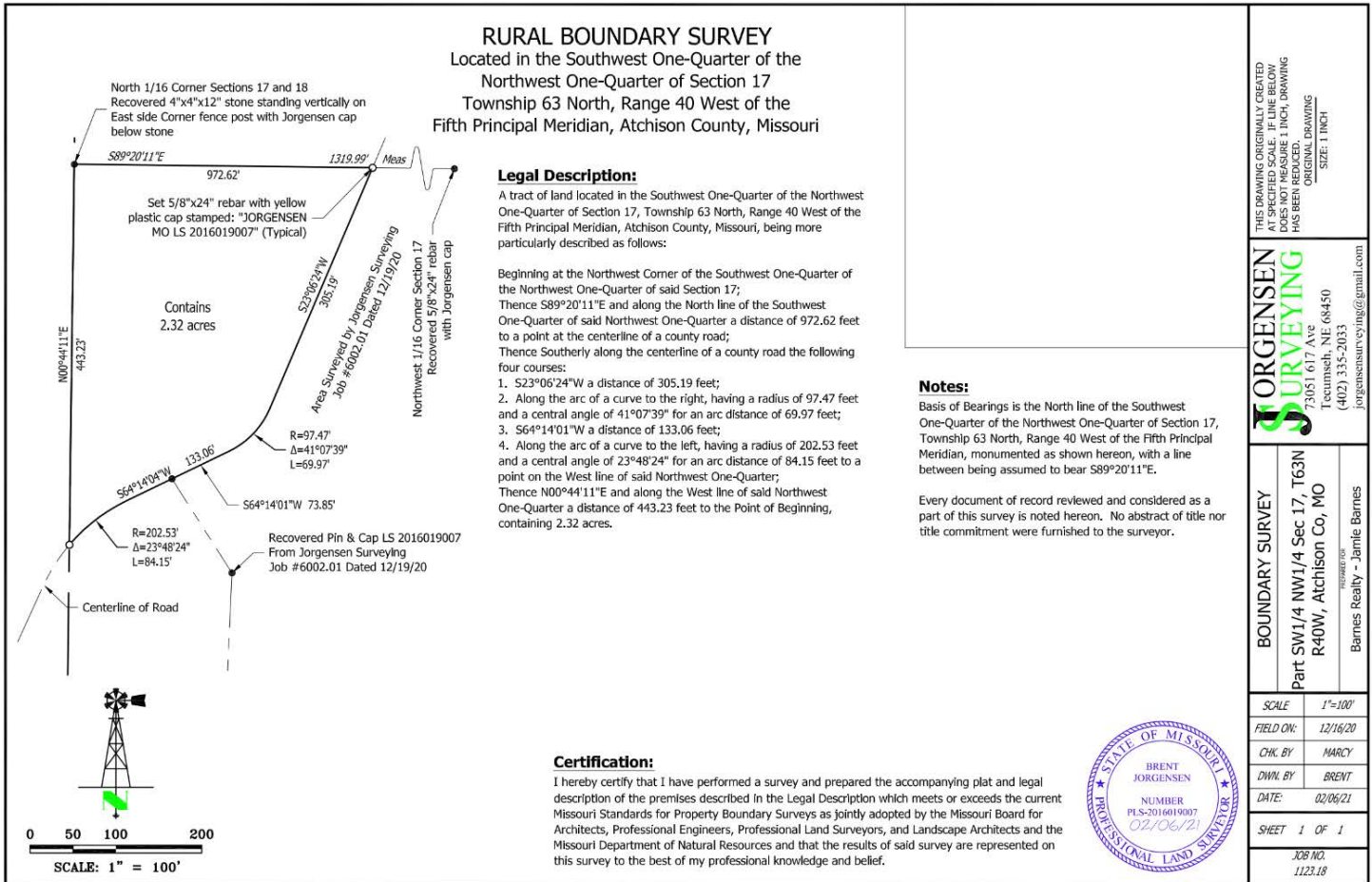
2.32 Acres, Atchison County, MO Driving Map



Tax Map



2.32 Acres, Atchison County, MO 2020 Survey



Cabin Photos



PHOTOS PROVIDED BY: RICK BARNES, BROKER, BARNES REALTY COMPANY, 18156 HWY 59, MOUND CITY, MO 64470 PHONE NUMBER: 1-660-442-3177.

*2.32 Acres, Atchison County, MO
Cabin Photos*



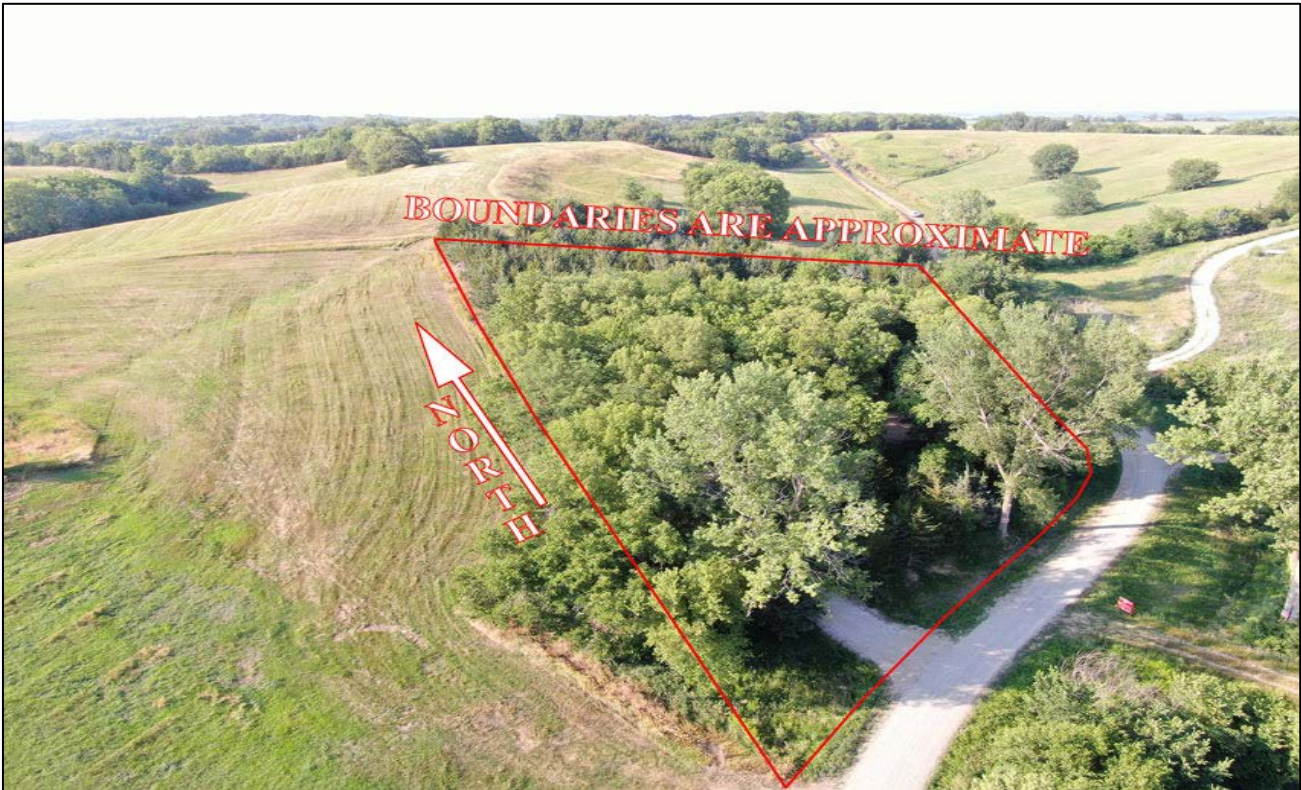
*2.32 Acres, Atchison County, MO
Cabin Photos*



*2.32 Acres, Atchison County, MO
Cabin Photos*



2.32 Acres, Atchison County, MO
Aerial Photos



2.32 Acres, Atchison County, MO
Aerial Photos



2.32 Acres, Atchison County, MO
Aerial Photos

