



Farmland Sales Specialists

Setting the trend for how Real Estate is sold in the Midwest.
www.BarnesRealty.com

18156 Hwy 59
Mound City, MO 64470
(660) 442-3177

1711 Oregon
Hiawatha, KS 66434
(785) 742-4580

1708 Prairie View Rd, Suite B
Platte City, MO 64079
(816) 219-3010

1,047 Taxable Acres, Nodaway County, MO

Large contiguous row crop farms are very hard to come by right now, but here is an opportunity to buy a group of farms that together make up a large, productive upland farming operation. There are a total of five separate parcels of land located in northeast Nodaway County, Mo. All are mostly row crop and hunting land (all the tracts have hunting leases in place that more than pay for the real estate taxes). All are cash rented with the payment of the rent due in two installments, 10% of the year's cash rent in advance after the previous crops have been removed and the remaining 90% of the cash due March 1, before planting time. This makes the leases more secure because the landlord will have plenty of time to find a new renter if one of the current renters doesn't come up with the rent money before farming season for one reason or another. The locations of the individual tracts offer good diversification across a relatively small geographic area. The farms are all in good condition and will make someone a good investment over the years. In addition, there are good hunting opportunities each individual tract. Most of the conservation work has been done and this investment will produce a good rate of return year in and year out. There are no wind leases on this property currently, but the present administration has plans to greatly increase the wind generation capacity across the country and there are several wind farms already in the vicinity of most of these farms. I would expect most of this property to be soon leased to wind generator companies in the relatively near future.

PRICE:

\$7,150.00/Taxable Acre or \$7,490,769.00 Total

This combination of farms offers lots of diversity and protection from bad weather events like hailstorms, tornados, drought, and big rains due to scattered locations of the tracts. Some major weather problem could damage crops on one of the farms, but it's not likely to get them all.

FSA INFORMATION:

There is extensive FSA information on these tracts.
(See attached for details)

IMPROVEMENTS:

The farm is unimproved except for the tile lines, terraces, fences and gates.

MINERAL RIGHTS:

The current owner is not retaining any mineral rights.

TAXES/TAXABLE ACRES:

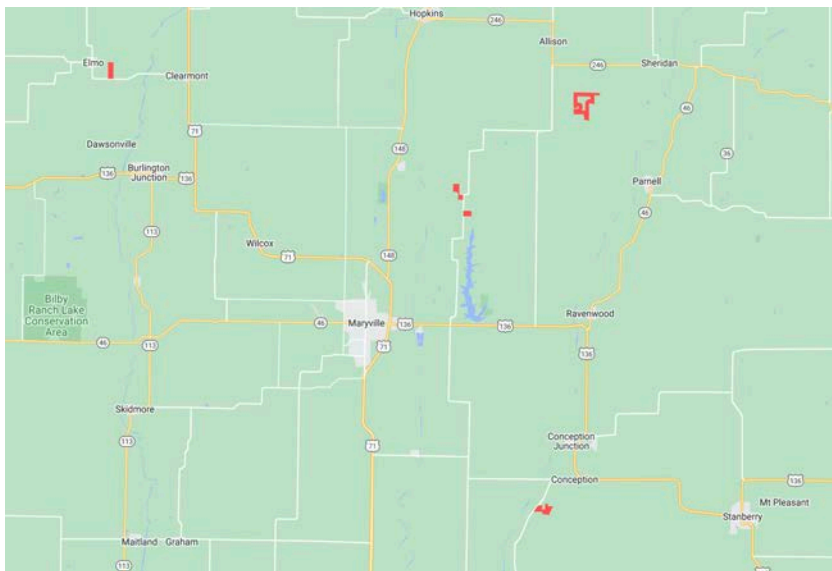
2022 taxes were \$3,287.90 on 1,047.66 taxable acres.

LISTING AGENT:

Rick Barnes
(660) 851-1152 or rickey@barnesrealty.com

BROKER PARTICIPATION:

Barnes Realty Company, as listing Broker, will gladly and fully cooperate with most licensed Real Estate Brokers to obtain a sale of the property on terms satisfactory to the current Owners.



Setting the trend for how Real Estate is sold in the Midwest.

This information is thought to be accurate; however it is subject to verification and no liability for error and omissions is assumed. Barnes Realty has made every effort to present accurate information on the property presented. Most of the information comes from outside sources: County/Government/Seller and human error can occur. It's the Buyer's responsibility to satisfy him self with the information presented and to determine the information to be true and accurate and the property to be suited for his intended use. The listing may be withdrawn with or without approval. The Seller further reserves the right to reject any and all offers.

All inquiries, inspections, appointments, and offers must be sent through:

RICK BARNES, BROKER, BARNES REALTY COMPANY, 18156 HWY 59, MOUND CITY, MO 64470 PHONE NUMBER: 1-660-442-3177.

1,047 Taxable Acres, Nodaway County, MO

Additional Details

LOCATION: Tract 1- 599.3 Taxable Acres (Eckert):

This farm is located about four miles west and south of the town of Sheridan, Mo. It's all upland with several timbered ditches and fencerows that offer wonderful protection and habitat for deer, turkey, and upland birds. It has good gravel road access from all directions. It's mostly row crop but there are over 100 acres of timber scattered along the ditches and fencerows. There are several ponds.

LOCATION: Tract 2- 151.07 Taxable Acres (Luke):

This tract is located about two miles southwest of the town of Conception Junction. It has a good location on the east side of state route AH. It's mostly row crop but it has a nice pasture on the hill starting from the gate onto the highway and running up the hill to the ridgeline. This tract has a beautiful potential homesite on the top of the ridgeline looking westward across the Platte River and there are two ponds and lots of good mature timber. It is a special spot to build a home or a getaway cabin. You could watch deer and turkey from all sides and have a magnificent view to the west across the river bottom.

LOCATION: Tract 3- 120.52 Taxable Acres (Coleville):

This 121-acre farm lies about a half mile north of tract 2 on the west side of Route EE. Forty acres lie alongside the highway and the remaining 90 acres lies north across 195th street and west a half mile. The forty-acre tract has a great location and easy access to public water if someone wanted to build a house on it. It has a pond and some timber and wildlife habitat. The 90-acre tract has one nice draw with a couple of ponds and a nice ridge that runs diagonally from the southeast to the northwest corners of the farm.

LOCATION: Tract 4- 119.39 Taxable Acres (Bain-Petznick):

This tract is located east of the town of Elmo alongside State Route C. It lies a quarter mile along highway C and three quarters of a mile north. It's mostly row crop and there is lots of timber along the western side of the farm that offers excellent deer and turkey hunting.

LOCATION: Tract 5- 57.38 Taxable Acres (Baker):

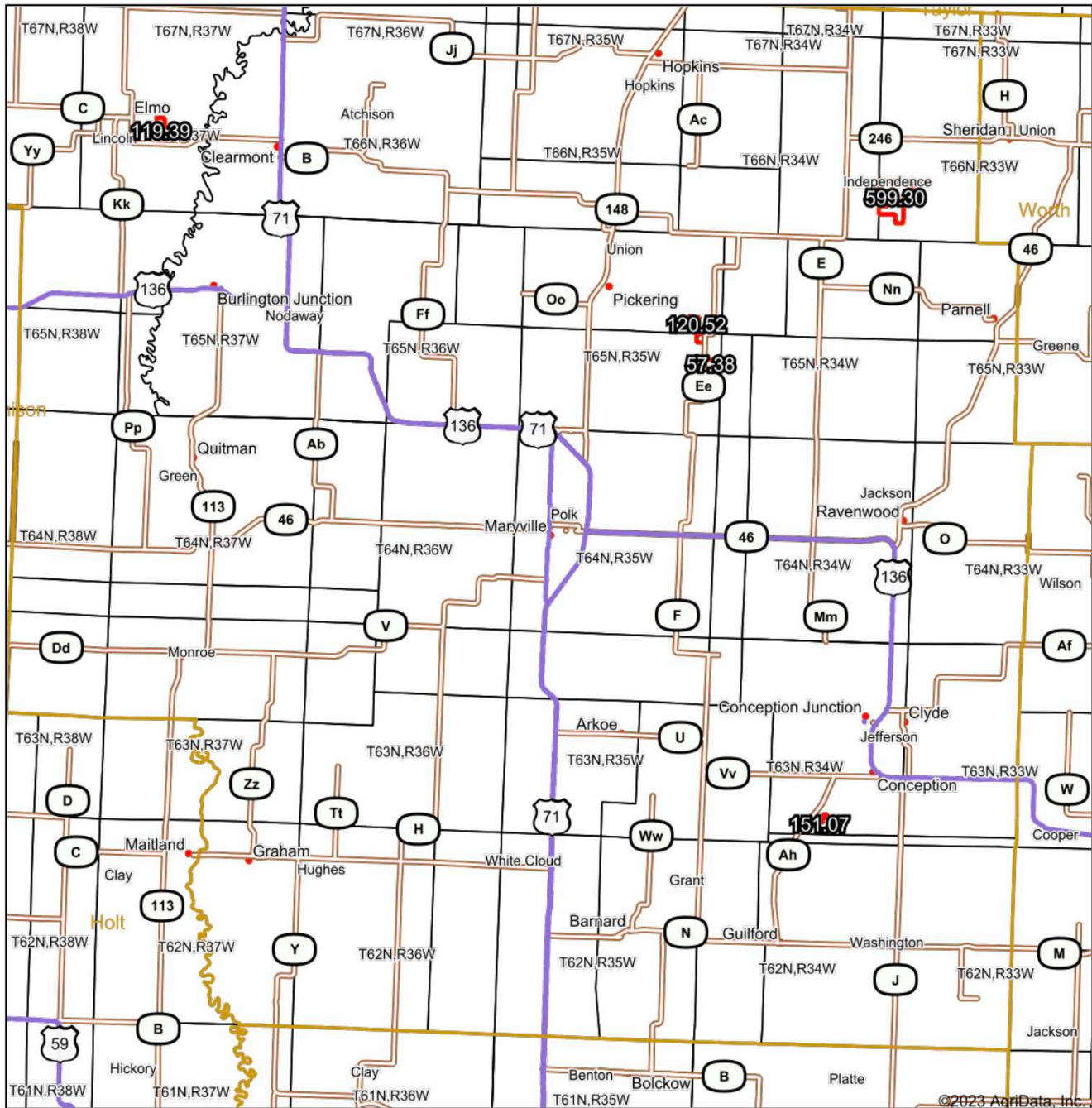
This 57-acre farm is what remains after the conservation commission took the east side for the Lake Mozingo project a few years ago. It is mostly row crop with a large pond on the southeast corner and there is a draw on the northeast corner that is ideal for all manner of wild game. It's got a great location alongside state route EE north and east of Maryville and there are two or three very nice potential homesites if someone wanted to build a home or machine shed.

RENTAL STATUS/CAP RATE:

There is additional diversification on this farm because the tracts are rented to three separate farmers. All have been on the farms for more than two years and all are planning on staying. The total rent income including all the cash rents and all the hunting leases for 2022 totals \$197,000.00 on 819 tillable acres, 22 acres of pasture, and 203 acres of timber. This makes for a capitalization rate of 2.9% currently. Next year, it is expected that rental rates will increase by at least 10% due to the current strong commodity prices and increasing demand for food in the world market. That increase will significantly increase the cap rate in the future. Assuming a 10% increase in total revenue, the cap rate will be 3.2%.

1,047 Taxable Acres, Nodaway County, MO

Driving Overview Map- All Tracts



Maps Provided By:



© AgriData, Inc. 2023

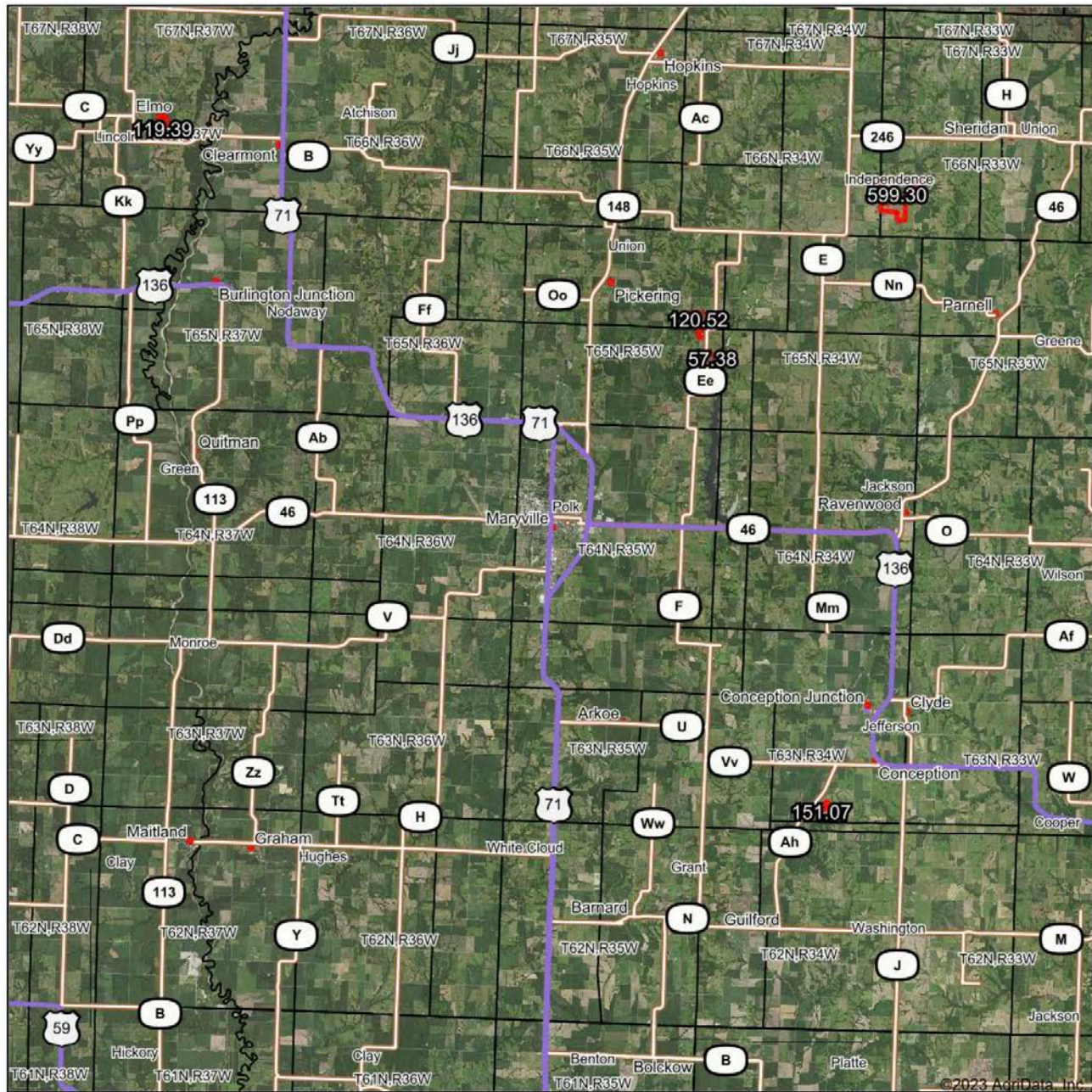
www.AgrIDataInc.com

0mi 4.7mi 9.3mi



3/1/2023

1,047 Taxable Acres, Nodaway County, MO
Surety Map- All Tracts



www.BarnesRealty.com
(800) 648-3177

Maps Provided By:



Field borders provided by Farm Service Agency as of 5/21/2008.

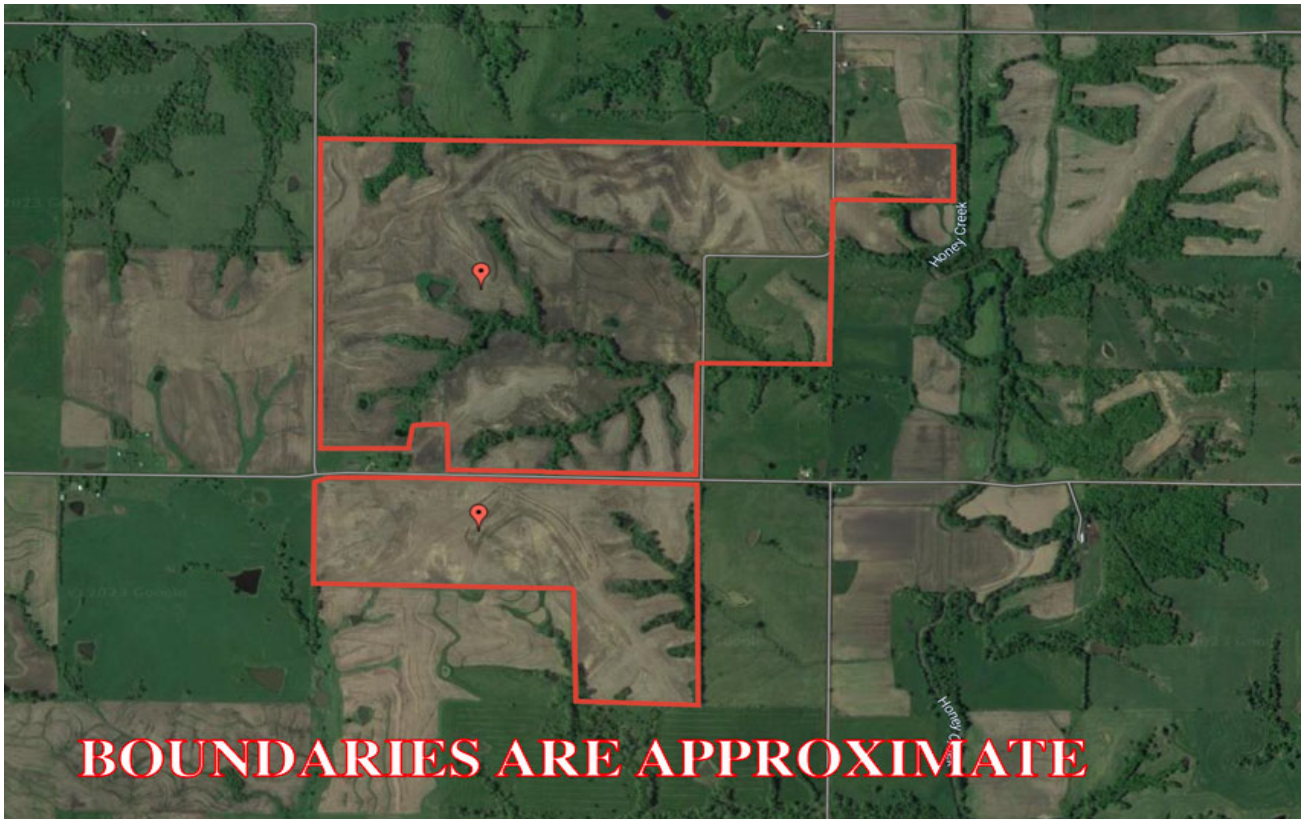
Map Center: 40° 20' 1.44, -94° 52' 18.53

0mi 4.7mi 9.3mi

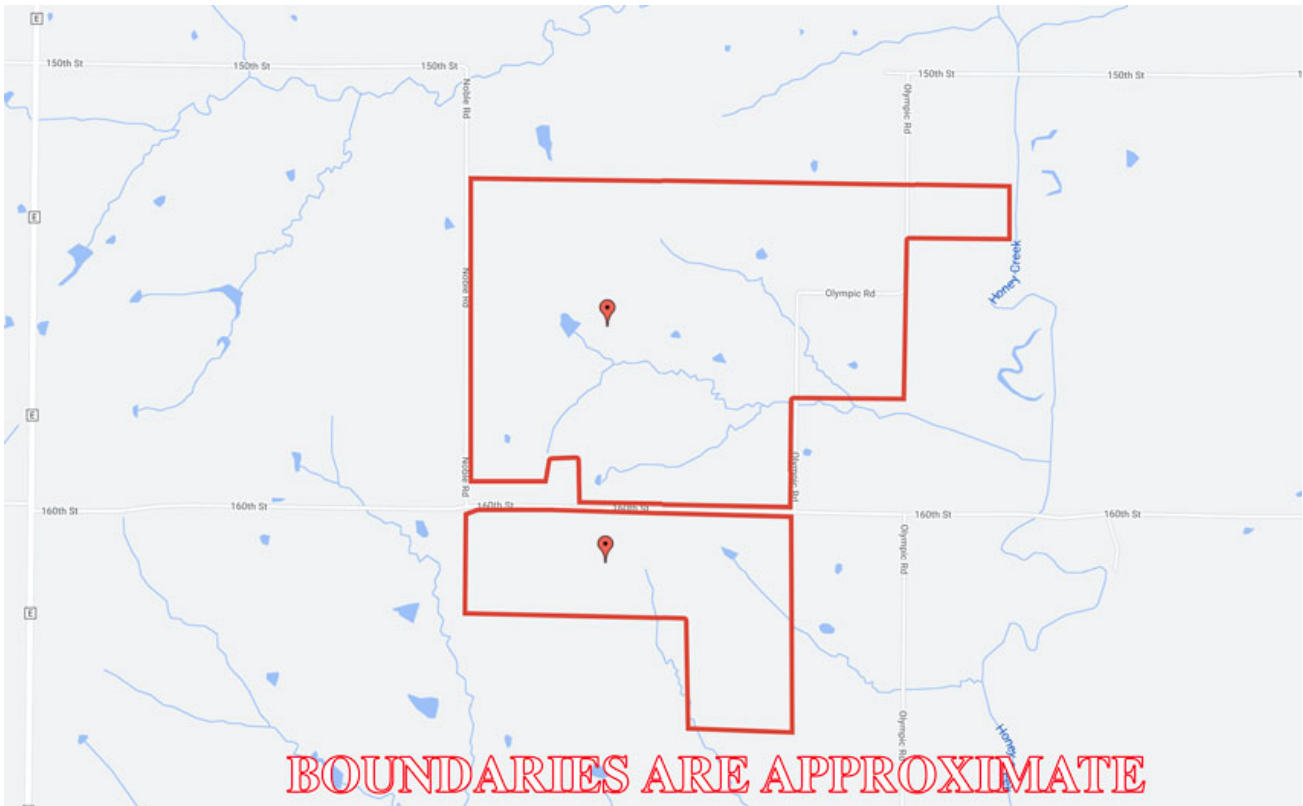
20-64N-35W
Nodaway County
Missouri



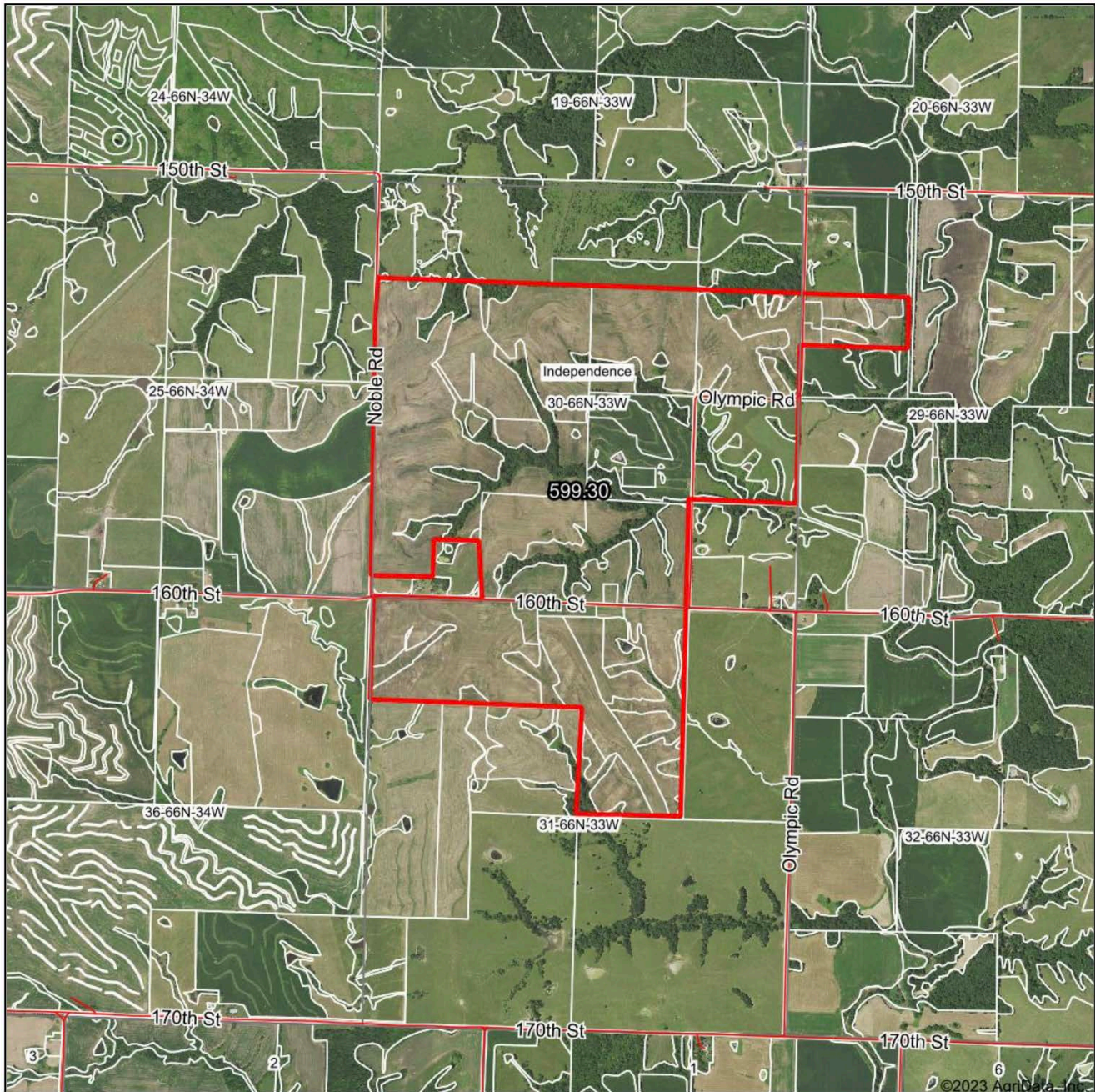
1,047 Taxable Acres, Nodaway County, MO
Google Aerial Map- 599.3 Acre Tract



Driving Map- 599.3 Acre Tract



1,047 Taxable Acres, Nodaway County, MO
Surety Map- 599.3 Acre Tract



www.BarnesRealty.com
(800) 648-3177

Maps Provided By:



© AgriData, Inc. 2023

www.AgridataInc.com

Map Center: 40° 29' 21.58, -94° 40' 50.48

0ft 1939ft 3877ft

30-66N-33W
Nodaway County
Missouri

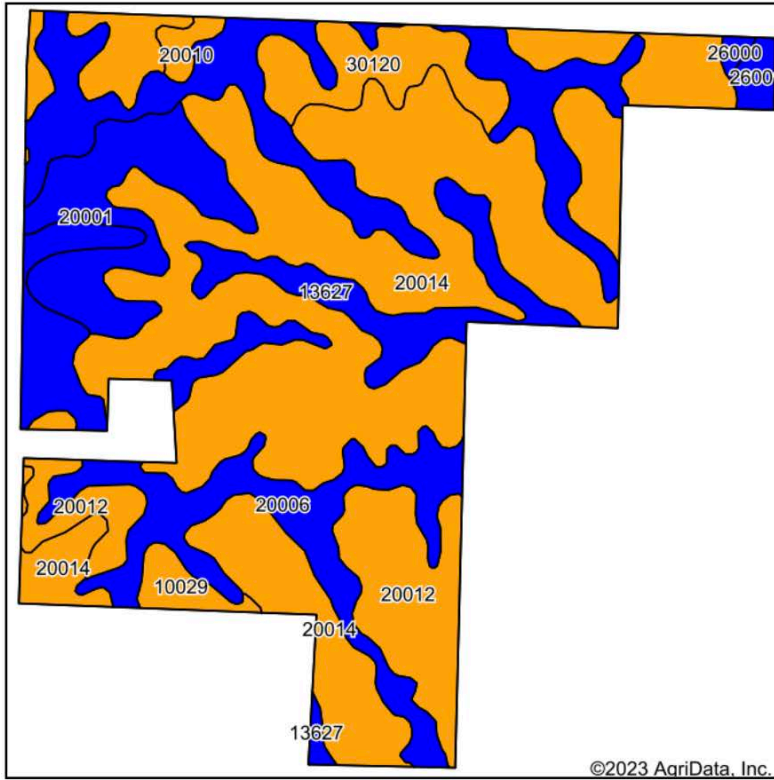


3/1/2023

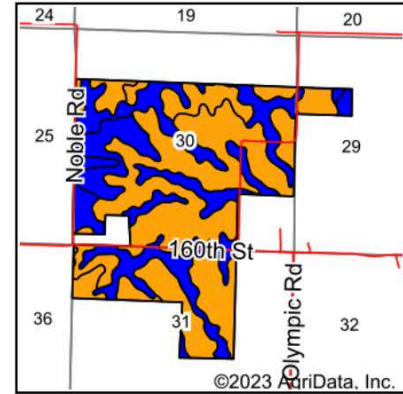
Field borders provided by Farm Service Agency as of 5/21/2008.

1,047 Taxable Acres, Nodaway County, MO

Soil Map- 599.3 Acre Tract



Soils data provided by USDA and NRCS.



State: **Missouri**
 County: **Nodaway**
 Location: **30-66N-33W**
 Township: **Independence**
 Acres: **599.3**
 Date: **3/1/2023**



Maps Provided By:



Area Symbol: MO147, Soil Area Version: 24

Code	Soil Description	Acres	Percent of field	Non-Irr Class Legend	Non-Irr Class *c	*n NCCPI Overall	*n NCCPI Corn	*n NCCPI Small Grains	*n NCCPI Soybeans
20014	Shelby clay loam, dissected till plain, 9 to 14 percent slopes, eroded	283.00	47.2%		IIIe	73	73	56	54
20006	Sharpsburg silty clay loam, 2 to 5 percent slopes	148.24	24.7%		Ile	92	92	77	79
20012	Shelby clay loam, dissected till plain, 5 to 9 percent slopes, eroded	50.99	8.5%		IIIe	76	76	58	56
20001	Macksburg silty clay loam, 2 to 5 percent slopes, eroded	42.52	7.1%		Ile	83	83	74	69
13627	Colo, frequently flooded-Judson silty clay loams, 0 to 5 percent slopes	29.96	5.0%		IIw	77	77	52	67
30120	Lagonda silty clay loam, 5 to 9 percent slopes, eroded	26.76	4.5%		IIIe	69	67	67	58
10029	Higginsville silty clay loam, 5 to 9 percent slopes, eroded	7.48	1.2%		IIIe	70	70	61	63
26001	Dockery-Quiver silt loams, 0 to 2 percent slopes, occasionally flooded	4.52	0.8%		IIw	93	85	49	92
20010	Shelby loam, dissected till plain, 5 to 9 percent slopes	4.22	0.7%		IIIe	83	83	64	63
26000	Bremer silty clay loam, 0 to 2 percent slopes, occasionally flooded	1.61	0.3%		IIw	85	85	69	78
Weighted Average					2.62	*n 78.9	*n 78.8	*n 63	*n 62.8

*n: The aggregation method is "Weighted Average using all components"

*c: Using Capabilities Class Dominant Condition Aggregation Method

Soils data provided by USDA and NRCS.

1,047 Taxable Acres, Nodaway County, MO
FSA Aerial Maps- 599.3 Acre Tract



**All Measurements are
For FSA Programs Only**

Wetland Determination Identifiers

- Restricted Use
- ▼ Limited Restrictions
- Exempt from Conservation Compliance Provisions

Disclaimer: Wetland identifiers do not represent the size, shape or specific determination of the area. Refer to your original determination (CPA-026 and attached maps)

Nodaway Co. FSA

All Crop Non Irrigated Unless Notated
 C=Com Yel GR ; CW=Com Whe GR
 SB=Soybn Com GR
 HRW=Wht HRW GR ; SRW=Wht SRW GR
 H=MIXFG IGS FG ; P=MIXFG IGS GZ
 FG=MIXFG LGM FG
 FTA=Grass FTA GZ ; LS=Grass FTA LS
 AGM=MIXFG AGM FG ; ALF=Alfal FD
 *Unless notated on Map

1 inch equals 180 feet

Program Year: 2023

Created: 9/1/2022

Flown: 2020-06-05

- clu
- crp
- plss

**Farm 7697
Tract 10019**



1,047 Taxable Acres, Nodaway County, MO
FSA Aerial Maps- 599.3 Acre Tract



**All Measurements are
For FSA Programs Only**

Wetland Determination Identifiers

- Restricted Use
- ▼ Limited Restrictions
- Exempt from Conservation Compliance Provisions

Disclaimer: Wetland identifiers do not represent the size, shape or specific determination of the area. Refer to your original determination (CPA-026 and attached maps) for exact wetland boundaries and determinations, or contact NRCS.

Nodaway Co. FSA

All Crop Non Irrigated Unless Notated
 C=Com Yel GR ; CW=Com Whe GR
 SB=Soybn Com GR
 HRW=Wht HRW GR ; SRW=Wht SRW GR
 H=MIXFG IGS FG ; P=MIXFG IGS GZ
 FG=MIXFG LGM FG
 FTA=Grass FTA GZ ; LS=Grass FTA LS
 AGM=MIXFG AGM FG ; ALF=Alfal FD
 *Unless notated on Map

1 inch equals 183 feet



Program Year: 2023

Created: 9/1/2022

Flown: 2020-06-05

- clu
- crp
- plss

**Farm 5040
Tract 2934**

1,047 Taxable Acres, Nodaway County, MO
FSA Aerial Maps- 599.3 Acre Tract



**All Measurements are
For FSA Programs Only**

Wetland Determination Identifiers

- Restricted Use
- ▼ Limited Restrictions
- Exempt from Conservation Compliance Provisions

Disclaimer: Wetland identifiers do not represent the size, shape or specific determination of the area. Refer to your original determination (CPA-026 and attached maps)

Nodaway Co. FSA

All Crop Non Irrigated Unless Notated
C=Com Yel GR ; CW=Com Whe GR
SB=Soybn Com GR
HRW=Wht HRW GR ; SRW=Wht SRW GR
H=MIXFG IGS FG ; P=MIXFG IGS GZ
FG=MIXFG LGM FG
FTA=Grass FTA GZ ; LS=Grass FTA LS
AGM=MIXFG AGM FG ; ALF=Alfal FD
*Unless notated on Map

1 inch equals 545 feet

Program Year: 2023

Created: 9/1/2022

Flown: 2020-06-05

- clu
- crp
- plss

**Farm 7699
Tract 2939**

1,047 Taxable Acres, Nodaway County, MO
FSA Aerial Maps- 599.3 Acre Tract



**All Measurements are
For FSA Programs Only**

Wetland Determination Identifiers

- Restricted Use
- ▼ Limited Restrictions
- Exempt from Conservation Compliance Provisions

Disclaimer: Wetland identifiers do not represent the size, shape or specific determination of the area. Refer to your original determination (CPA-026 and attached maps)

Nodaway Co. FSA

All Crop Non Irrigated Unless Notated
 C=Com Yel GR ; CW=Com Whe GR
 SB=Soybn Com GR
 HRW=Wht HRW GR ; SRW=Wht SRW GR
 H=MIXFG IGS FG ; P=MIXFG IGS GZ
 FG=MIXFG LGM FG
 FTA=Grass FTA GZ ; LS=Grass FTA LS
 AGM=MIXFG AGM FG ; ALF=Alfal FD
 *1 Unless notated on Map

1 inch equals 181 feet

Program Year: 2023

Created: 9/1/2022

Flown: 2020-06-05

- clu
- crp
- plss

**Farm 7699
Tract 10020**

1,047 Taxable Acres, Nodaway County, MO
FSA Aerial Maps- 599.3 Acre Tract



**All Measurements are
For FSA Programs Only**

Wetland Determination Identifiers

- Restricted Use
- ▼ Limited Restrictions
- Exempt from Conservation Compliance Provisions

Disclaimer: Wetland identifiers do not represent the size, shape or specific determination of the area. Refer to your original determination (CPA-026 and attached maps)

Nodaway Co. FSA

All Crop Non Irrigated Unless Notated
 C=Com Yel GR ; CW=Com Whe GR
 SB=Soybn Com GR
 HRW=Wht HRW GR ; SRW=Wht SRW GR
 H=MIXFG IGS FG ; P=MIXFG IGS GZ
 FG=MIXFG LGM FG
 FTA=Grass FTA GZ ; LS=Grass FTA LS
 AGM=MIXFG AGM FG ; ALF=Alfal FD
 *Unless notated on Map

1 inch equals 180 feet

Program Year: 2023

Created: 9/1/2022

Flown: 2020-06-05

- clu
- crp
- plss

**Farm 6735
Tract 9451**

1,047 Taxable Acres, Nodaway County, MO
FSA Aerial Maps- 599.3 Acre Tract



**All Measurements are
For FSA Programs Only**

Wetland Determination Identifiers

- Restricted Use
- ▼ Limited Restrictions
- Exempt from Conservation Compliance Provisions

Disclaimer: Wetland identifiers do not represent the size, shape or specific determination of the area. Refer to your original determination (CPA-026 and attached maps)

Nodaway Co. FSA

All Crop Non Irrigated Unless Notated
C=Com Yel GR ; CW=Com Whe GR
SB=Soybn Com GR
HRW=Wht HRW GR ; SRW=Wht SRW GR
H=MIXFG IGS FG ; P=MIXFG IGS GZ
FG=MIXFG LGM FG
FTA=Grass FTA GZ ; LS=Grass FTA LS
AGM=MIXFG AGM FG ; ALF=Alfal FD
*Unless notated on Map

1 inch equals 184 feet

Program Year: 2023

Created: 9/1/2022

Flown: 2020-06-05

- clu
- crp
- plss

**Farm 6736
Tract 9452**



1,047 Taxable Acres, Nodaway County, MO
FSA Aerial Maps- 599.3 Acre Tract



**All Measurements are
For FSA Programs Only**

Wetland Determination Identifiers

- Restricted Use
- ▼ Limited Restrictions
- Exempt from Conservation Compliance Provisions

Disclaimer: Wetland identifiers do not represent the size, shape or specific determination of the area. Refer to your original determination (CPA-026 and attached maps)

Nodaway Co. FSA

All Crop Non Irrigated Unless Notated
C=Com Yel GR ; CW=Com Whe GR
SB=Soybn Com GR
HRW=Wht HRW GR ; SRW=Wht SRW GR
H=MIXFG IGS FG ; P=MIXFG IGS GZ
FG=MIXFG LGM FG
FTA=Grass FTA GZ ; LS=Grass FTA LS
AGM=MIXFG AGM FG ; ALF=Alfal FD
*Unless notated on Map

1 inch equals 458 feet

Program Year: 2023

Created: 9/1/2022

Flown: 2020-06-05

- clu
- crp
- plss

**Farm 8237
Tract 9129**



1,047 Taxable Acres, Nodaway County, MO
FSA 156 EZ- 599.3 Acre Tract

Missouri
Nodaway

U.S. Department of Agriculture
Farm Service Agency

Abbreviated 156 Farm Record

FARM: 7697

Prepared: 11/25/22 10:07 AM

Crop Year: 2023

Page: 1 of 2

Report ID: FSA-156EZ

DISCLAIMER: This is data extracted from the web farm database. Because of potential messaging failures in MIDAS, this data is not guaranteed to be an accurate and complete representation of data contained in the MIDAS system, which is the system of record for Farm Records.

Operator Name	Farm Identifier	Recon Number
		2011 - 95

Farms Associated with Operator:

ARC/PLC G//F Eligibility: Eligible

CRP Contract Number(s): None

Farmland	Cropland	DCP Cropland	WBP	WRP	EWP	CRP Cropland	GRP	Farm Status	Number of Tracts
19.38	15.47	15.47	0.0	0.0	0.0	0.0	0.0	Active	1
State Conservation	Other Conservation	Effective DCP Cropland	Double Cropped	MPL/FWP	Native Sod				
0.0	0.0	15.47	0.0	0.0	0.0				

ARC/PLC						
PLC	ARC-CO	ARC-IC	PLC-Default	ARC-CO-Default	ARC-IC-Default	
NONE	CORN , SOYBN	NONE	NONE	NONE	NONE	

Crop	Base Acreage	PLC Yield	CCC-505 CRP Reduction
CORN	7.3	68	0.00
SOYBEANS	2.0	22	0.00
Total Base Acres:	9.3		

Tract Number: 10019 **Description:** S29-T66-R33

FSA Physical Location : Nodaway, MO

ANSI Physical Location: Nodaway, MO

BIA Range Unit Number:

HEL Status: HEL Determinations not complete

Recon Number

Wetland Status: Tract contains a wetland or farmed wetland

2011 - 94

WL Violations: None

Farmland	Cropland	DCP Cropland	WBP	WRP	EWP	CRP Cropland	GRP
19.38	15.47	15.47	0.0	0.0	0.0	0.0	0.0
State Conservation	Other Conservation	Effective DCP Cropland	Double Cropped	MPL/FWP	Native Sod		
0.0	0.0	15.47	0.0	0.0	0.0		

Crop	Base Acreage	PLC Yield	CCC-505 CRP Reduction
CORN	7.3	68	0.00
SOYBEANS	2.0	22	0.00
Total Base Acres:	9.3		

1,047 Taxable Acres, Nodaway County, MO
FSA 156EZ- 599.3 Acre Tract

Missouri

Nodaway

Report ID: FSA-156EZ

U.S. Department of Agriculture

Farm Service Agency

Abbreviated 156 Farm Record

FARM: 7699

Prepared: 11/25/22 9:11 AM

Crop Year: 2023

Page: 1 of 2

DISCLAIMER: This is data extracted from the web farm database. Because of potential messaging failures in MIDAS, this data is not guaranteed to be an accurate and complete representation of data contained in the MIDAS system, which is the system of record for Farm Records.

Operator Name	Farm Identifier	Recon Number
		2011 - 95

Farms Associated with Operator:

ARC/PLC G//F Eligibility: Eligible

CRP Contract Number(s): None

Farmland	Cropland	DCP Cropland	WBP	WRP	EWP	CRP Cropland	GRP	Farm Status	Number of Tracts
276.1	246.34	246.34	0.0	0.0	0.0	0.0	0.0	Active	2
State Conservation	Other Conservation	Effective DCP Cropland	Double Cropped	MPL/FWP	Native Sod				
0.0	0.0	246.34	0.0	0.0	0.0				

ARC/PLC						
PLC	ARC-CO	ARC-IC	PLC-Default	ARC-CO-Default	ARC-IC-Default	
NONE	CORN , SOYBN	NONE	NONE	NONE	NONE	

Crop	Base Acreage	PLC Yield	CCC-505 CRP Reduction
CORN	54.7	81	0.00
SOYBEANS	79.0	26	0.00
Total Base Acres:	133.7		

Tract Number: 2939 Description R-3 S30,31-T66-R33

FSA Physical Location : Nodaway, MO ANSI Physical Location: Nodaway, MO

BIA Range Unit Number:

HEL Status: HEL: conservation system is being actively applied

Wetland Status: Wetland determinations not complete

WL Violations: None

Farmland	Cropland	DCP Cropland	WBP	WRP	EWP	CRP Cropland	GRP
236.86	212.95	212.95	0.0	0.0	0.0	0.0	0.0
State Conservation	Other Conservation	Effective DCP Cropland	Double Cropped	MPL/FWP	Native Sod		
0.0	0.0	212.95	0.0	0.0	0.0		

Crop	Base Acreage	PLC Yield	CCC-505 CRP Reduction
CORN	32.9	81	0.00
SOYBEANS	73.0	26	0.00
Total Base Acres:	105.9		

1,047 Taxable Acres, Nodaway County, MO
FSA 156EZ- 599.3 Acre Tract

FARM: 6735

Missouri
Nodaway

U.S. Department of Agriculture
Farm Service Agency
Abbreviated 156 Farm Record

Prepared: 11/25/22 9:12 AM
Crop Year: 2023
Page: 1 of 1

Report ID: FSA-156EZ

DISCLAIMER: This is data extracted from the web farm database. Because of potential messaging failures in MIDAS, this data is not guaranteed to be an accurate and complete representation of data contained in the MIDAS system, which is the system of record for Farm Records.

Operator Name

Farm Identifier

NIV 5609=6735+6736

Farms Associated with Operator:

ARC/PLC G//F Eligibility: Eligible

CRP Contract Number(s): None

Farmland	Cropland	DCP Cropland	WBP	WRP	EWP	CRP Cropland	GRP	Farm Status	Number of Tracts
38.96	28.6	28.6	0.0	0.0	0.0	0.0	0.0	Active	1
State Conservation	Other Conservation	Effective DCP Cropland	Double Cropped	MPL/FWP	Native Sod				
0.0	0.0	28.6	0.0	0.0	0.0				

Tract Number: 9451 Description R-3 S30-T66-R33

FSA Physical Location : Nodaway, MO ANSI Physical Location: Nodaway, MO

BIA Range Unit Number:

HEL Status: HEL: conservation system is being actively applied

Wetland Status: Wetland determinations not complete

WL Violations: None

Farmland	Cropland	DCP Cropland	WBP	WRP	EWP	CRP Cropland	GRP
38.96	28.6	28.6	0.0	0.0	0.0	0.0	0.0
State Conservation	Other Conservation	Effective DCP Cropland	Double Cropped	MPL/FWP	Native Sod		
0.0	0.0	28.6	0.0	0.0	0.0		

1,047 Taxable Acres, Nodaway County, MO
FSA 156EZ- 599.3 Acre Tract

Missouri
Nodaway

U.S. Department of Agriculture
Farm Service Agency
Abbreviated 156 Farm Record

Report ID: FSA-156EZ

FARM: 6736

Prepared: 11/25/22 9:11 AM

Crop Year: 2023

Page: 1 of 2

DISCLAIMER: This is data extracted from the web farm database. Because of potential messaging failures in MIDAS, this data is not guaranteed to be an accurate and complete representation of data contained in the MIDAS system, which is the system of record for Farm Records.

Operator Name

Farm Identifier

Farms Associated with Operator:

ARC/PLC G/I/F Eligibility: Eligible

CRP Contract Number(s): None

Farmland	Cropland	DCP Cropland	WBP	WRP	EWP	CRP Cropland	GRP	Farm Status	Number of Tracts
40.19	35.78	35.78	0.0	0.0	0.0	0.0	0.0	Active	1
State Conservation	Other Conservation	Effective DCP Cropland	Double Cropped	MPL/FWP	Native Sod				
0.0	0.0	35.78	0.0	0.0	0.0				
ARC/PLC									
PLC	ARC-CO	ARC-IC	PLC-Default	ARC-CO-Default	ARC-IC-Default				
NONE	CORN , SOYBN	NONE	NONE	NONE	NONE				

Crop	Base Acreage	PLC Yield	CCC-505 CRP Reduction
CORN	14.0	74	0.00
SOYBEANS	11.1	26	0.00
Total Base Acres:	25.1		

Tract Number: 9452 Description R-3 S30-T66-R33

FSA Physical Location : Nodaway, MO

ANSI Physical Location: Nodaway, MO

BIA Range Unit Number:

HEL Status: HEL: conservation system is being actively applied

Wetland Status: Wetland determinations not complete

WL Violations: None

Farmland	Cropland	DCP Cropland	WBP	WRP	EWP	CRP Cropland	GRP
40.19	35.78	35.78	0.0	0.0	0.0	0.0	0.0
State Conservation	Other Conservation	Effective DCP Cropland	Double Cropped	MPL/FWP	Native Sod		
0.0	0.0	35.78	0.0	0.0	0.0		
Crop	Base Acreage	PLC Yield	CCC-505 CRP Reduction				
CORN	14.0	74	0.00				
SOYBEANS	11.1	26	0.00				
Total Base Acres:	25.1						

1,047 Taxable Acres, Nodaway County, MO
FSA 156EZ- 599.3 Acre Tract

Missouri
Nodaway

U.S. Department of Agriculture
Farm Service Agency
Abbreviated 156 Farm Record

FARM: 8237
Prepared: 11/25/22 9:10 AM
Crop Year: 2023
Page: 1 of 1

Report ID: FSA-156EZ

DISCLAIMER: This is data extracted from the web farm database. Because of potential messaging failures in MIDAS, this data is not guaranteed to be an accurate and complete representation of data contained in the MIDAS system, which is the system of record for Farm Records.

Operator Name	Farm Identifier	Recon Number
		2014 - 103

Farms Associated with Operator:

ARC/PLC G//F Eligibility: Eligible

CRP Contract Number(s): None

Farmland	Cropland	DCP Cropland	WBP	WRP	EWP	CRP Cropland	GRP	Farm Status	Number of Tracts
188.47	152.24	152.24	0.0	0.0	0.0	0.0	0.0	Active	1
State Conservation	Other Conservation	Effective DCP Cropland	Double Cropped	MPL/FWP	Native Sod				
0.0	0.0	152.24	0.0	0.0	0.0				

Tract Number: 9129 **Description** S30-T66-R33

FSA Physical Location : Nodaway, MO **ANSI Physical Location:** Nodaway, MO

BIA Range Unit Number:

HEL Status: HEL Determinations not complete

Wetland Status: Tract contains a wetland or farmed wetland

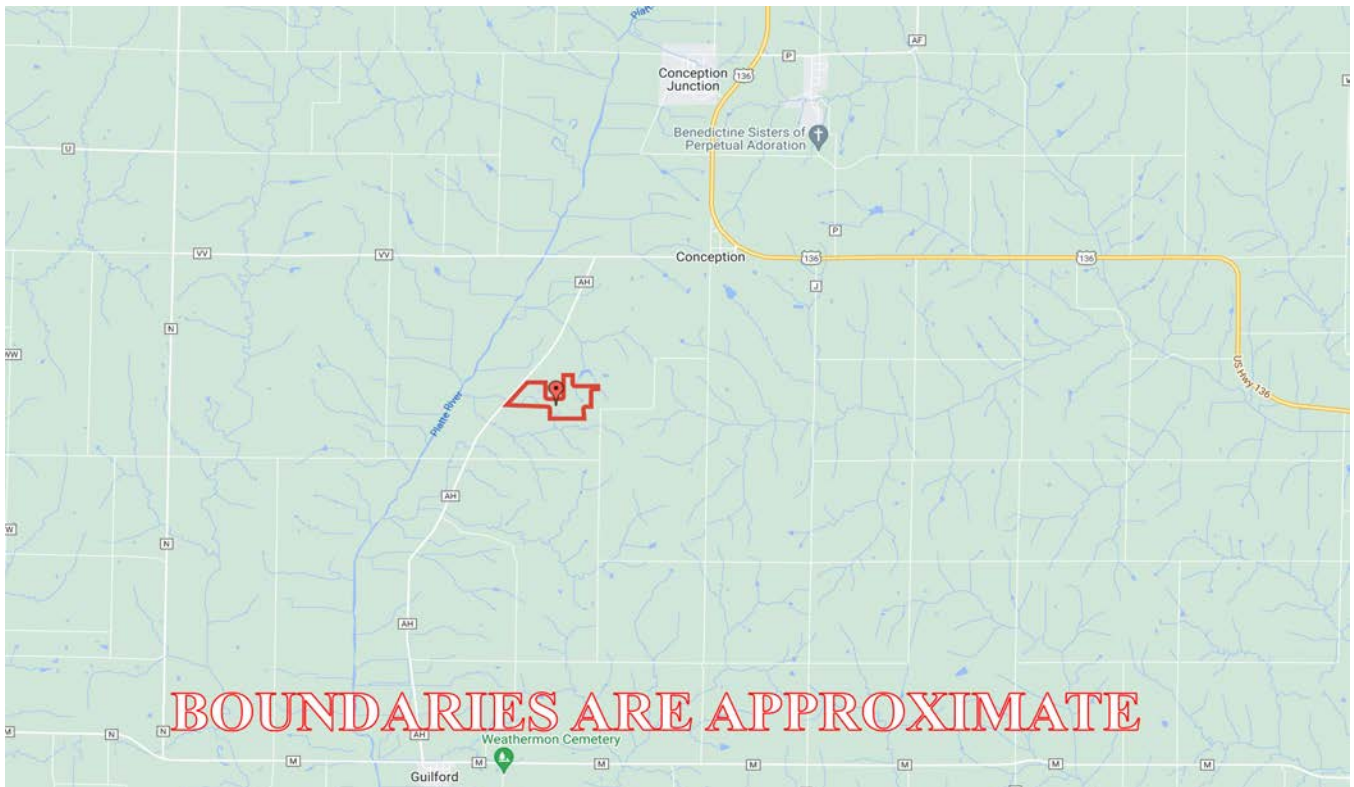
WL Violations: None

Farmland	Cropland	DCP Cropland	WBP	WRP	EWP	CRP Cropland	GRP
188.47	152.24	152.24	0.0	0.0	0.0	0.0	0.0
State Conservation	Other Conservation	Effective DCP Cropland	Double Cropped	MPL/FWP	Native Sod		
0.0	0.0	152.24	0.0	0.0	0.0		

1,047 Taxable Acres, Nodaway County, MO
Google Aerial Map- 151.07 Acre Tract



Driving Map- 151.07 Acre Tract



1,047 Taxable Acres, Nodaway County, MO
Surety Map- 151.07 Acre Tract



www.BarnesRealty.com
(800) 648-3177

Maps Provided By:



© AgriData, Inc. 2021 www.AgrDataInc.com

Map Center: 40° 13' 13.99, -94° 42' 58.21

0ft 828ft 1657ft

34-63N-34W
Nodaway County
Missouri

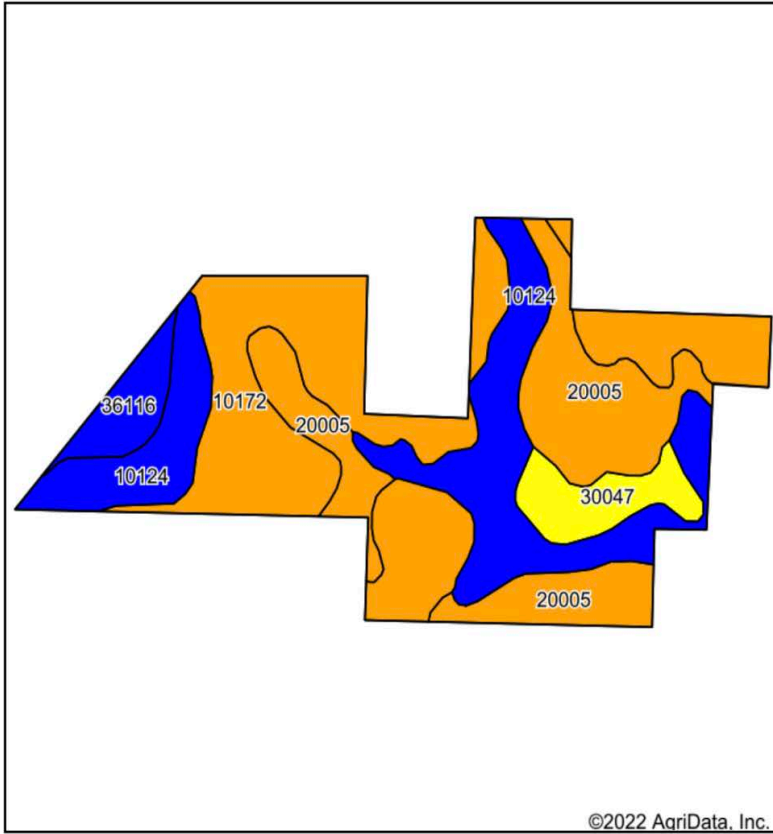


9/15/2022

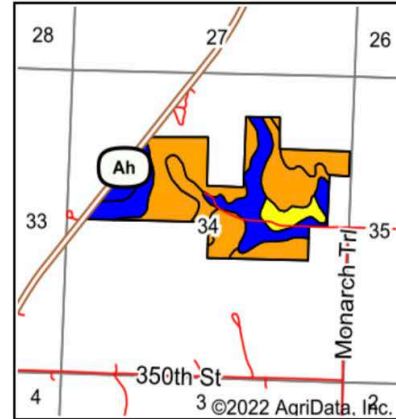
Field borders provided by Farm Service Agency as of 5/21/2008.

1,047 Taxable Acres, Nodaway County, MO

Soil Map- 151.07 Acre Tract



Soils data provided by USDA and NRCS.



State: **Missouri**
 County: **Nodaway**
 Location: **34-63N-34W**
 Township: **Jefferson**
 Acres: **151.07**
 Date: **9/15/2022**



Maps Provided By:



Area Symbol: MO147, Soil Area Version: 23

Code	Soil Description	Acres	Percent of field	Non-Irr Class Legend	Non-Irr Class *c	*n NCCPI Overall	*n NCCPI Corn	*n NCCPI Small Grains	*n NCCPI Soybeans
10172	Shelby clay loam, 9 to 14 percent slopes, moderately eroded	54.14	35.8%		Ille	71	71	57	55
10124	Sharpsburg silty clay loam, loess hill, 2 to 5 percent slopes	40.62	26.9%		Ile	81	81	72	68
20005	Lamoni clay loam, 5 to 9 percent slopes	40.57	26.9%		Ille	63	63	57	55
30047	Clarinda silty clay loam, 5 to 9 percent slopes, moderately eroded	9.12	6.0%		IVw	56	56	48	44
36116	Zook silty clay loam, heavy till, 0 to 2 percent slopes, occasionally flooded	6.62	4.4%		Ilw	74	74	62	68
Weighted Average					2.75	*n 70.8	*n 70.8	*n 60.7	*n 58.4

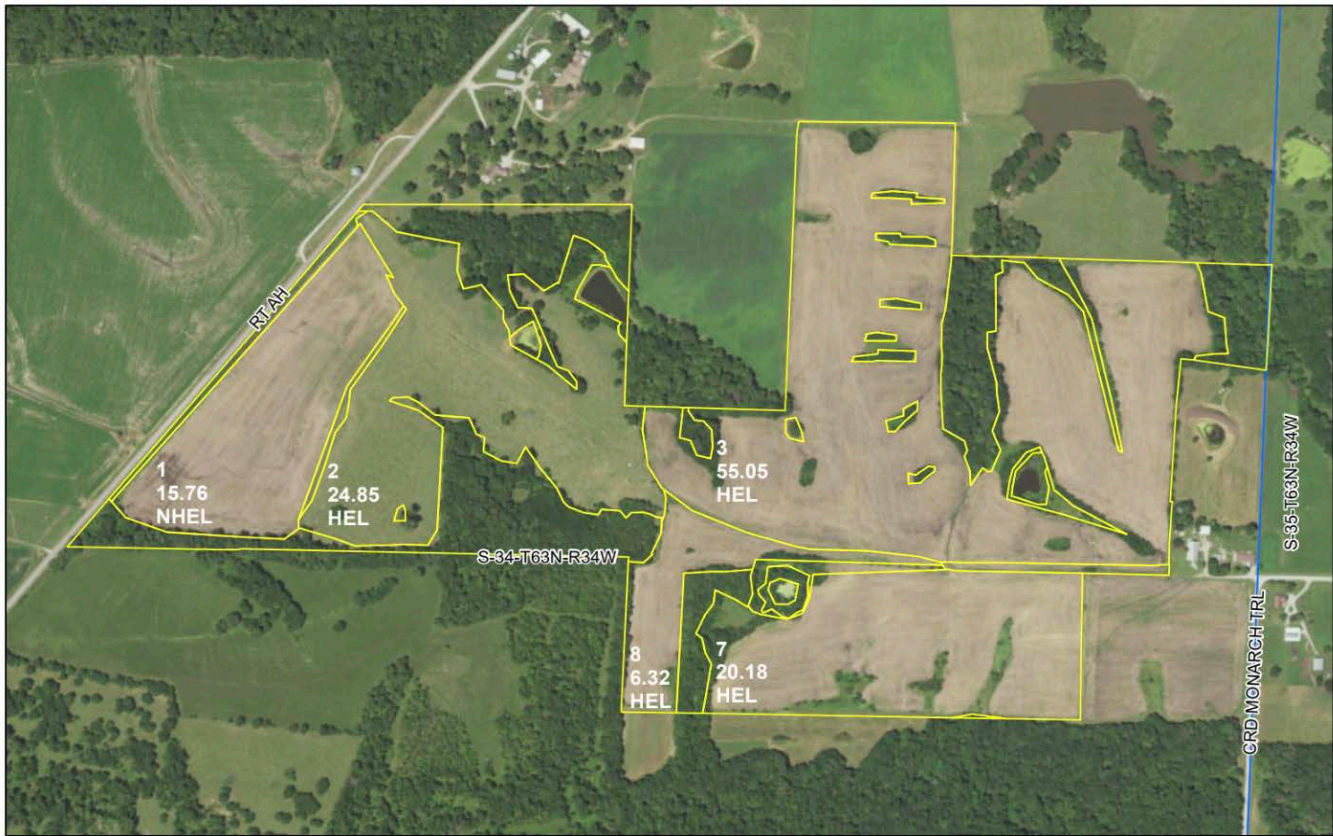
*n: The aggregation method is "Weighted Average using all components"

*c: Using Capabilities Class Dominant Condition Aggregation Method

Soils data provided by USDA and NRCS.

1,047 Taxable Acres, Nodaway County, MO

FSA Aerial Map- 151.07 Acre Tract



 crp All Crop Non Irrigated Unless Notated
 clu C=Corn Yel GR ; CW=Corn Wht GR
 plss SB=Soybn Com GR
 Farm 8293 HRW=Wht HRW GR ; SRW=Wht SRW GR
 Tract 10455 H=MIXFG IGS FG ; P=MIXFG IGS GZ
 FTA=Grass FTA GZ ; LS=Grass FTA LS
 AGM=MIXFG AGM FG ; ALF=Alfal FD
 *Unless notated on Map

Nodaway Co. FSA

1 inch equals 516 feet

Program Year: 2023

Created: 10/7/2022

Flown: 2022-7-10

All Measurements are
For FSA Programs Only

Wetland Determination Identifiers

- Restricted Use
- ▼ Limited Restrictions
- Exempt from Conservation Compliance Provisions

Disclaimer: Wetland identifiers do not represent the size, shape or specific determination of the area. Refer to your original determination (CPA-026 and attached maps) for exact wetland boundaries and determinations, or contact NRCS.

FSA 578- 151.07 Acre Tract

Nodaway, Missouri

FSA - 578 (09-13-16)

Farm Number: 8293

Operator Name and Address

REPORT OF COMMODITIES FARM AND TRACT DETAIL LISTING

PROGRAM YEAR: 2022

DATE: 11/25/2022
PAGE: 1

Original: ANS
Revision: KMS
Cropland: 122.16
Farmland: 155.18

Tract Number	CLU/Field	Crop/Commodity	Var/Type	Int Use	Act Use	Irr. Pr.	Org Stat	Nat. Sod	C/C Stat	Rpt Unit	Rpt Qty	Det Qty	Crop Land	Field ID	Official/Measured	Planting Date	Planting Period	End Date
10455	1	SOYBN	COM	GR		N	C	N	I	A	15.76		Yes		N	06/10/2022	01	
Producer				Share 100.00				FSA Physical Location Nodaway, Missouri				NAP Unit 3404				Signature Date 07/13/2022		
	2	MIXFG	IGS	GZ		N	C	N	I	A	24.85		Yes		N	03/03/2003	01	
Producer				Share 100.00				FSA Physical Location Nodaway, Missouri				NAP Unit 3404				Signature Date 07/13/2022		
	3	SOYBN	COM	GR		N	C	N	I	A	55.05		Yes		N	06/10/2022	01	
Producer				Share 100.00				FSA Physical Location Nodaway, Missouri				NAP Unit 3404				Signature Date 07/13/2022		
	7	SOYBN	COM	GR		N	C	N	I	A	20.18		Yes		N	06/10/2022	01	
Producer				Share 100.00				FSA Physical Location Nodaway, Missouri				NAP Unit 3404				Signature Date 07/13/2022		
	8	SOYBN	COM	GR		N	C	N	I	A	6.32		Yes		N	06/10/2022	01	
Producer				Share 100.00				FSA Physical Location Nodaway, Missouri				NAP Unit 3404				Signature Date 07/13/2022		

Tract 10455 Summary

PP Cr/Co	Var/Type	Int Use	Irr Pr	Rpt Unit	Rpt Qty	PP Cr/Co	Var/Type	Int Use	Irr Pr	Rpt Unit	Rpt Qty	PP Cr/Co	Var/Type	Int Use	Irr Pr	Rpt Unit	Rpt Qty
01	SOYBN	COM	GR	N	A	01	MIXFG	IGS	GZ	N	A	01	SOYBN	COM	GR	N	A
Photo Number/Legal Description: S34,35-T63-R34					97.31	Reported on Cropland: 122.16					24.85	Reported on Non-Cropland: 0.00					
Cropland: 122.16						Difference: 0.00											

1,047 Taxable Acres, Nodaway County, MO
FSA 156EZ- 151.07 Acre Tract

Missouri	U.S. Department of Agriculture	FARM: 8293
Nodaway	Farm Service Agency	Prepared: 11/25/22 7:59 AM
Report ID: FSA-156EZ	Abbreviated 156 Farm Record	Crop Year: 2023
		Page: 1 of 2

DISCLAIMER: This is data extracted from the web farm database. Because of potential messaging failures in MIDAS, this data is not guaranteed to be an accurate and complete representation of data contained in the MIDAS system, which is the system of record for Farm Records.

Operator Name	Farm Identifier	Recon Number
	2015 Div 7139=8292+8293	2015 - 41

Farms Associated with Operator:
193, 942, 3180, 3555, 3565, 5382, 7347, 7389, 8598, 8605, 9044, 9090, 9189

ARC/PLC G//F Eligibility: Eligible

CRP Contract Number(s): None

Farmland	Cropland	DCP Cropland	WBP	WRP	EWP	CRP Cropland	GRP	Farm Status	Number of Tracts
155.18	122.16	122.16	0.0	0.0	0.0	0.0	0.0	Active	1
State Conservation	Other Conservation	Effective DCP Cropland	Double Cropped	MPL/FWP	Native Sod				
0.0	0.0	122.16	0.0	0.0	0.0				

ARC/PLC						
PLC	ARC-CO	ARC-IC	PLC-Default	ARC-CO-Default	ARC-IC-Default	
CORN	WHEAT	NONE	NONE	NONE	NONE	

Crop	Base Acreage	PLC Yield	CCC-505 CRP Reduction
WHEAT	14.19	39	0.00
CORN	27.35	77	0.00
Total Base Acres:	41.54		

Tract Number: 10455 **Description** S34,35-T63-R34
FSA Physical Location : Nodaway, MO **ANSI Physical Location:** Nodaway, MO

BIA Range Unit Number:

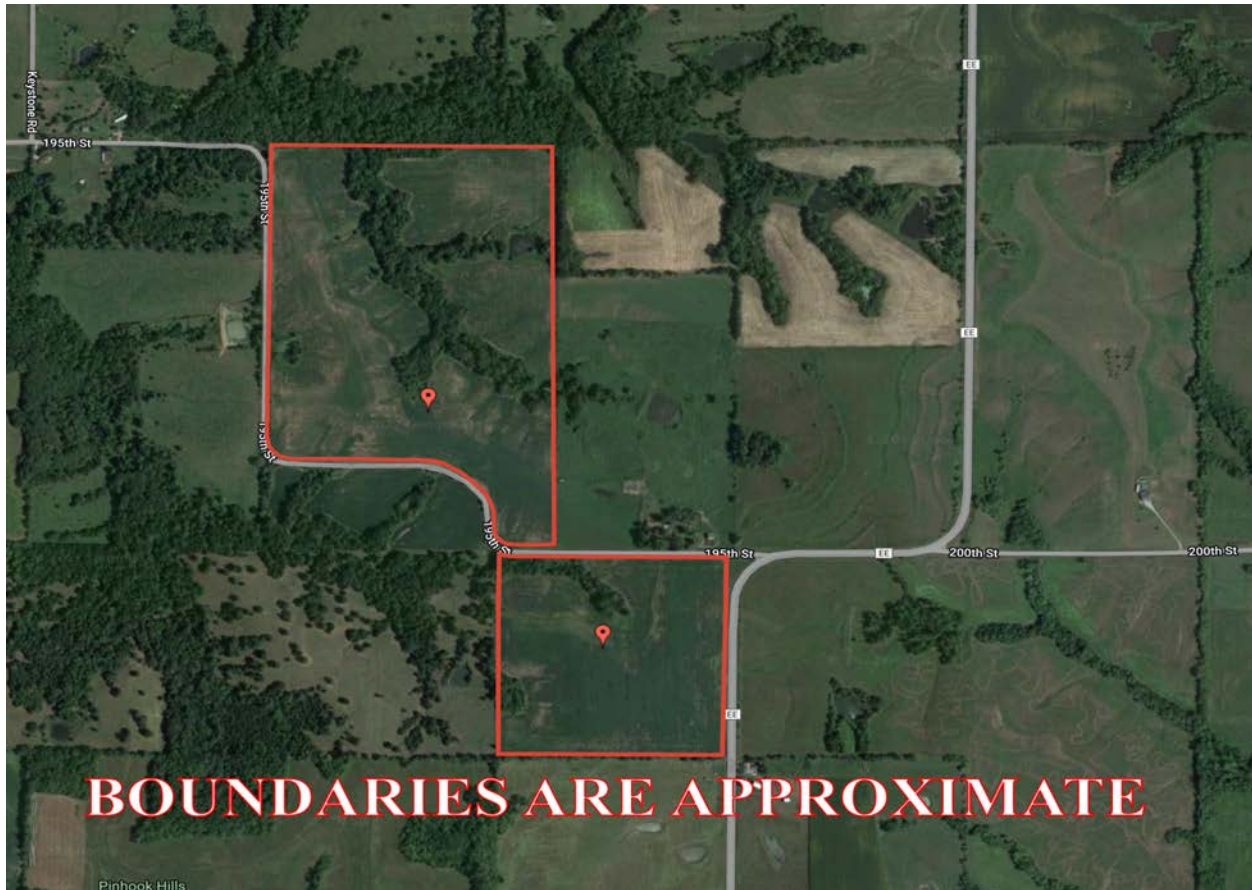
HEL Status: HEL: conservation system is being actively applied	Recon Number
Wetland Status: Tract contains a wetland or farmed wetland	2015- 40

WL Violations: None

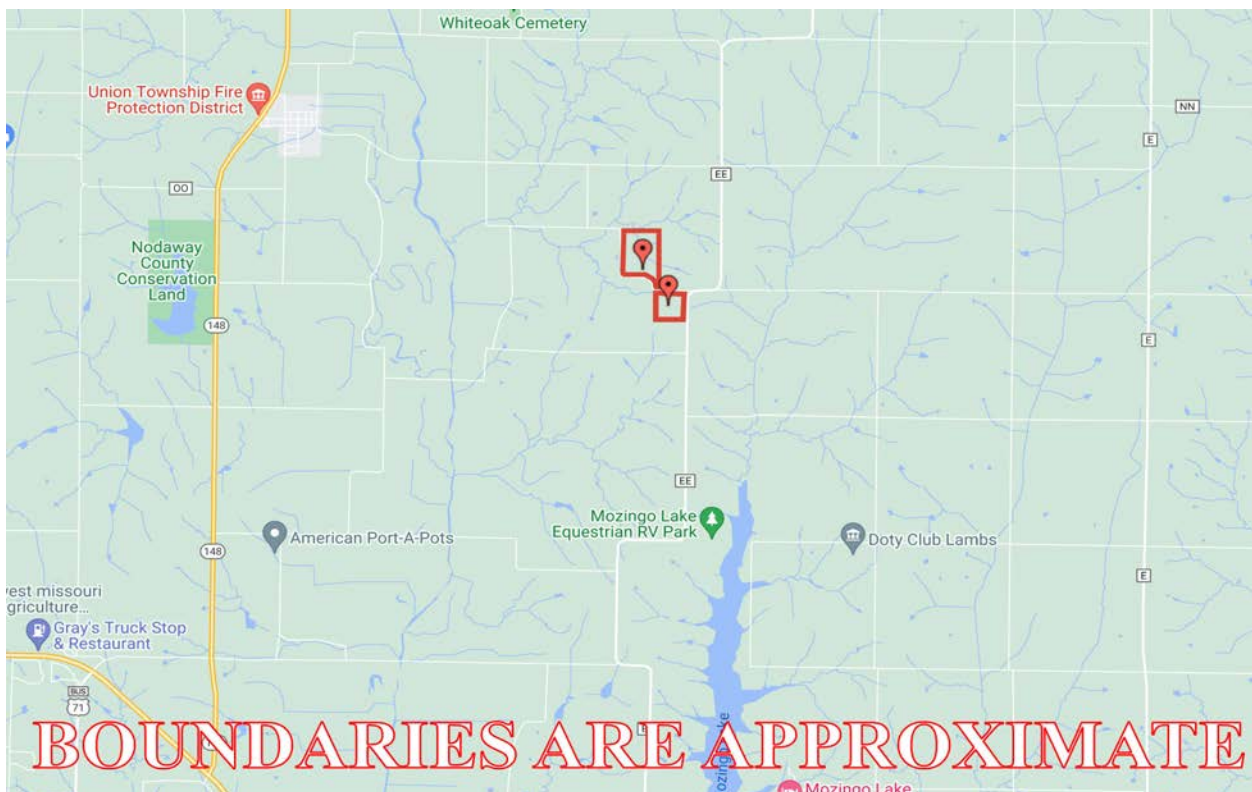
Farmland	Cropland	DCP Cropland	WBP	WRP	EWP	CRP Cropland	GRP
155.18	122.16	122.16	0.0	0.0	0.0	0.0	0.0
State Conservation	Other Conservation	Effective DCP Cropland	Double Cropped	MPL/FWP	Native Sod		
0.0	0.0	122.16	0.0	0.0	0.0		

Crop	Base Acreage	PLC Yield	CCC-505 CRP Reduction
WHEAT	14.19	39	0.00
CORN	27.35	77	0.00
Total Base Acres:	41.54		

1,047 Taxable Acres, Nodaway County, MO
Google Aerial Map- 120.52 Acre Tract



Driving Map- 120.52 Acre Tract



1,047 Taxable Acres, Nodaway County, MO
Surety Map- 120.52 Acre Tract



www.BarnesRealty.com
(800) 648-3177

Maps Provided By:



surety
CUSTOMIZED ONLINE MAPPING

© AgriData, Inc. 2021

www.AgriDataInc.com

Map Center: 40° 25' 58.33, -94° 47' 30.73

0ft 646ft 1292ft

13-65N-35W
Nodaway County
Missouri

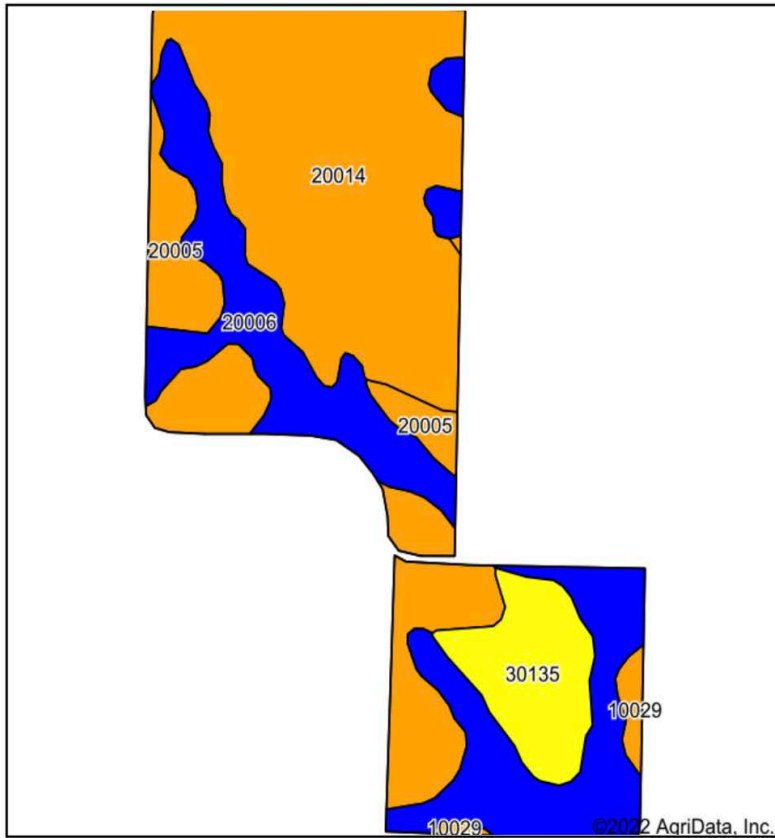


9/15/2022

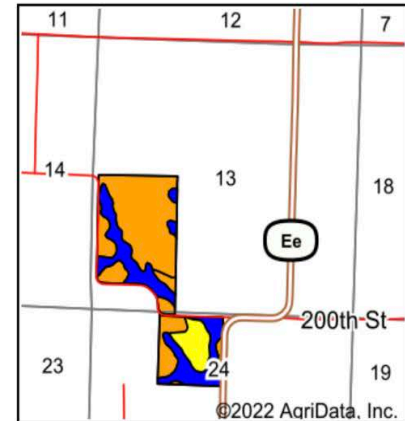
Field borders provided by Farm Service Agency as of 5/21/2008.

1,047 Taxable Acres, Nodaway County, MO

Soil Map- 120.52 Acre Tract



Soils data provided by USDA and NRCS.



State: **Missouri**
 County: **Nodaway**
 Location: **13-65N-35W**
 Township: **Union**
 Acres: **120.52**
 Date: **9/15/2022**



Maps Provided By:



Area Symbol: MO147, Soil Area Version: 23

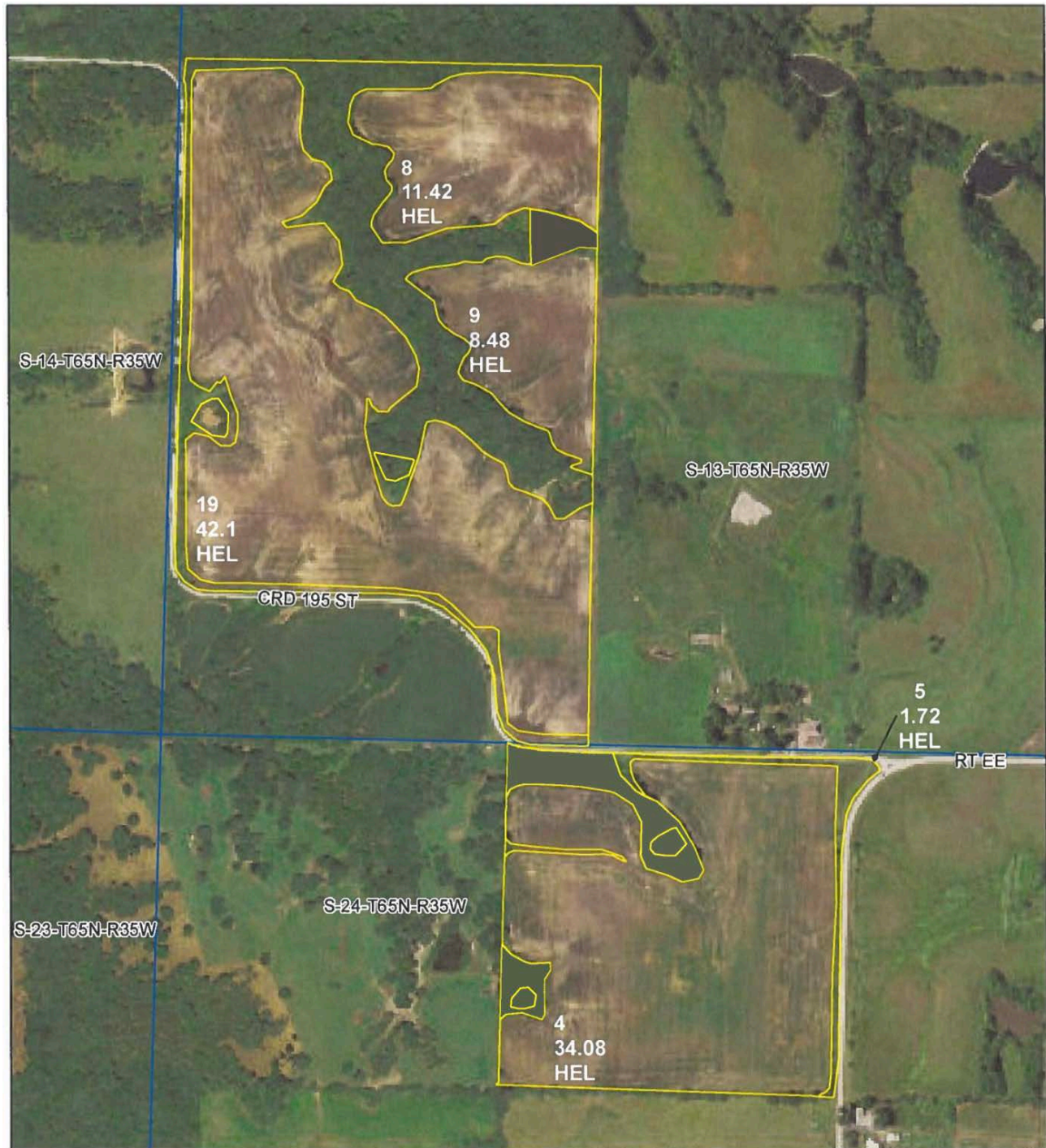
Code	Soil Description	Acres	Percent of field	Non-Irr Class Legend	Non-Irr Class *c	*n NCCPI Overall	*n NCCPI Corn	*n NCCPI Small Grains	*n NCCPI Soybeans
20014	Shelby clay loam, dissected till plain, 9 to 14 percent slopes, eroded	63.41	52.6%		IIle	76	76	57	55
20006	Sharpsburg silty clay loam, 2 to 5 percent slopes	36.55	30.3%		Ile	93	93	78	80
30135	Lamoni clay loam, 9 to 14 percent slopes, moderately eroded	11.27	9.4%		IVe	65	65	60	45
20005	Lamoni clay loam, 5 to 9 percent slopes	7.65	6.3%		IIle	63	63	57	55
10029	Higginsville silty clay loam, 5 to 9 percent slopes, eroded	1.64	1.4%		IIle	70	70	62	63
Weighted Average					2.79	*n 79.2	*n 79.2	*n 63.7	*n 61.8

*n: The aggregation method is "Weighted Average using all components"

*c: Using Capabilities Class Dominant Condition Aggregation Method

Soils data provided by USDA and NRCS.

1,047 Taxable Acres, Nodaway County, MO
FSA Aerial Map- 120.52 Acre Tract



**All Measurements are
For FSA Programs Only**

Wetland Determination Identifiers

- Restricted Use
- ▼ Limited Restrictions
- Exempt from Conservation Compliance Provisions

Disclaimer: Wetland identifiers do not represent the size, shape or specific determination of the area. Refer to your original determination (CPA-026 and attached maps)

Nodaway Co. FSA

All Crop Non Irrigated Unless Notated
 C=Com Yel GR ; CW=Com Whe GR
 SB=Soybn Com GR
 HRW=Wht HRW GR ; SRW=Wht SRW GR
 H=MIXFG IGS FG ; P=MIXFG IGS GZ
 FG=MIXFG LGM FG
 FTA=Grass FTA GZ ; LS=Grass FTA LS
 AGM=MIXFG AGM FG ; ALF=Alfal FD
 *Unless notated on Map

1 inch equals 494 feet



Program Year: 2023

Created: 9/1/2022

Flown: 2020-06-05

- clu
- crp
- plss

**Farm 8156
Tract 10367**

1,047 Taxable Acres, Nodaway County, MO
FSA 156EZ- 120.52 Acre Tract

Missouri
Nodaway

U.S. Department of Agriculture
Farm Service Agency
Abbreviated 156 Farm Record

FARM: 8156
Prepared: 11/25/22 9:10 AM
Crop Year: 2023
Page: 1 of 2

Report ID: FSA-156EZ

DISCLAIMER: This is data extracted from the web farm database. Because of potential messaging failures in MIDAS, this data is not guaranteed to be an accurate and complete representation of data contained in the MIDAS system, which is the system of record for Farm Records.

Operator Name	Farm Identifier	Recon Number
		2014 - 59

Farms Associated with Operator:

ARC/PLC G//F Eligibility: Eligible

CRP Contract Number(s): None

Farmland	Cropland	DCP Cropland	WBP	WRP	EWP	CRP Cropland	GRP	Farm Status	Number of Tracts
121.33	97.8	97.8	0.0	0.0	0.0	0.0	0.0	Active	1
State Conservation	Other Conservation	Effective DCP Cropland	Double Cropped	MPL/FWP	Native Sod				
0.0	0.0	97.8	0.0	0.0	0.0				

ARC/PLC					
PLC	ARC-CO	ARC-IC	PLC-Default	ARC-CO-Default	ARC-IC-Default
NONE	CORN , SOYBN	NONE	NONE	NONE	NONE

Crop	Base Acreage	PLC Yield	CCC-505 CRP Reduction
CORN	46.2	119	0.00
SOYBEANS	46.2	39	0.00
Total Base Acres:	92.4		

Tract Number: 10367 Description S13,24-T65-R35

FSA Physical Location : Nodaway, MO ANSI Physical Location: Nodaway, MO

BIA Range Unit Number:

HEL Status: HEL: conservation system is being actively applied

Wetland Status: Wetland determinations not complete

WL Violations: None

Farmland	Cropland	DCP Cropland	WBP	WRP	EWP	CRP Cropland	GRP
121.33	97.8	97.8	0.0	0.0	0.0	0.0	0.0
State Conservation	Other Conservation	Effective DCP Cropland	Double Cropped	MPL/FWP	Native Sod		
0.0	0.0	97.8	0.0	0.0	0.0		

Crop	Base Acreage	PLC Yield	CCC-505 CRP Reduction
CORN	46.2	119	0.00
SOYBEANS	46.2	39	0.00
Total Base Acres:	92.4		

1,047 Taxable Acres, Nodaway County, MO

FSA 578- 120.52 Acre Tract

Nodaway, Missouri

FSA - 578 (09-13-16)

Farm Number: 8156

Operator Name and Address

REPORT OF COMMODITIES FARM AND TRACT DETAIL LISTING

PROGRAM YEAR: 2022

DATE: 11/25/2022

PAGE: 1

Original: ELL
Revision: _____
Cropland: 97.80
Farmland: 121.33

Tract Number	CLU/Field	Crop/Commodity	Var/Type	Int Use	Act Use	Irr. Pr.	Org Stat	Nat. Sod	C/C Stat	Rpt Unit	Rpt Qty	Det Qty	Crop Land	Field ID	Official/Measured	Planting Date	Planting Period	End Date
10367	4	SOYBN	COM	GR		N	C	N	I	A	34.08		Yes		N	05/25/2022	01	
Producer						Share 50.00	FSA Physical Location Nodaway, Missouri								NAP Unit 5454	Signature Date 07/12/2022		
						50.00	Nodaway, Missouri											
5		GRASS	FTA	LS		N	C	N	I	A	1.72		Yes		N	03/03/2003	01	
Producer						Share 50.00	FSA Physical Location Nodaway, Missouri								NAP Unit 5454	Signature Date 07/12/2022		
						50.00	Nodaway, Missouri											
8		SOYBN	COM	GR		N	C	N	I	A	11.42		Yes		N	05/25/2022	01	
Producer						Share 50.00	FSA Physical Location Nodaway, Missouri								NAP Unit 5454	Signature Date 07/12/2022		
						50.00	Nodaway, Missouri											
9		SOYBN	COM	GR		N	C	N	I	A	8.48		Yes		N	05/25/2022	01	
Producer						Share 50.00	FSA Physical Location Nodaway, Missouri								NAP Unit 5454	Signature Date 07/12/2022		
						50.00	Nodaway, Missouri											
19		SOYBN	COM	GR		N	C	N	I	A	42.10		Yes		N	05/25/2022	01	
Producer						Share 50.00	FSA Physical Location Nodaway, Missouri								NAP Unit 5454	Signature Date 07/12/2022		
						50.00	Nodaway, Missouri											

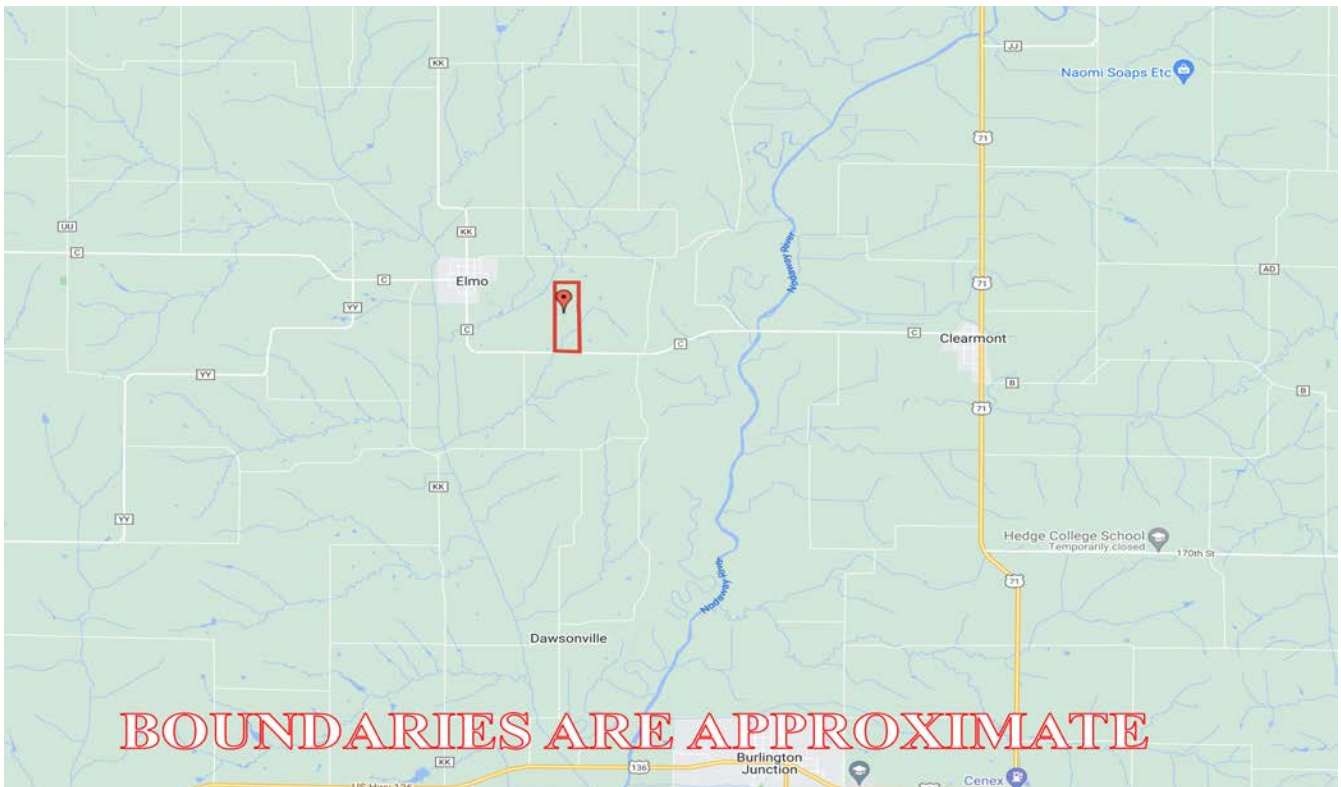
Tract 10367 Summary

PP	Cr/Co	Var/Type	Int Use	Irr Pr	Rpt Unit	Rpt Qty	PP	Cr/Co	Var/Type	Int Use	Irr Pr	Rpt Unit	Rpt Qty	PP	Cr/Co	Var/Type	Int Use	Irr Pr	Rpt Unit	Rpt Qty
01	SOYBN	COM	GR	N	A	96.08	01	GRASS	FTA	LS	N	A	1.72							
Photo Number/Legal Description: S13,24-T65-R35																				
Cropland: 97.80						Reported on Cropland: 97.80						Difference: 0.00				Reported on Non-Cropland: 0.00				

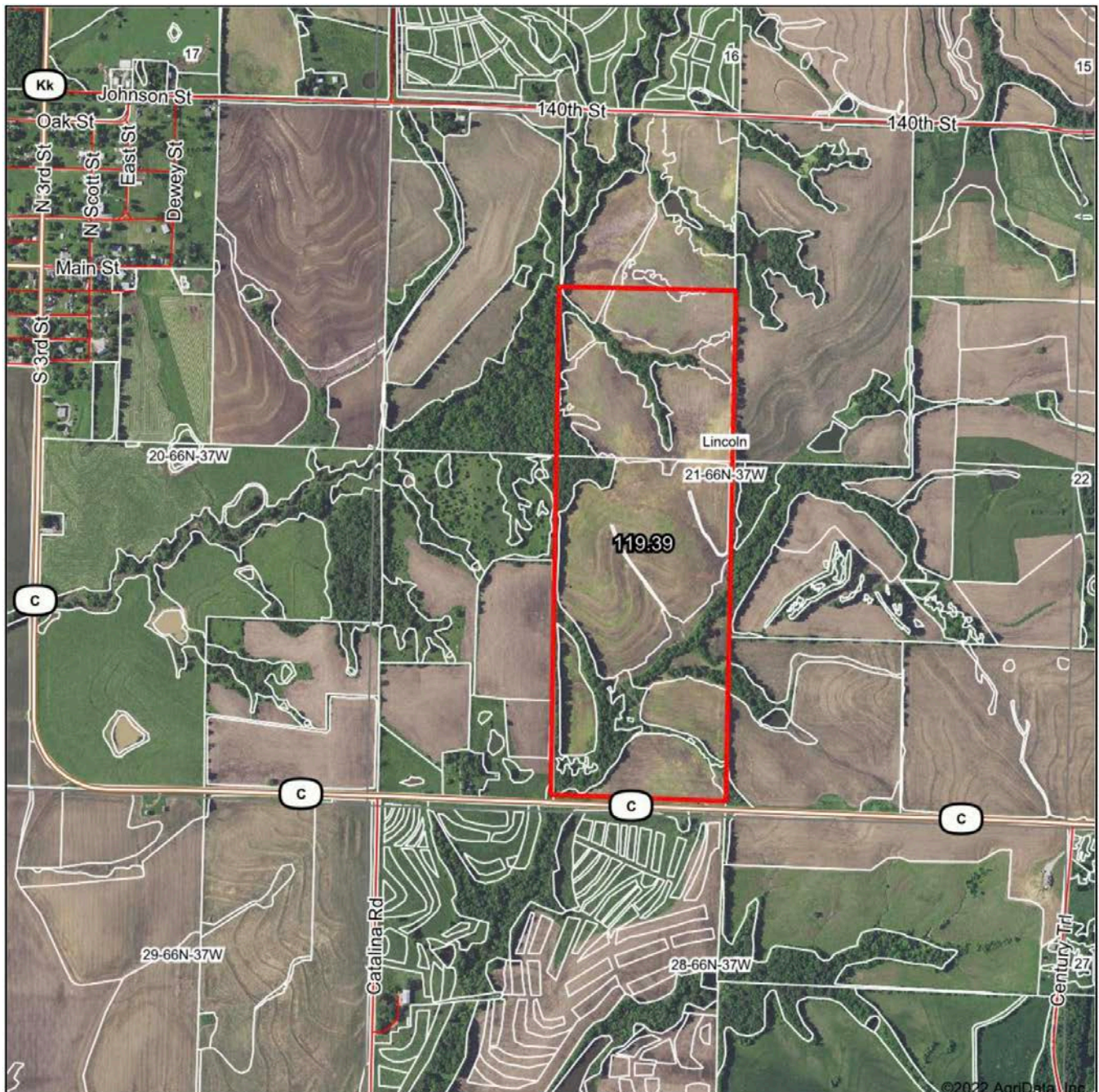
1,047 Taxable Acres, Nodaway County, MO
Google Aerial Map- 119.39 Acre Tract



Driving Map- 119.39 Acre Tract



1,047 Taxable Acres, Nodaway County, MO
Surety Map- 119.39 Acre Tract



www.BarnesRealty.com
(800) 648-3177

Maps Provided By:



surety
CUSTOMIZED ONLINE MAPPING

© AgriData, Inc. 2021

www.AgriDataInc.com

Map Center: 40° 30' 45.97, -95° 6' 8.44

0ft 1185ft 2370ft

21-66N-37W
Nodaway County
Missouri

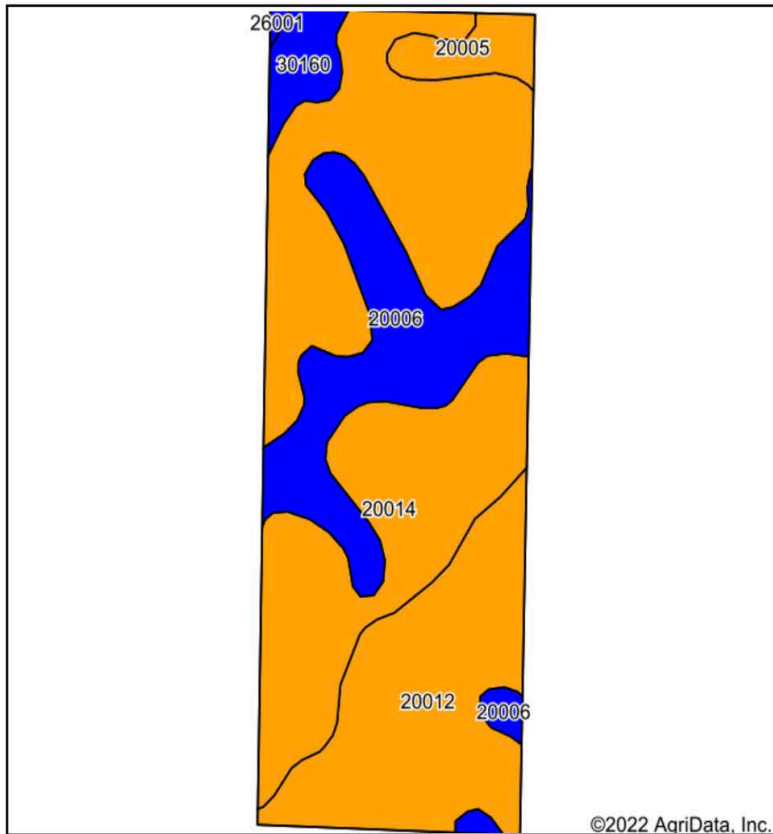


9/15/2022

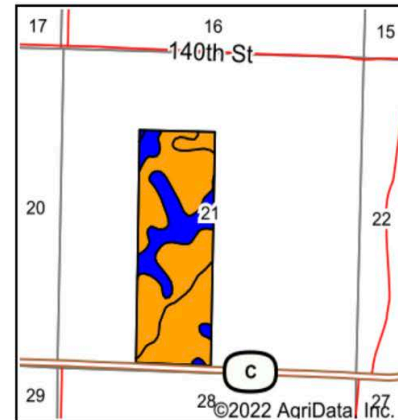
Field borders provided by Farm Service Agency as of 5/21/2008.

1,047 Taxable Acres, Nodaway County, MO

Soil Map- 119.39 Acre Tract



Soils data provided by USDA and NRCS.



State: **Missouri**
 County: **Nodaway**
 Location: **21-66N-37W**
 Township: **Lincoln**
 Acres: **119.39**
 Date: **9/15/2022**



Maps Provided By:



Area Symbol: MO147, Soil Area Version: 23

Code	Soil Description	Acres	Percent of field	Non-Irr Class Legend	Non-Irr Class *c	*n NCCPI Overall	*n NCCPI Corn	*n NCCPI Small Grains	*n NCCPI Soybeans
20014	Shelby clay loam, dissected till plain, 9 to 14 percent slopes, eroded	60.82	50.9%		IIIe	76	76	57	55
20012	Shelby clay loam, dissected till plain, 5 to 9 percent slopes, eroded	27.67	23.2%		IIIe	78	78	59	58
20006	Sharpsburg silty clay loam, 2 to 5 percent slopes	22.90	19.2%		Ile	93	93	78	80
20005	Lamoni clay loam, 5 to 9 percent slopes	3.99	3.3%		IIIe	63	63	57	55
30160	Olmitz loam, 2 to 5 percent slopes	3.76	3.1%		Ile	96	96	70	82
26001	Dockery-Quiver silt loams, 0 to 2 percent slopes, occasionally flooded	0.25	0.2%		IIw	94	85	49	93
Weighted Average					2.77	*n 80	*n 79.9	*n 61.9	*n 61.4

*n: The aggregation method is "Weighted Average using all components"

*c: Using Capabilities Class Dominant Condition Aggregation Method

Soils data provided by USDA and NRCS.

1,047 Taxable Acres, Nodaway County, MO
FSA Aerial Map- 119.39 Acre Tract



**All Measurements are
For FSA Programs Only**

Wetland Determination Identifiers

- Restricted Use
- ▼ Limited Restrictions
- Exempt from Conservation Compliance Provisions

Disclaimer: Wetland identifiers do not represent the size, shape or specific determination of the area.
Refer to your original determination (CPA-026 and attached maps)

Nodaway Co. FSA

All Crop Non Irrigated Unless Notated
C=Com Yel GR ; CW=Com Whe GR
SB=Soybn Com GR
HRW=Wht HRW GR ; SRW=Wht SRW GR
H=MIXFG IGS FG ; P=MIXFG IGS GZ
FG=MIXFG LGM FG
FTA=Grass FTA GZ ; LS=Grass FTA LS
AGM=MIXFG AGM FG ; ALF=Alfal FD
*! Unless notated on Map

1 inch equals 184 feet

Program Year: 2023

Created: 9/1/2022

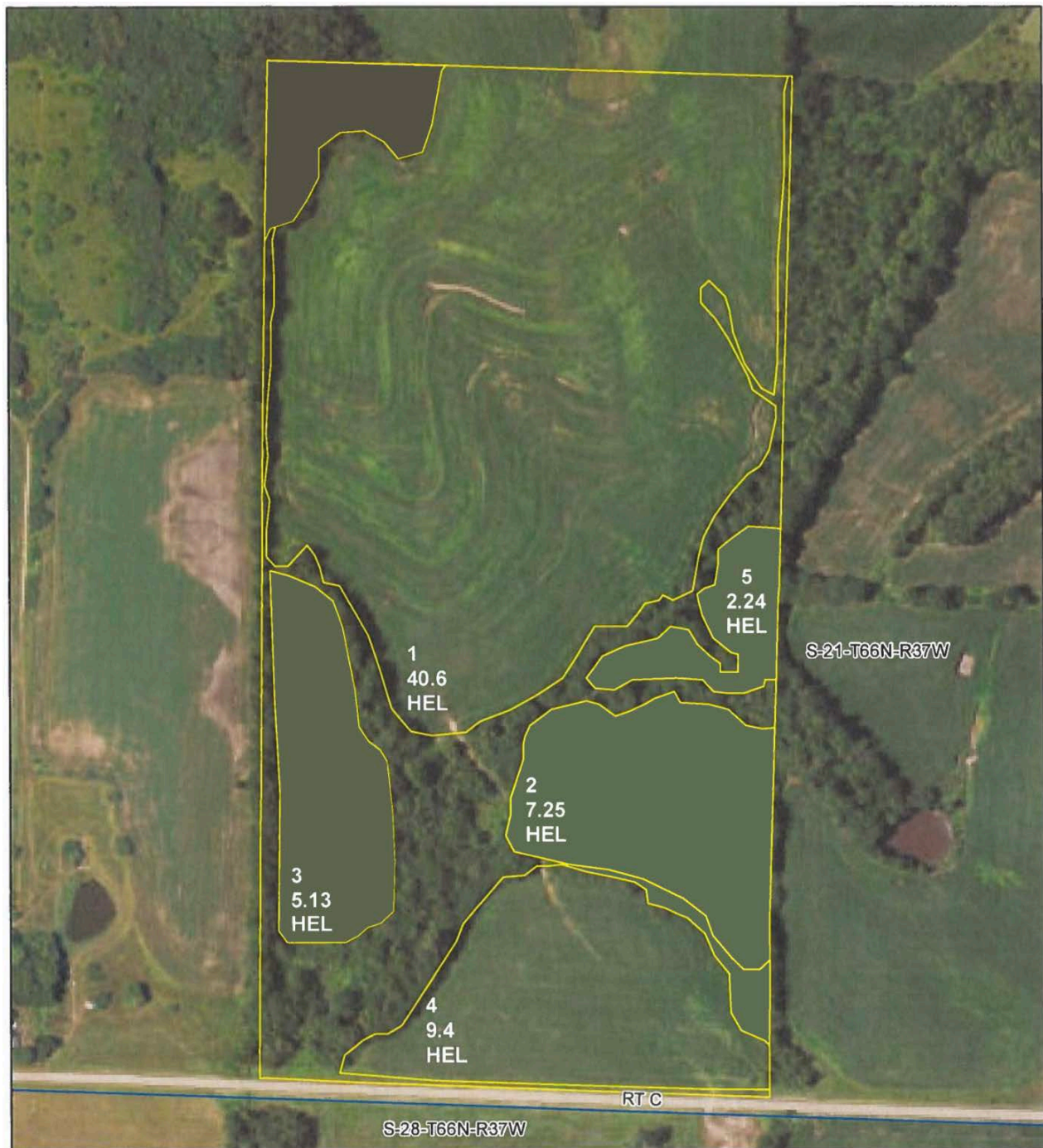
Flown: 2020-06-05

- clu
- crp
- plss

**Farm 8385
Tract 10538**



1,047 Taxable Acres, Nodaway County, MO
FSA Aerial Map- 119.39 Acre Tract



**All Measurements are
For FSA Programs Only**

Wetland Determination Identifiers

- Restricted Use
- ▼ Limited Restrictions
- Exempt from Conservation Compliance Provisions

Disclaimer: Wetland identifiers do not represent the size, shape or specific determination of the area. Refer to your original determination (CPA-026 and attached maps)

Nodaway Co. FSA

All Crop Non Irrigated Unless Notated
 C=Com Yel GR ; CW=Com Whe GR
 SB=Soybn Com GR
 HRW=Wht HRW GR ; SRW=Wht SRW GR
 H=MIXFG IGS FG ; P=MIXFG IGS GZ
 FG=MIXFG LGM FG
 FTA=Grass FTA GZ ; LS=Grass FTA LS
 AGM=MIXFG AGM FG ; ALF=Alfal FD
 *Unless notated on Map

1 inch equals 328 feet

Program Year: 2023

Created: 9/1/2022

Flown: 2020-06-05

- clu
- crp
- plss

**Farm 6302
Tract 2590**

1,047 Taxable Acres, Nodaway County, MO
FSA 156EZ- 119.39 Acre Tract

Missouri Nodaway Report ID: FSA-156EZ	U.S. Department of Agriculture Farm Service Agency Abbreviated 156 Farm Record	FARM: 8385 Prepared: 11/25/22 9:03 AM Crop Year: 2023 Page: 1 of 2
<small>DISCLAIMER: This is data extracted from the web farm database. Because of potential messaging failures in MIDAS, this data is not guaranteed to be an accurate and complete representation of data contained in the MIDAS system, which is the system of record for Farm Records.</small>		

Operator Name	Farm Identifier	Recon Number
	2016 DIV 7216=8384+8385	2016 - 50

Farms Associated with Operator:

ARC/PLC G//F Eligibility: Eligible

CRP Contract Number(s): None

Farmland	Cropland	DCP Cropland	WBP	WRP	EWP	CRP Cropland	GRP	Farm Status	Number of Tracts
40.39	35.41	35.41	0.0	0.0	0.0	0.0	0.0	Active	1
State Conservation	Other Conservation	Effective DCP Cropland	Double Cropped	MPL/FWP	Native Sod				
0.0	0.0	35.41	0.0	0.0	0.0				

ARC/PLC						
PLC	ARC-CO	ARC-IC	PLC-Default	ARC-CO-Default	ARC-IC-Default	
NONE	CORN , SOYBN	NONE	NONE	NONE	NONE	

Crop	Base Acreage	PLC Yield	CCC-505 CRP Reduction
CORN	16.51	81	0.00
SOYBEANS	3.5	36	0.00
Total Base Acres:	20.01		

Tract Number: 10538 Description S21-T66-R37

FSA Physical Location : Nodaway, MO

ANSI Physical Location: Nodaway, MO

BIA Range Unit Number:

HEL Status: HEL: conservation system is being actively applied

Recon Number

Wetland Status: Tract contains a wetland or farmed wetland

2016 - 49

WL Violations: None

Farmland	Cropland	DCP Cropland	WBP	WRP	EWP	CRP Cropland	GRP
40.39	35.41	35.41	0.0	0.0	0.0	0.0	0.0
State Conservation	Other Conservation	Effective DCP Cropland	Double Cropped	MPL/FWP	Native Sod		
0.0	0.0	35.41	0.0	0.0	0.0		

Crop	Base Acreage	PLC Yield	CCC-505 CRP Reduction
CORN	16.51	81	0.00
SOYBEANS	3.5	36	0.00
Total Base Acres:	20.01		

1,047 Taxable Acres, Nodaway County, MO
FSA 156EZ- 119.39 Acre Tract

Missouri
Nodaway

U.S. Department of Agriculture
Farm Service Agency

Abbreviated 156 Farm Record

FARM: 6302

Prepared: 11/25/22 9:03 AM

Crop Year: 2023

Page: 1 of 2

Report ID: FSA-156EZ

DISCLAIMER: This is data extracted from the web farm database. Because of potential messaging failures in MIDAS, this data is not guaranteed to be an accurate and complete representation of data contained in the MIDAS system, which is the system of record for Farm Records.

Operator Name

Farm Identifier

DIV 5153= 6298 THRU 6304

Farms Associated with Operator:

ARC/PLC G/I/F Eligibility: Eligible

CRP Contract Number(s): None

Farmland	Cropland	DCP Cropland	WBP	WRP	EWP	CRP Cropland	GRP	Farm Status	Number of Tracts
80.35	64.62	64.62	0.0	0.0	0.0	0.0	0.0	Active	1
State Conservation	Other Conservation	Effective DCP Cropland	Double Cropped	MPL/FWP	Native Sod				
0.0	0.0	64.62	0.0	0.0	0.0				

ARC/PLC

PLC	ARC-CO	ARC-IC	PLC-Default	ARC-CO-Default	ARC-IC-Default
NONE	CORN , SOYBN	NONE	NONE	NONE	NONE

Crop	Base Acreage	PLC Yield	CCC-505 CRP Reduction
CORN	30.47	107	0.00
SOYBEANS	29.93	34	0.00
Total Base Acres:	60.4		

Tract Number: 2590 **Description** D-3 S21-T66-R37

FSA Physical Location : Nodaway, MO

ANSI Physical Location: Nodaway, MO

BIA Range Unit Number:

HEL Status: HEL: conservation system is being actively applied

Wetland Status: Tract does not contain a wetland

WL Violations: None

Farmland	Cropland	DCP Cropland	WBP	WRP	EWP	CRP Cropland	GRP
80.35	64.62	64.62	0.0	0.0	0.0	0.0	0.0
State Conservation	Other Conservation	Effective DCP Cropland	Double Cropped	MPL/FWP	Native Sod		
0.0	0.0	64.62	0.0	0.0	0.0		

Crop	Base Acreage	PLC Yield	CCC-505 CRP Reduction
CORN	30.47	107	0.00
SOYBEANS	29.93	34	0.00
Total Base Acres:	60.4		

1,047 Taxable Acres, Nodaway County, MO
FSA 578- 119.39 Acre Tract

Nodaway, Missouri

FSA - 578 (09-13-16)

Farm Number: 8385

Operator Name and Address

REPORT OF COMMODITIES
FARM AND TRACT DETAIL LISTING

PROGRAM YEAR: 2022

DATE: 11/25/2022
PAGE: 1

Original: PJH

Revision: _____

Cropland: 35.41

Farmland: 40.39

Tract Number	CLU/Field	Crop/Commodity	Var/Type	Int Use	Act Use	Irr. Pr.	Org Stat	Nat. Sod	C/C Stat	Rpt Unit	Rpt Qty	Det Qty	Crop Land	Field ID	Official/Measured	Planting Date	Planting Period	End Date
10538	46	CORN	YEL	GR		N	C	N	I	A	35.41		Yes		N	04/30/2022	01	

Producer: _____ Share 100.00 FSA Physical Location Nodaway, Missouri

NAP Unit 5553 Signature Date 06/15/2022

Tract 10538 Summary

PP Cr/Co	Var/Type	Int Use	Irr Pr	Rpt Unit	Rpt Qty	PP Cr/Co	Var/Type	Int Use	Irr Pr	Rpt Unit	Rpt Qty	PP Cr/Co	Var/Type	Int Use	Irr Pr	Rpt Unit	Rpt Qty
01 CORN	YEL	GR	N	A	35.41												

Photo Number/Legal Description: S21-T66-R37

Cropland: 35.41

Reported on Cropland: 35.41

Difference: 0.00

Reported on Non-Cropland: 0.00

Nodaway, Missouri

FSA - 578 (09-13-16)

Farm Number: 6302

Operator Name and Address

REPORT OF COMMODITIES
FARM AND TRACT DETAIL LISTING

PROGRAM YEAR: 2022

DATE: 11/25/2022
PAGE: 1

Original: PJH

Revision: _____

Cropland: 64.62

Farmland: 80.35

Tract Number	CLU/Field	Crop/Commodity	Var/Type	Int Use	Act Use	Irr. Pr.	Org Stat	Nat. Sod	C/C Stat	Rpt Unit	Rpt Qty	Det Qty	Crop Land	Field ID	Official/Measured	Planting Date	Planting Period	End Date
2590	1	CORN	YEL	GR		N	C	N	I	A	40.60		Yes		N	04/30/2022	01	

Producer: _____ Share 100.00 FSA Physical Location Nodaway, Missouri

NAP Unit 5553 Signature Date 06/15/2022

2	CORN	YEL	GR		N	C	N	I	A	7.25		Yes	N	04/30/2022	01	
---	------	-----	----	--	---	---	---	---	---	------	--	-----	---	------------	----	--

Producer: _____ Share 100.00 FSA Physical Location Nodaway, Missouri

NAP Unit 5553 Signature Date 06/15/2022

3	CORN	YEL	GR		N	C	N	I	A	5.13		Yes	N	04/30/2022	01	
---	------	-----	----	--	---	---	---	---	---	------	--	-----	---	------------	----	--

Producer: _____ Share 100.00 FSA Physical Location Nodaway, Missouri

NAP Unit 5553 Signature Date 06/15/2022

4	CORN	YEL	GR		N	C	N	I	A	9.40		Yes	N	04/30/2022	01	
---	------	-----	----	--	---	---	---	---	---	------	--	-----	---	------------	----	--

Producer: _____ Share 100.00 FSA Physical Location Nodaway, Missouri

NAP Unit 5553 Signature Date 06/15/2022

5	CORN	YEL	GR		N	C	N	I	A	2.24		Yes	N	04/30/2022	01	
---	------	-----	----	--	---	---	---	---	---	------	--	-----	---	------------	----	--

Producer: _____ Share 100.00 FSA Physical Location Nodaway, Missouri

NAP Unit 5553 Signature Date 06/15/2022

Tract 2590 Summary

PP Cr/Co	Var/Type	Int Use	Irr Pr	Rpt Unit	Rpt Qty	PP Cr/Co	Var/Type	Int Use	Irr Pr	Rpt Unit	Rpt Qty	PP Cr/Co	Var/Type	Int Use	Irr Pr	Rpt Unit	Rpt Qty
01 CORN	YEL	GR	N	A	64.62												

Photo Number/Legal Description: D-3 S21-T66-R37

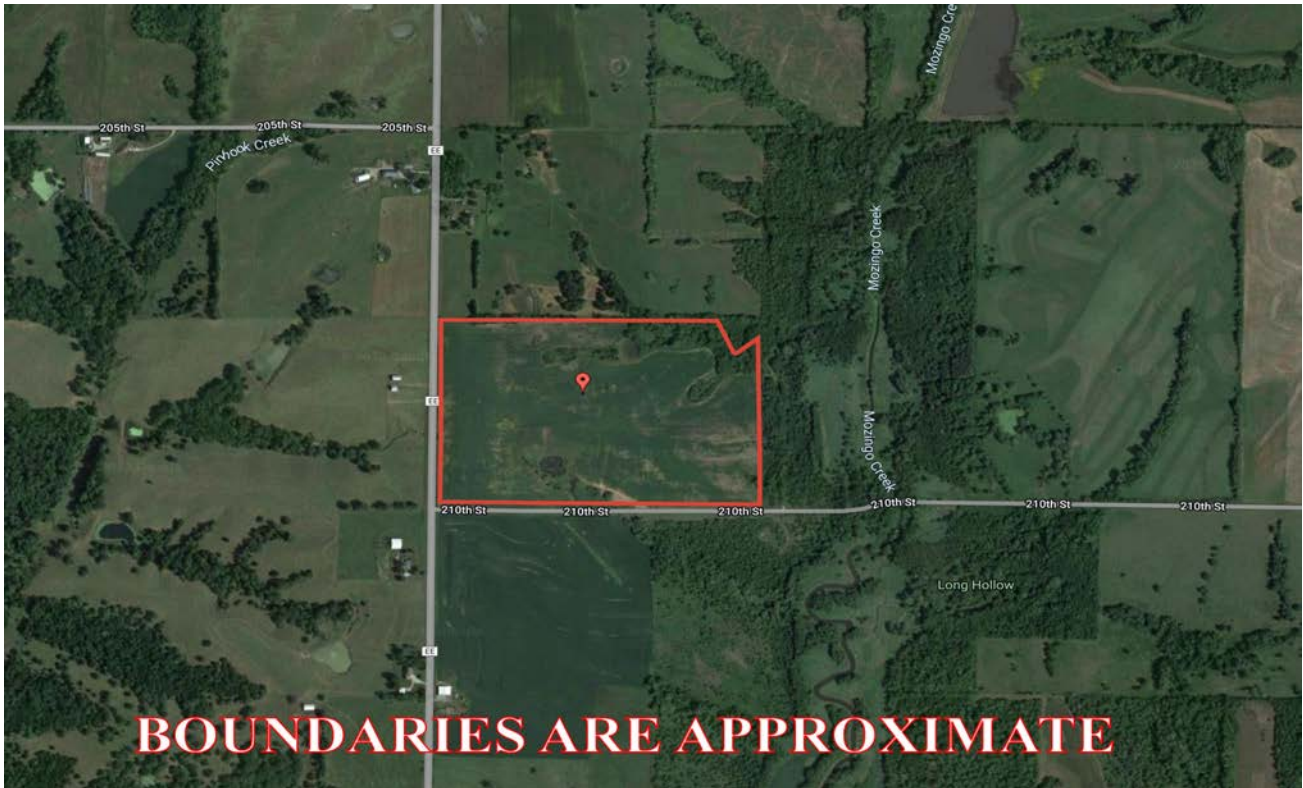
Cropland: 64.62

Reported on Cropland: 64.62

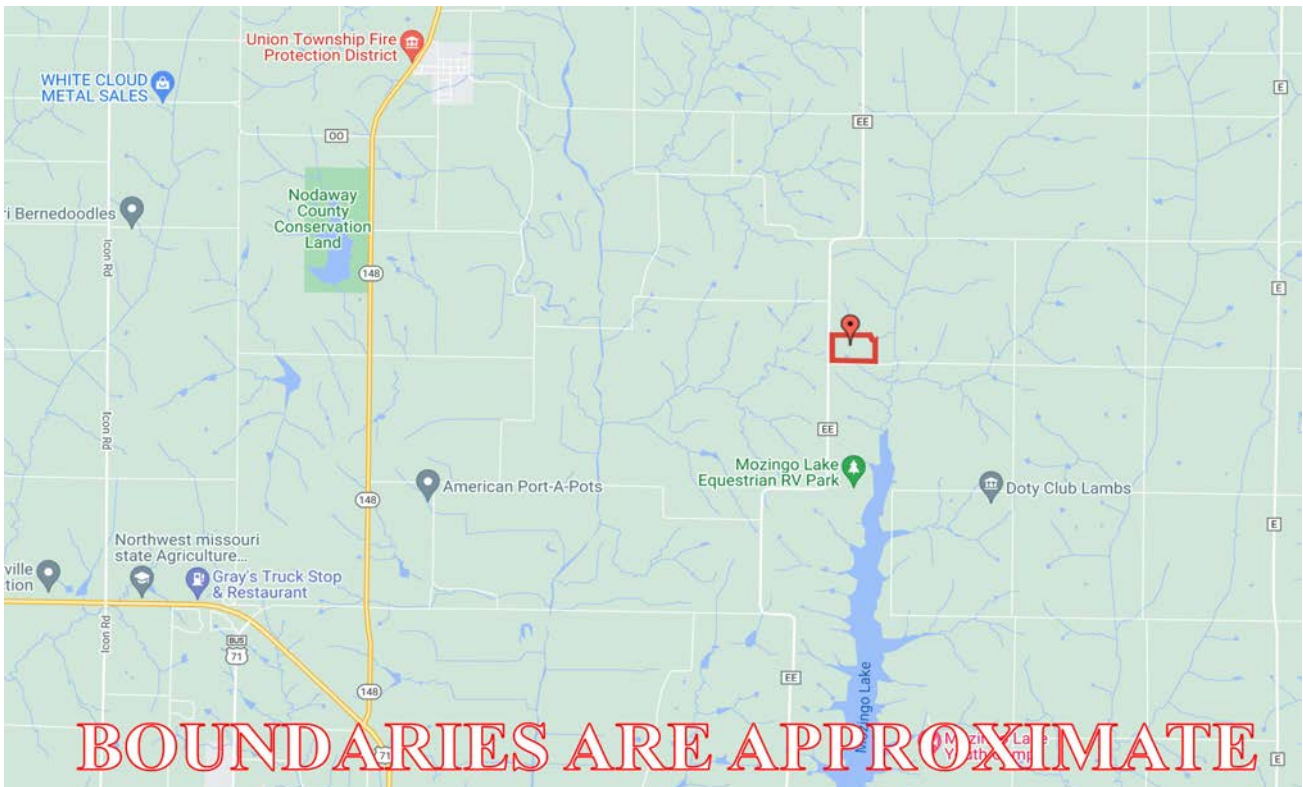
Difference: 0.00

Reported on Non-Cropland: 0.00

1,047 Taxable Acres, Nodaway County, MO
Google Aerial Map- 57.38 Acre Tract



Driving Map- 57.38 Acre Tract



1,047 Taxable Acres, Nodaway County, MO
Surety Map- 57.38 Acre Tract



www.BarnesRealty.com
(800) 648-3177

Maps Provided By:



© AgriData, Inc. 2021 www.AgridataInc.com

Field borders provided by Farm Service Agency as of 5/21/2008.

Map Center: 40° 25' 9.2, -94° 47' 10.54

0ft 922ft 1844ft

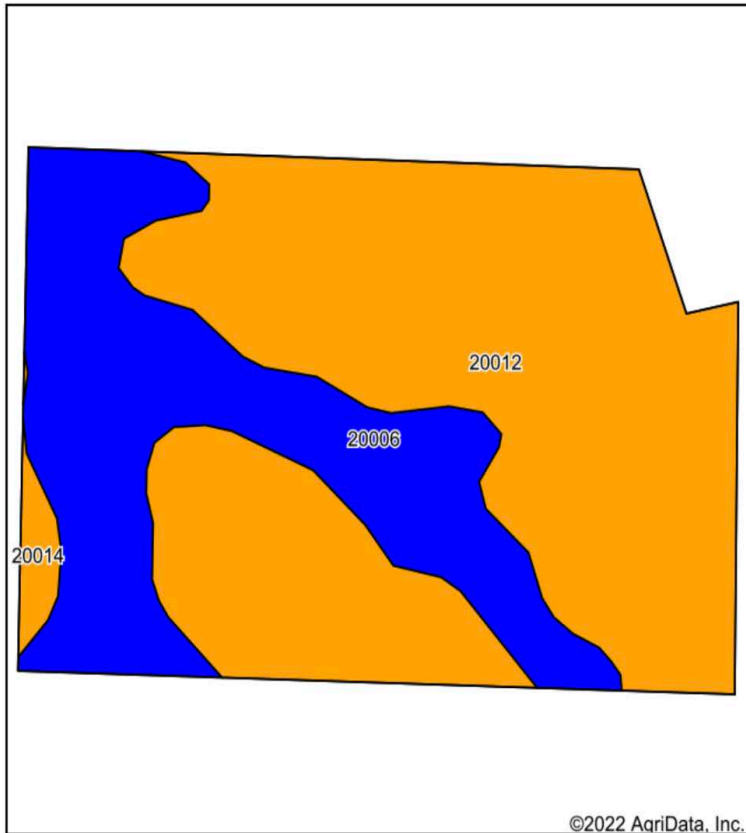
24-65N-35W
Nodaway County
Missouri



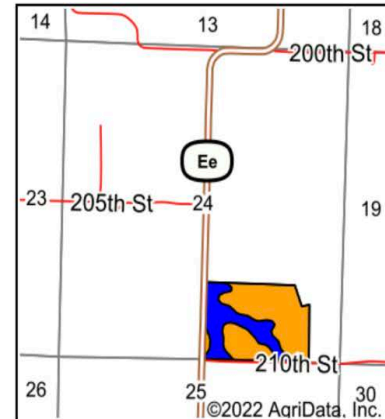
9/13/2022

1,047 Taxable Acres, Nodaway County, MO

Soil Map- 57.38 Acre Tract



Soils data provided by USDA and NRCS.



State: **Missouri**
 County: **Nodaway**
 Location: **24-65N-35W**
 Township: **Polk**
 Acres: **57.38**
 Date: **9/13/2022**



Maps Provided By:



Area Symbol: MO147, Soil Area Version: 23

Code	Soil Description	Acres	Percent of field	Non-Irr Class Legend	Non-Irr Class *c	*n NCCPI Overall	*n NCCPI Corn	*n NCCPI Small Grains	*n NCCPI Soybeans
20012	Shelby clay loam, dissected till plain, 5 to 9 percent slopes, eroded	37.81	65.9%		IIIe	78	78	59	58
20006	Sharpsburg silty clay loam, 2 to 5 percent slopes	18.64	32.5%		Ile	93	93	78	80
20014	Shelby clay loam, dissected till plain, 9 to 14 percent slopes, eroded	0.93	1.6%		IIIe	76	76	57	55
Weighted Average					2.68	*n 82.8	*n 82.8	*n 65.1	*n 65.1

*n: The aggregation method is "Weighted Average using all components"

*c: Using Capabilities Class Dominant Condition Aggregation Method

Soils data provided by USDA and NRCS.

1,047 Taxable Acres, Nodaway County, MO
FSA Aerial Map- 57.38 Acre Tract



**All Measurements are
For FSA Programs Only**

Wetland Determination Identifiers

- Restricted Use
- ▼ Limited Restrictions
- Exempt from Conservation Compliance Provisions

Disclaimer: Wetland identifiers do not represent the size, shape or specific determination of the area. Refer to your original determination (CPA-026 and attached maps)

Nodaway Co. FSA

All Crop Non Irrigated Unless Notated
C=Com Yel GR ; CW=Com Whe GR
SB=Soybn Com GR
HRW=Wht HRW GR ; SRW=Wht SRW GR
H=MIXFG IGS FG ; P=MIXFG IGS GZ
FG=MIXFG LGM FG
FTA=Grass FTA GZ ; LS=Grass FTA LS
AGM=MIXFG AGM FG ; ALF=Alfal FD
*Unless notated on Map

1 inch equals 268 feet

Program Year: 2023

Created: 9/1/2022

Flown: 2020-06-05

- clu
- crp
- plss

**Farm 4987
Tract 8303**



1,047 Taxable Acres, Nodaway County, MO
FSA 156EZ- 57.38 Acre Tract

Missouri
Nodaway

U.S. Department of Agriculture
Farm Service Agency

Report ID: FSA-156EZ

Abbreviated 156 Farm Record

FARM: 4987

Prepared: 11/25/22 9:09 AM

Crop Year: 2023

Page: 1 of 2

DISCLAIMER: This is data extracted from the web farm database. Because of potential messaging failures in MIDAS, this data is not guaranteed to be an accurate and complete representation of data contained in the MIDAS system, which is the system of record for Farm Records.

Operator Name

Farm Identifier

Farms Associated with Operator:

ARC/PLC G//F Eligibility: Eligible

CRP Contract Number(s): None

Farmland	Cropland	DCP Cropland	WBP	WRP	EWP	CRP Cropland	GRP	Farm Status	Number of Tracts
57.14	49.9	49.9	0.0	0.0	0.0	0.0	0.0	Active	1
State Conservation	Other Conservation	Effective DCP Cropland	Double Cropped	MPL/FWP	Native Sod				
0.0	0.0	49.9	0.0	0.0	0.0				
ARC/PLC									
PLC	ARC-CO		ARC-IC	PLC-Default		ARC-CO-Default		ARC-IC-Default	
NONE	CORN , SORGH		NONE	NONE		NONE		NONE	

Crop	Base Acreage	PLC Yield	CCC-505 CRP Reduction
CORN	16.6	81	0.00
GRAIN SORGHUM	0.3	66	0.00
Total Base Acres:	16.9		

Tract Number: 8303 Description N-6 S24-T65-R35

FSA Physical Location : Nodaway, MO

ANSI Physical Location: Nodaway, MO

BIA Range Unit Number:

HEL Status: HEL: conservation system is being actively applied

Wetland Status: Wetland determinations not complete

WL Violations: None

Farmland	Cropland	DCP Cropland	WBP	WRP	EWP	CRP Cropland	GRP
57.14	49.9	49.9	0.0	0.0	0.0	0.0	0.0
State Conservation	Other Conservation	Effective DCP Cropland	Double Cropped	MPL/FWP	Native Sod		
0.0	0.0	49.9	0.0	0.0	0.0		
Crop	Base Acreage	PLC Yield	CCC-505 CRP Reduction				
CORN	16.6	81	0.00				
GRAIN SORGHUM	0.3	66	0.00				
Total Base Acres:	16.9						

1,047 Taxable Acres, Nodaway County, MO

FSA 578- 57.38 Acre Tract

Nodaway, Missouri

FSA - 578 (09-13-16)

Farm Number: 4987

Operator Name and Address

REPORT OF COMMODITIES FARM AND TRACT DETAIL LISTING

PROGRAM YEAR: 2022

DATE: 11/25/2022

PAGE: 1

Original: ELL

Revision: _____

Cropland: 49.90

Farmland: 57.14

Tract Number	CLU/Field	Crop/Commodity	Var/Type	Int Use	Act Use	Irr. Pr.	Org Stat	Nat. Sod	C/C Stat	Rpt Unit	Rpt Qty	Det Qty	Crop Land	Field ID	Official/Measured	Planting Date	Planting Period	End Date
8303	1	SOYBN	COM	GR		N	C	N	I	A	47.94		Yes		N	05/25/2022	01	
Producer						Share	50.00	FSA Physical Location Nodaway, Missouri								NAP Unit 5454	Signature Date 07/12/2022	
						50.00												
2		GRASS	FTA	LS		N	C	N	I	A	1.96		Yes		N	03/03/2003	01	
Producer						Share	50.00	FSA Physical Location Nodaway, Missouri								NAP Unit 5454	Signature Date 07/12/2022	
						50.00												

Tract 8303 Summary

PP	Cr/Co	Var/Type	Int/Use	Irr/Pr	Rpt/Unit	Rpt/Qty	PP	Cr/Co	Var/Type	Int/Use	Irr/Pr	Rpt/Unit	Rpt/Qty	PP	Cr/Co	Var/Type	Int/Use	Irr/Pr	Rpt/Unit	Rpt/Qty
01	SOYBN	COM	GR	N	A	47.94	01	GRASS	FTA	LS	N	A	1.96							
Photo Number/Legal Description: N-6 S24-T65-R35																				
Cropland: 49.90						Reported on Cropland: 49.90						Difference: 0.00						Reported on Non-Cropland: 0.00		