



Area Homes Specialists

Setting the trend for how Real Estate is sold in the Midwest.

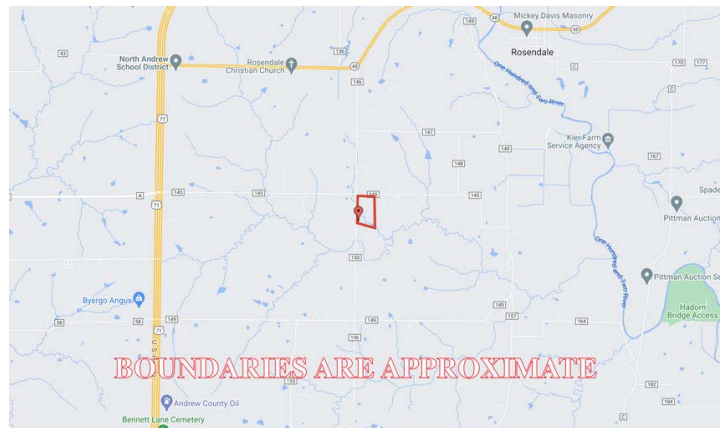
www.BarnesRealty.com

**18156 Hwy 59
Mound City, MO 64470
(660) 442-3177**

**1711 Oregon
Hiawatha, KS 66434
(785) 742-4580**

**1708 Prairie View Rd, Suite B
Platte City, MO 64079
(816) 219-3010**

Home & 25 Acres, Andrew County, MO



Physical Address: 7243 County Road 150, Rosendale, MO 64483

Price: \$405,000.00
Sq. Ft: Approx. 2,400
Build Date: 1986

Bedrooms: 3 possibly 4
Basement: Full
Water: Well

Baths: 2.5
Garage: 2-car attached and 40 x 60 insulated shop
Septic: Septic system

Taxes: 2022 Taxes were \$2,344.05 for Home & 25.4 taxable acres

Additional Features:

- Concrete Foundation with asphalt shingle roof
- Large butcher block island in kitchen
- 1-2 acre pond with mature trees and PRIVACY!

AGENT: Nathan Kneib
(816) 271-3246 or Nathan@BarnesRealty.com

BROKER PARTICIPATION:

Barnes Realty Company, as listing Broker, will gladly and fully cooperate with most licensed Real Estate Brokers to obtain a sale of the property on terms satisfactory to the current Owners. Brokers should call our office for details of our Co-Brokerage Policy.

Setting the trend for how Real Estate is sold in the Midwest.

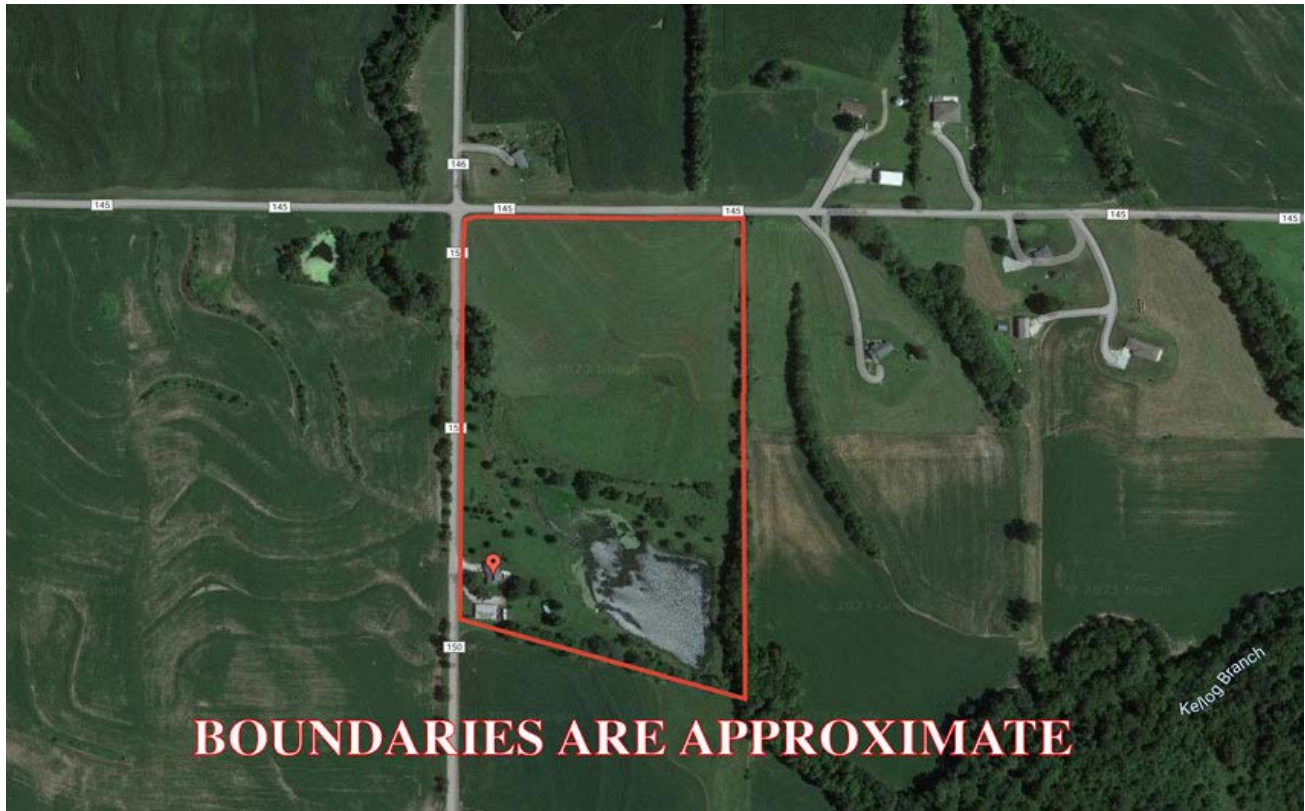
This information is thought to be accurate; however, it is subject to verification and no liability for error and omissions is assumed. Barnes Realty has made every effort to present accurate information on the property presented. Most of the information comes from outside sources: County/Government/Seller and human error can occur. It's the Buyer's responsibility to satisfy himself with the information presented and to determine the information to be true and accurate and the property to be suited for his intended use. The listing may be withdrawn with or without approval. The Seller further reserves the right to reject any and all offers.

All inquiries, inspections, appointments, and offers must be sent through:

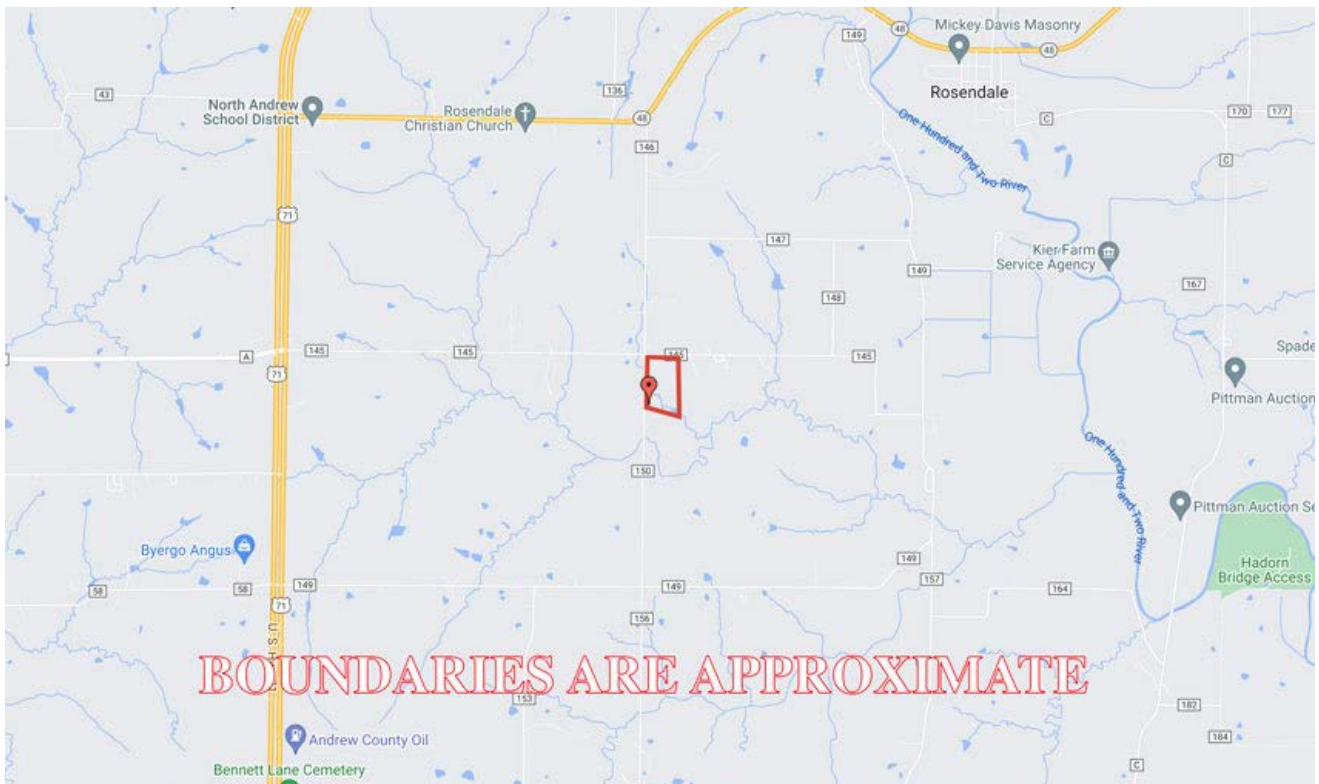
RICK BARNES, BROKER, BARNES REALTY COMPANY, 18156 HWY 59, MOUND CITY, MO 64470 PHONE NUMBER: 1-660-442-3177.

Aerial & Interior Photos Coming Soon!

Home & 25 Acres, Andrew County, MO
Google Aerial Map

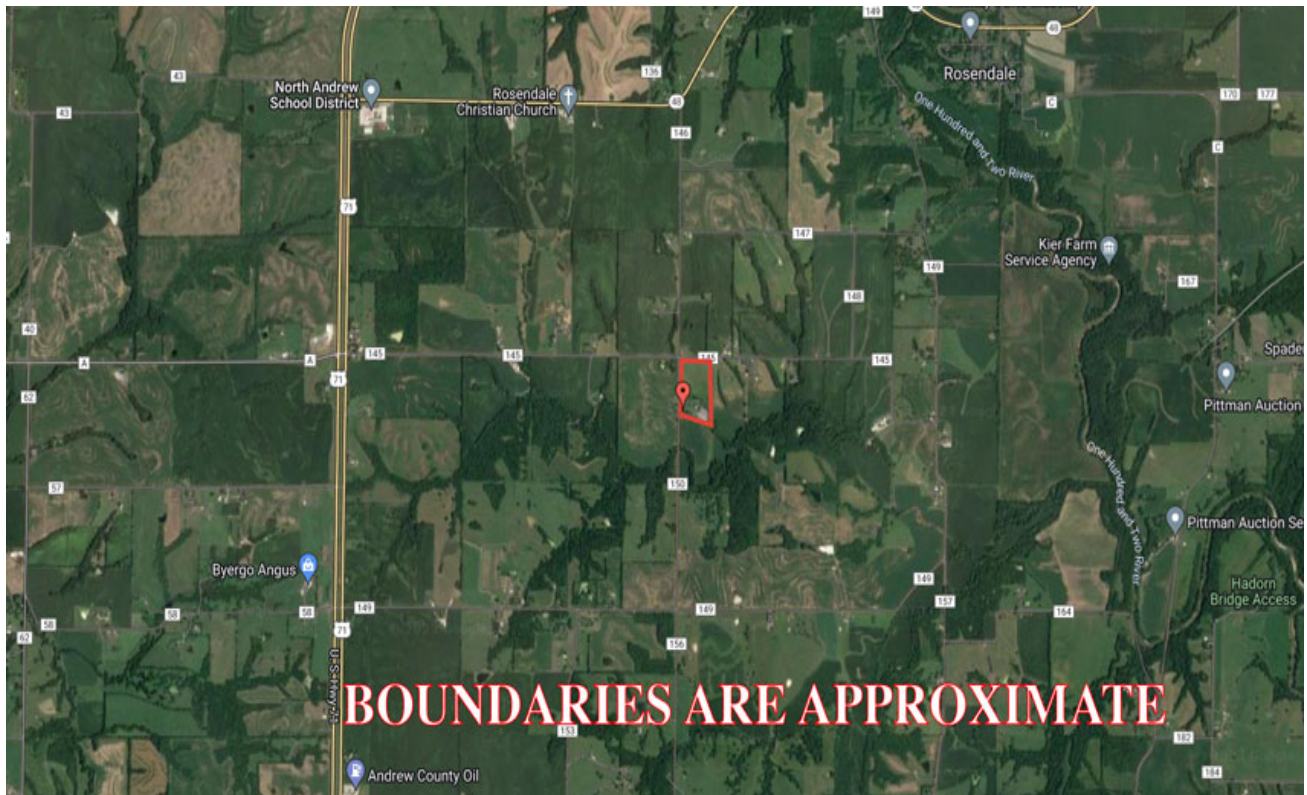


Driving Map

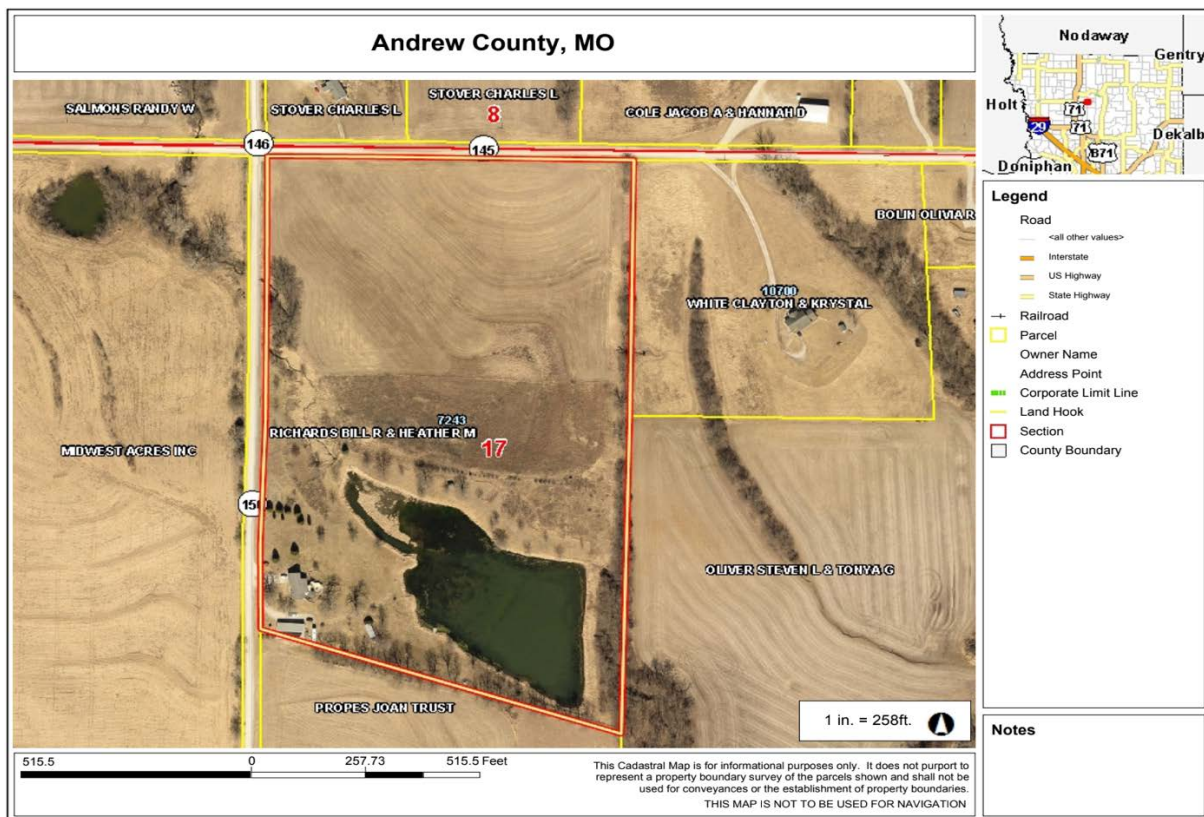


Home & 25 Acres, Andrew County, MO

General Location Map



Tax Map



PHOTOS PROVIDED BY: RICK BARNES, BROKER, BARNES REALTY COMPANY, 18156 HWY 59, MOUND CITY, MO 64470 PHONE NUMBER: 1-660-442-3177.