



Real Estate Sales Specialists

Setting the trend for how Real Estate is sold in the Midwest.

www.BarnesRealty.com

18156 Hwy 59
Mound City, MO 64470
(660) 442-3177

1711 Oregon
Hiawatha, KS 66434
(785) 742-4580

1708 Prairie View Rd, Suite B
Platte City, MO 64079
(816) 219-3010

5 Acre +/- Riverfront Lots, Atchison County, MO

These tracts are located right on the Missouri River and are in prime hunting location!

LOCATION:

These lots are located Southwest of Hamburg, IA. Head west out of Hamburg on Highway 333/310th St/J64 for approx. 3.75 miles and curve south onto V Road. In about 2 miles the road will curve to the east, once you get to 250th Ave, head south and you run right into the lots.

PRICE:

\$52,500.00 (East Lot)
2 West Lots \$45,000.00/Each

IMPROVEMENTS:

These river lots are unimproved.

LISTING AGENT:

Garrett Barnes
(660) 851-1495 or
Garrett@BarnesRealty.com



BROKER PARTICIPATION:

Barnes Realty Company, as listing Broker, will gladly and fully cooperate with most licensed Real Estate Brokers to obtain a sale of the property on terms satisfactory to the current Owners.

Setting the trend for how Real Estate is sold in the Midwest.

This information is thought to be accurate; however it is subject to verification and no liability for error and omissions is assumed. Barnes Realty has made every effort to present accurate information on the property presented. Most of the information comes from outside sources: County/Government/Seller and human error can occur.

It's the Buyer's responsibility to satisfy him self with the information presented and to determine the information to be true and accurate and the property to be suited for his intended use. The listing may be withdrawn with or without approval. The Seller further reserves the right to reject any and all offers.

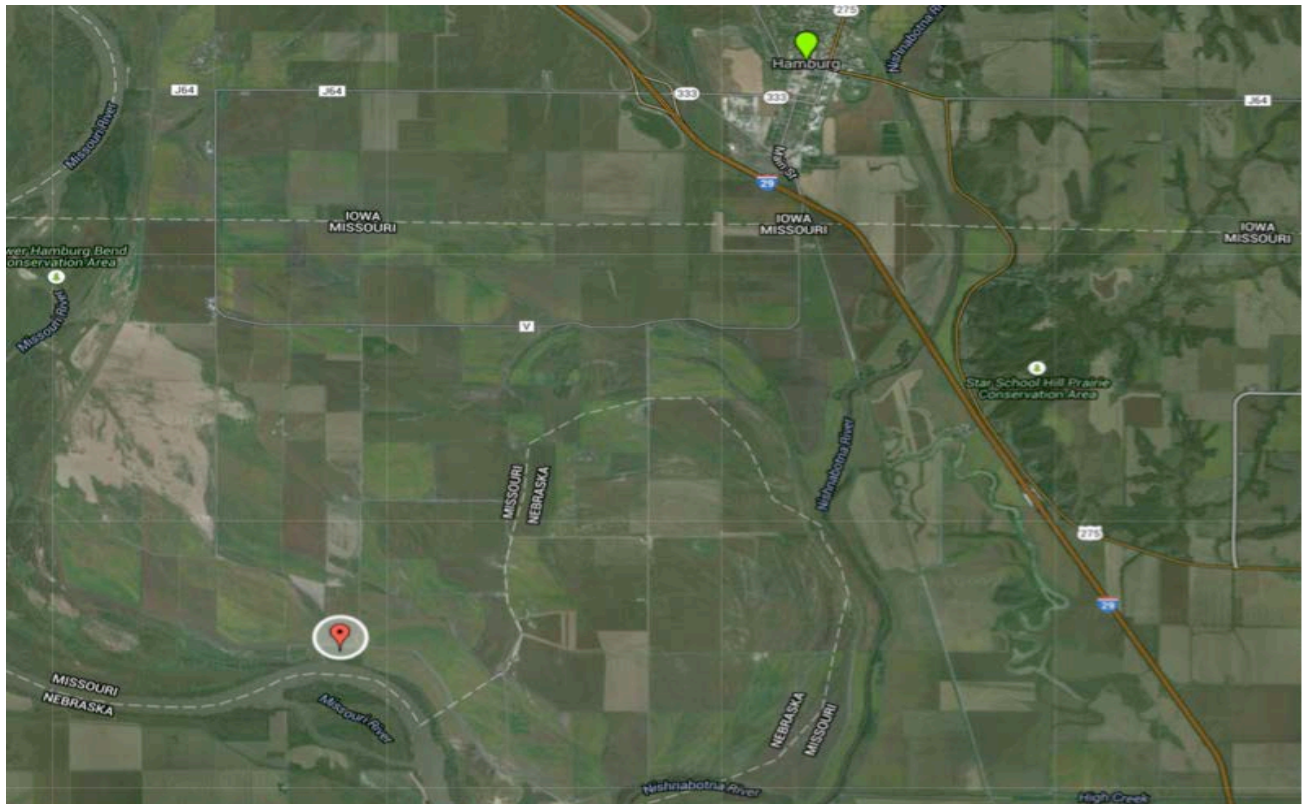
All inquiries, inspections, appointments, and offers must be sent through:

RICK BARNES, BROKER, BARNES REALTY COMPANY, 18156 HWY 59, MOUND CITY, MO 64470 PHONE NUMBER: 1-660-442-3177.

5 Acre +/- Riverfront Lots, Atchison County, MO
Google Aerial



General Location



PHOTOS PROVIDED BY: RICK BARNES, BROKER, BARNES REALTY COMPANY, 18156 HWY 59, MOUND CITY, MO 64470 PHONE NUMBER: 1-660-442-3177.

A map of the Lower Hamburg Bend area. The Missouri River flows from the top left towards the bottom right. A green shaded region is labeled "Lower Hamburg Bend...". To the right of the river, the state boundary between Iowa and Missouri is indicated by a dashed line. The city of Hamburg is marked with a green pin. Major roads include US Highway 75 running vertically on the left, and Interstate 29 running diagonally from the top right to the bottom right. Other roads shown include S 70th Rd, S 72nd Rd, S 101st Rd, N Road, K Rd, 310 St, Bluff Rd, and J64. A red pin is located on the riverbank near the bottom center. The Star S Hill Park Conservation Area is visible on the far right.

[illegible]

PHOTOS PROVIDED BY: RICK BARNES, BROKER, BARNES REALTY COMPANY, 18156 HWY 59, MOUND CITY, MO 64470 PHONE NUMBER: 1-660-442-3177.

5 Acre +/- Riverfront Lots, Atchison County, MO
Aerial Photos



5 Acre +/- Riverfront Lots, Atchison County, MO

