



## We Sell Big Lake!

*Setting the trend for how Real Estate is sold in the Midwest.*

[www.BarnesRealty.com](http://www.BarnesRealty.com)

18156 Hwy 59  
Mound City, MO 64470  
(660) 442-3177

1711 Oregon  
Hiawatha, KS 66434  
(785) 742-4580

1708 Prairie View Rd, Suite B  
Platte City, MO 64079  
(816) 219-3010

### *#4 Lot 9 Danbury Addition, Big Lake, MO*



**This 2-bedroom elevated cabin located on a dead-end road at one of the best locations on the lake! Includes CENTRAL AIR/HEAT so it's the PERFECT, easy to maintain, getaway spot ALL YEAR ROUND! Don't wait to call me for a showing as this may not last long!**

**Price:** \$98,500 OBO!

**Bathrooms:** 1

**Taxes:** 2022 taxes were \$693.49

**Lot Size:** Approx. 50' x 148'

**Exterior:** Vinyl siding

**Water:** City

**Heat/Cool:** Central

**School District:** Craig-III

**Other Features:**

Extra Camper Hookup!

**LISTING AGENT:**

Alyssa Barnes (660) 851-1171 or [alyssa@barnesrealty.com](mailto:alyssa@barnesrealty.com)

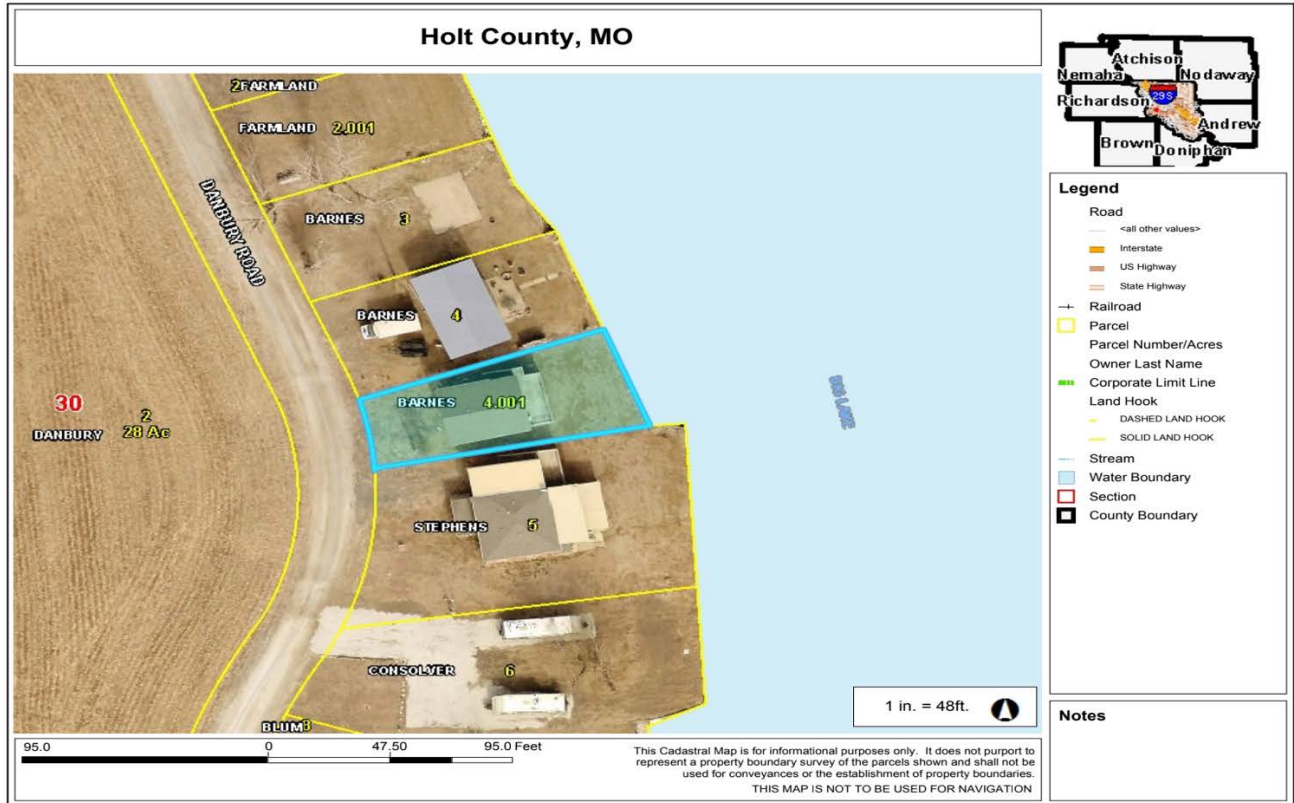
*Setting the trend for how Real Estate is sold in the Midwest.*

This information is thought to be accurate; however, it is subject to verification and no liability for error and omissions is assumed. Barnes Realty has made every effort to present accurate information on the property presented. Most of the information comes from outside sources: County/Government/Seller and human error can occur. It's the Buyer's responsibility to satisfy himself with the information presented and to determine the information to be true and accurate and the property to be suited for his intended use. The listing may be withdrawn with or without approval. The Seller further reserves the right to reject any and all offers.

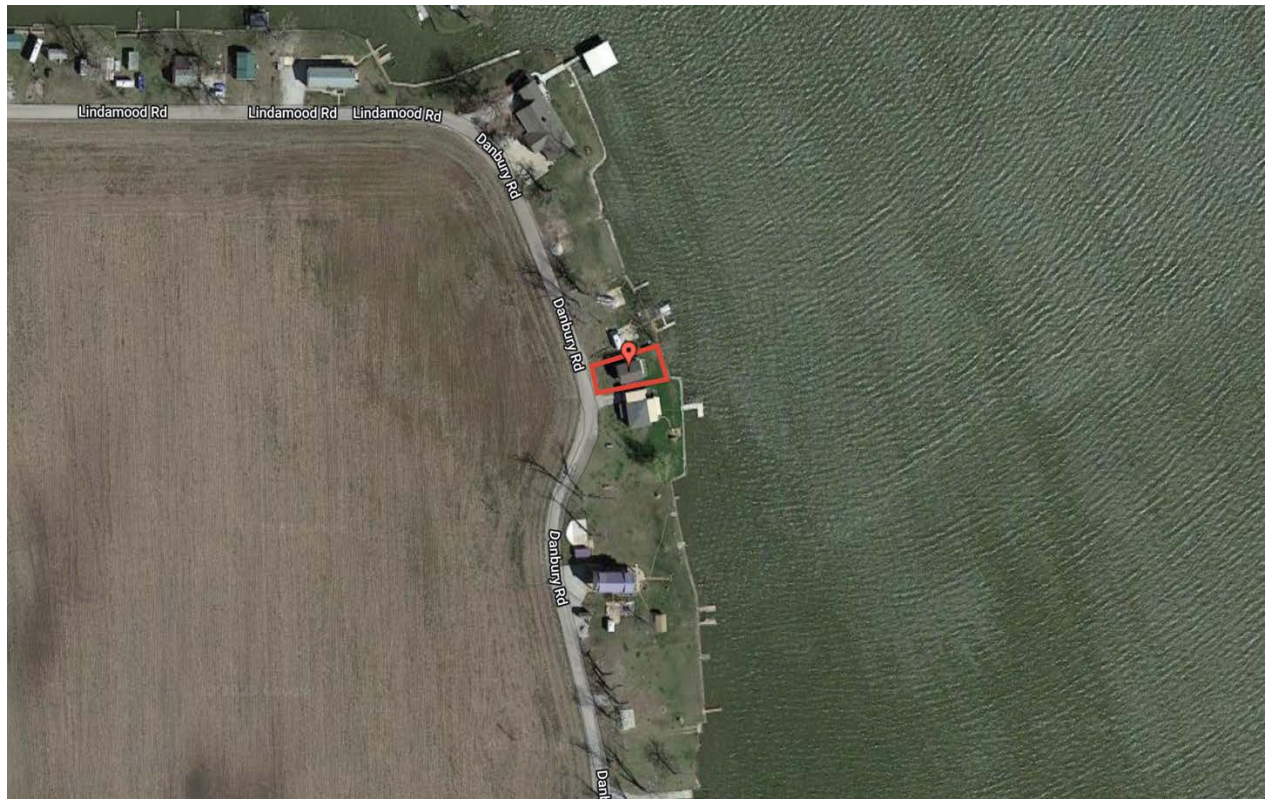
All inquiries, inspections, appointments, and offers must be sent through:

**RICK BARNES, BROKER, BARNES REALTY, 18156 HWY 59, MOUND CITY, MO 64470 PHONE NUMBER: 660-442-3177.**

# #4 Lot 9 Danbury Addition, Big Lake, MO Tax Map



## Google Aerial Map





**#4 Lot 9 Danbury Addition, Big Lake, MO**  
**Photos**



**#4 Lot 9 Danbury Addition, Big Lake, MO**  
**Photos**

