



# 54 +/- ACRES, ST. CLAIR COUNTY, MO

*For Sale*

Here is 54+/- acres of prime hunting ground right next to the osage river. Very thick timber coverage perfect for natural wildlife. The property is located five minutes west from Monegaw Springs, 15 minutes west of Osceola and highway 13.



18156 Hwy 59 Mound  
City, MO 64470  
(660)-442-3177

1711 Oregon Hiawatha,  
KS 66434  
(785)-742-4580

1708 Prairie View Rd, Suite  
B Platte City, MO 64079  
(816)-219-3010

[www.BarnesRealty.com](http://www.BarnesRealty.com)



# PROPERTY FEATURES

**Price:**

\$4,500.00/taxable acre or  
\$243,000.00 total

**Real Estate Taxes:**

TBD

**FSA Info:**

Shown Below

**Location:**

Tract is 5 minutes west from Monegaw Springs,  
15 minutes west of Osceola and highway 13.

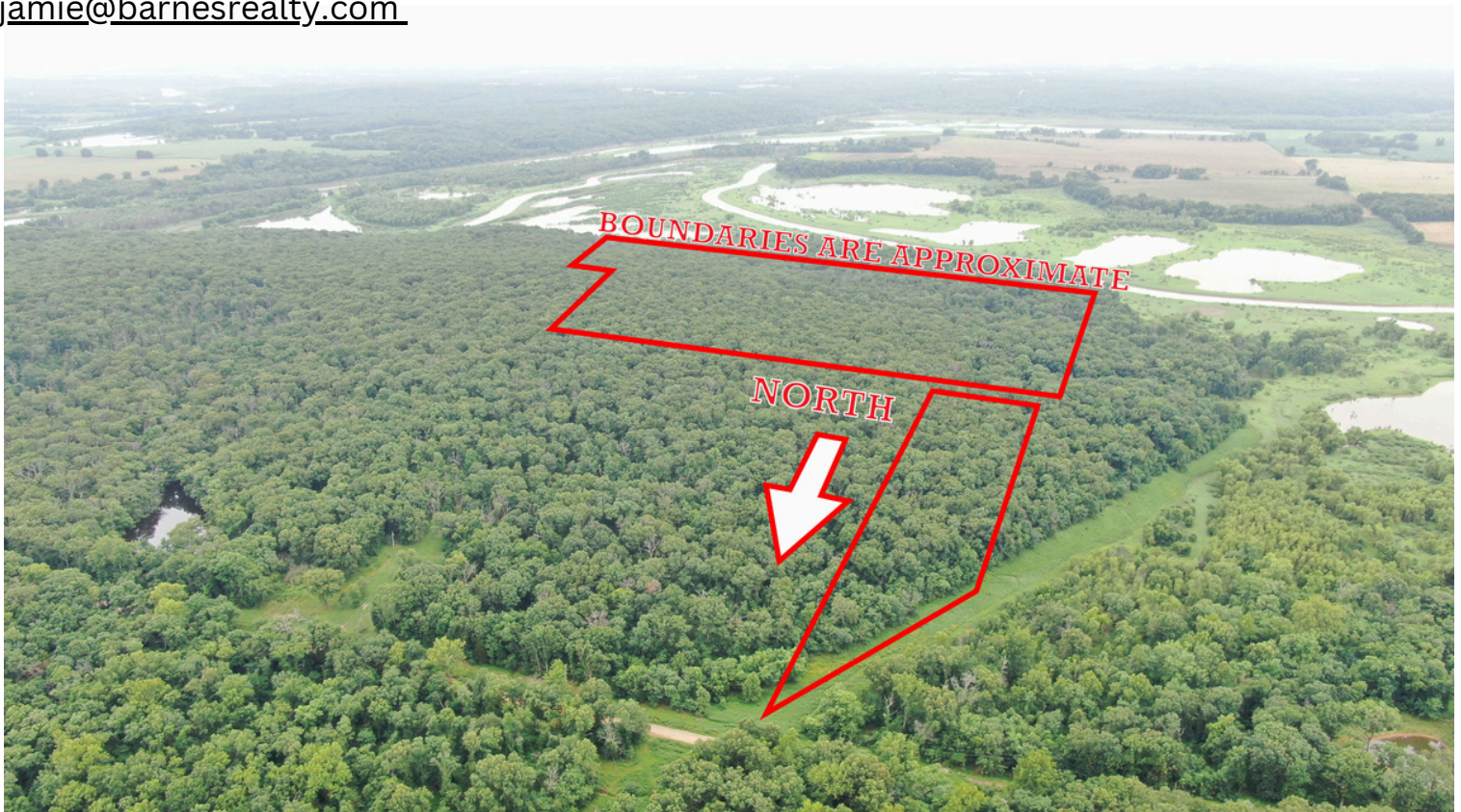
**Improvements:**

No improvements

**Listing Agent:**

Garrett Barnes: (660) 851-1495 or  
[garrett@barnesrealty.com](mailto:garrett@barnesrealty.com)

Jamie Barnes: (660) 851-1125 or  
[jamie@barnesrealty.com](mailto:jamie@barnesrealty.com)



Setting the trend for how Real Estate is sold in the Midwest.

This information is thought to be accurate; however, it is subject to verification and no liability for error and omissions is assumed. Barnes Realty has made every effort to present accurate information on the property presented. Most of the information comes from outside sources: County/Government/Seller and human error can occur. It's the Buyer's responsibility to satisfy himself with the information presented and to determine the information to be true and accurate and the property to be suited for his intended use. The listing may be withdrawn with or without approval. The Seller further reserves the right to reject any and all offers. All inquiries, inspections, appointments, and offers must be sent through:

RICK BARNES, BROKER, BARNES REALTY COMPANY, 18156 HWY 59, MOUND CITY, MO 64470 PHONE NUMBER: 1-660-442-3177.

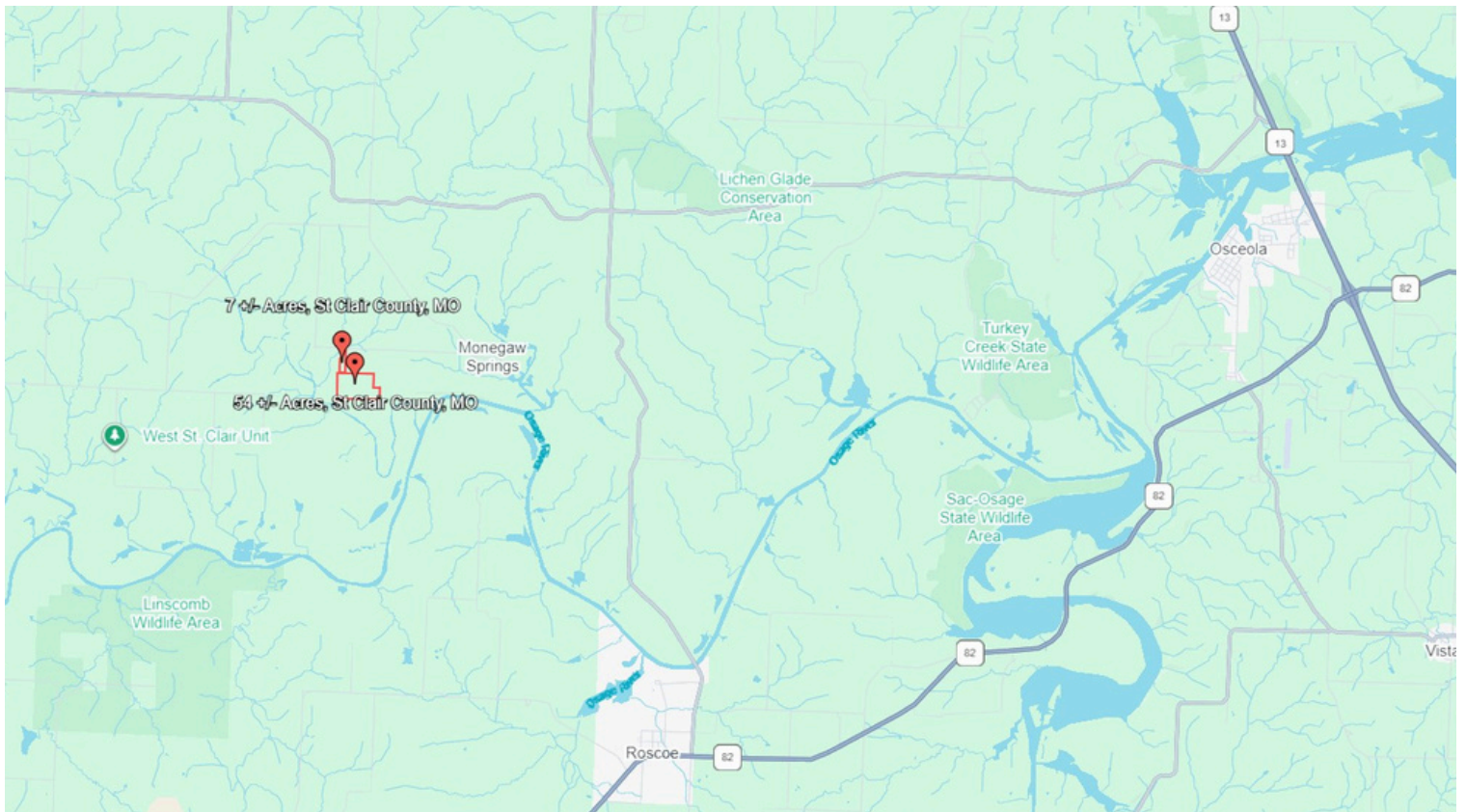
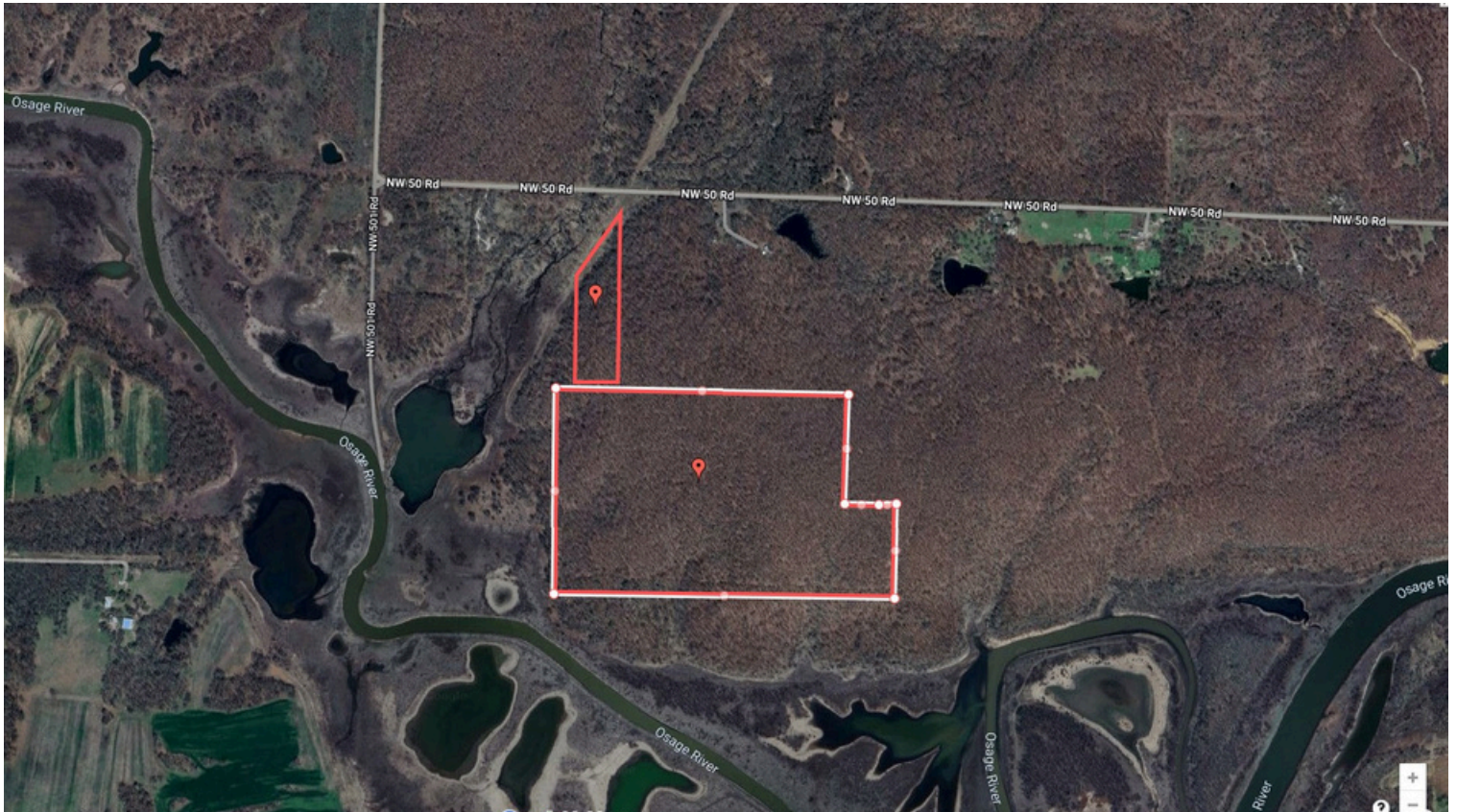


# PHOTOS



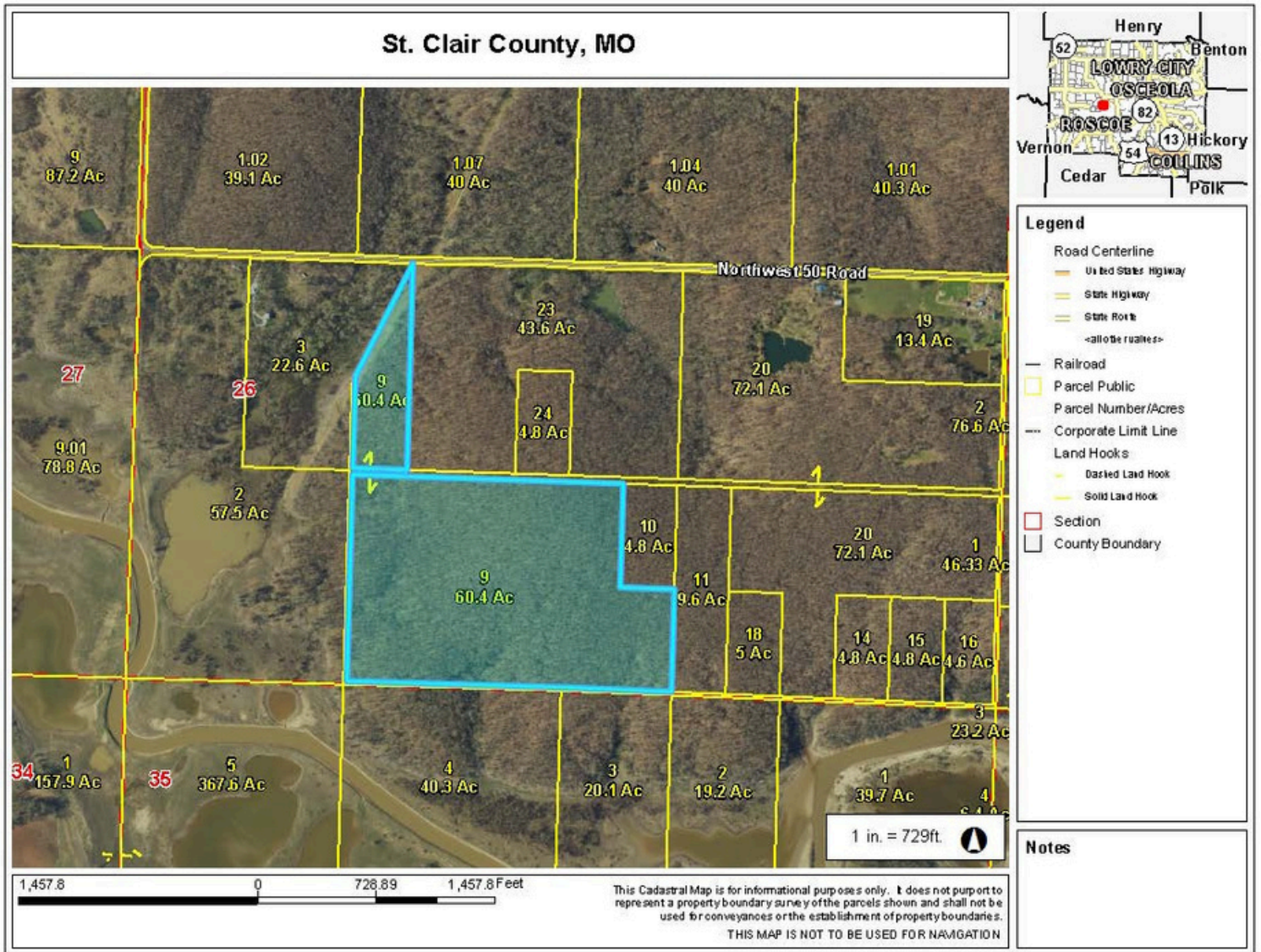


# AERIAL PHOTOS





# TAX MAP





# SURETY MAP

Aerial Map



www.BarnesRealty.com  
(800) 648-3177

Maps Provided By:



© AgriData, Inc. 2023 www.AgriDataInc.com

Boundary Center: 38° 1' 37.33, -93° 52' 3.5

0ft 834ft 1668ft

26-38N-27W  
St. Clair County  
Missouri



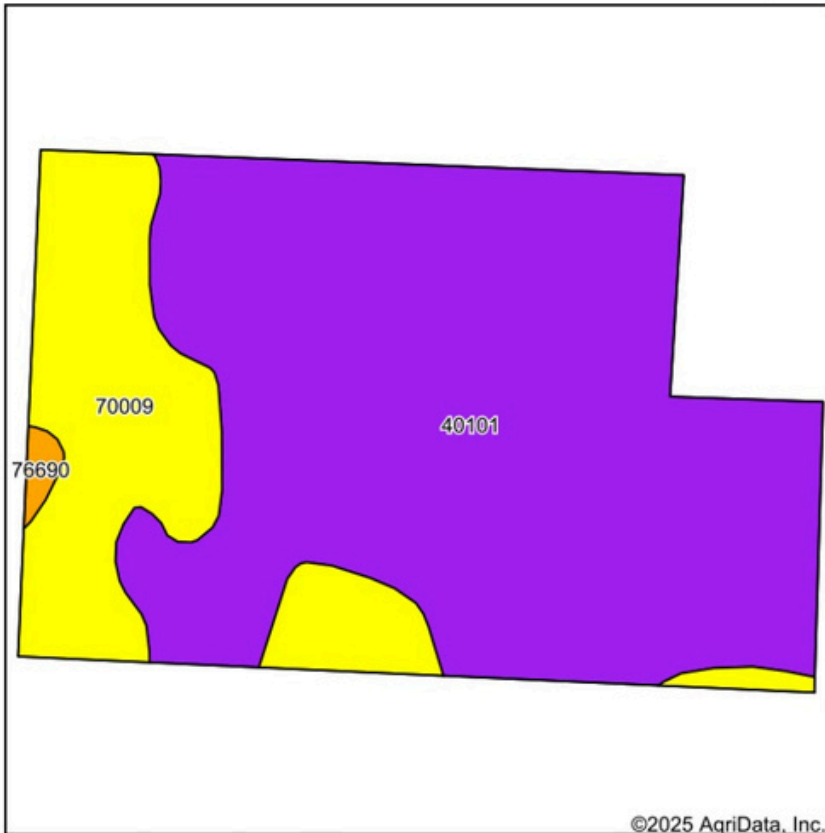
8/8/2025

Field borders provided by Farm Service Agency as of 5/21/2008.

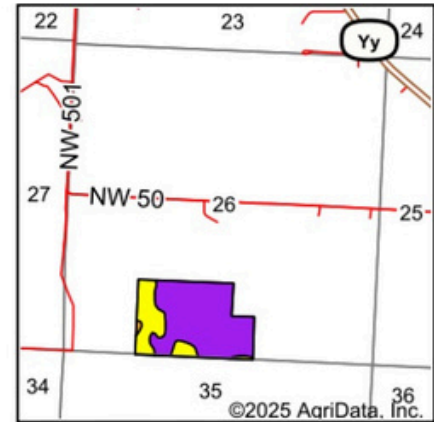


# SOIL MAP

## Soils Map



Soils data provided by USDA and NRCS.



State: **Missouri**  
 County: **St. Clair**  
 Location: **26-38N-27W**  
 Township: **Osage**  
 Acres: **54**  
 Date: **8/8/2025**



Maps Provided By:



Area Symbol: MO185, Soil Area Version: 28

Code	Soil Description	Acres	Percent of field	Non-Irr Class Legend	Non-Irr Class *c	*n NCCPI Overall	*n NCCPI Corn	*n NCCPI Small Grains	*n NCCPI Soybeans
40101	Hector fine sandy loam, 5 to 25 percent slopes, stony	41.04	76.0%		Vlls	26	24	25	14
70009	Goss gravelly silt loam, 8 to 15 percent slopes	12.60	23.3%		IVe	57	56	44	39
76690	Moniteau silt loam, 0 to 2 percent slopes, rarely flooded	0.36	0.7%		IIIw	83	82	71	70
Weighted Average					6.27	*n 33.6	*n 31.9	*n 29.7	*n 20.2

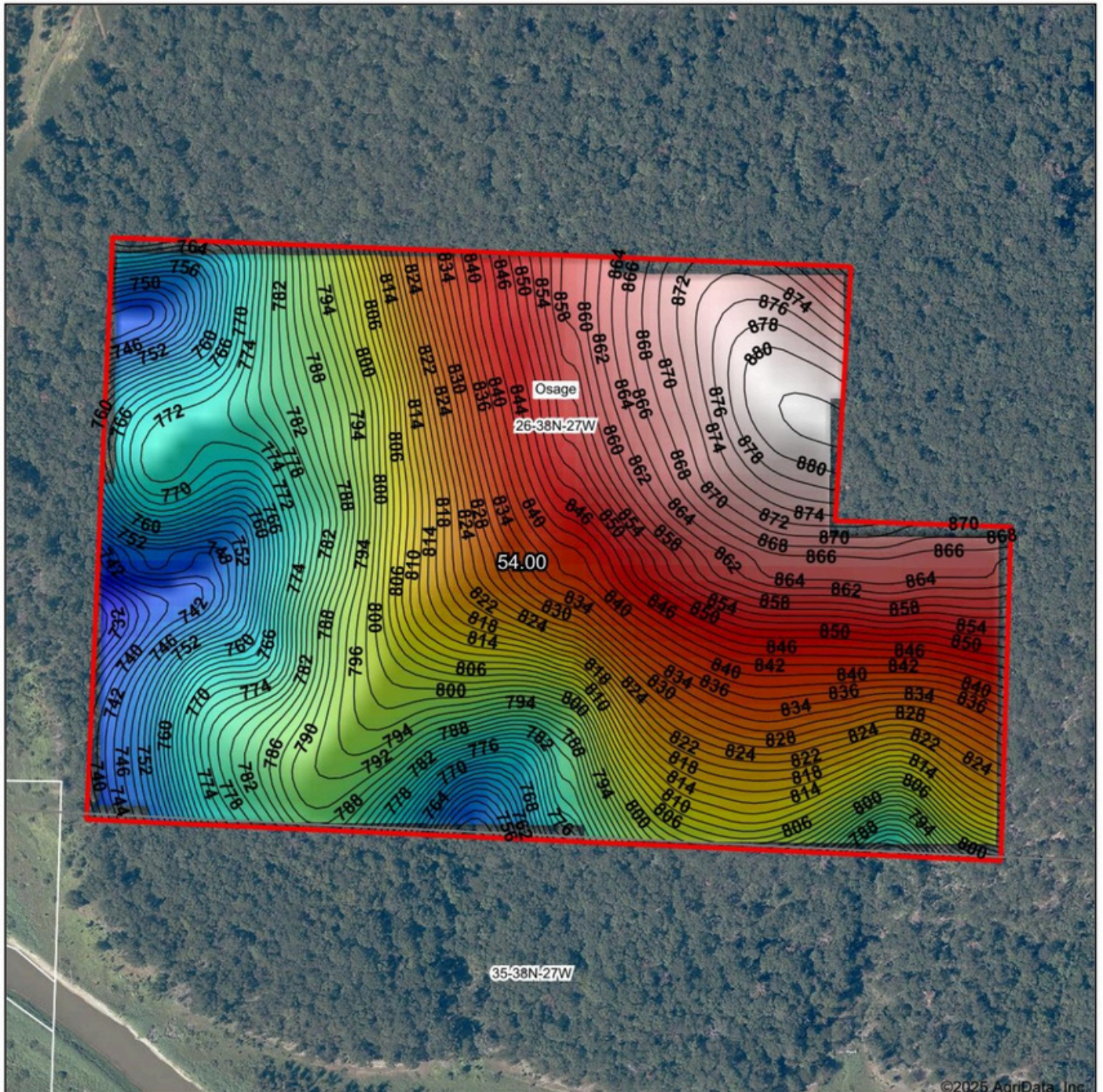
\*n: The aggregation method is "Weighted Average using all components"

\*c: Using Capabilities Class Dominant Condition Aggregation Method



# TOPOGRAPHY MAP

## Topography Hillshade



©2025 AgriData, Inc.



Source: USGS 10 meter dem

Interval(ft): 2

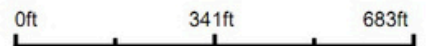
Min: 730.2

Max: 882.6

Range: 152.4

Average: 812.8

Standard Deviation: 39.34 ft



8/8/2025

26-38N-27W  
St. Clair County  
Missouri

Boundary Center: 38° 1' 37.33, -93° 52' 3.5



Maps Provided By:



© AgriData, Inc. 2023 www.AgriDataInc.com

Field borders provided by Farm Service Agency as of 5/21/2008.