

**BIDDING ENDS FEBRUARY 26TH @ 11:00 AM**



**66.95 TILLABLE ACRES,  
HARRISON COUNTY, MO**  
*For Lease*

Here is 66.95 acres of tillable upland with a good location, just southeast of Bethany, MO. The high bidder secures a two year lease on the property to be paid upfront in March of each year.

Available for the 2025-26 crop seasons

18156 Hwy 59 Mound  
City, MO 64470  
(660)-442-3177



1711 Oregon Hiawatha,  
KS 66434  
(785)-742-4580

[Barnesrealty.com](http://Barnesrealty.com)

# PROPERTY FEATURES

**Online Auction through February 26, 2025**  
**Bidding ends at 11:00 AM**

**Opening Bid:**

\$150.00/Tillable acre

**Tillable Acres:**

66.95 acres. Bidder hereby, agrees that his bid is based on his own tillable acres calculations

**Listing Agent:**

Jamie Barnes (660)-851-1125 or  
Jamie@BarnesRealty.com

**Location:**

6 miles southeast of Bethany, MO

**FSA Information**

Coming Soon

**Surety Maps:**

Attached below



Setting the trend for how Real Estate is sold in the Midwest.

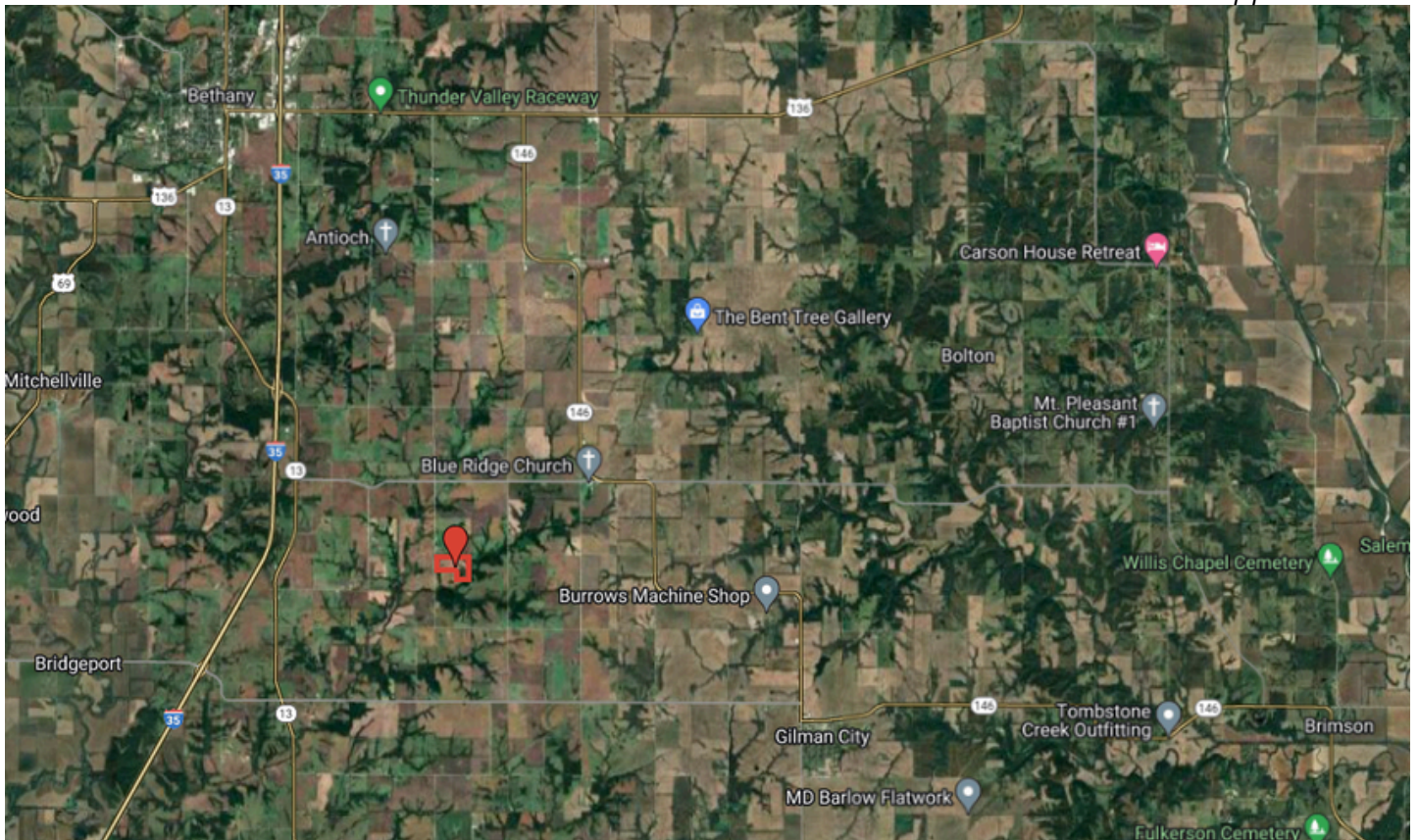
This information is thought to be accurate; however, it is subject to verification and no liability for error and omissions is assumed. Barnes Realty has made every effort to present accurate information on the property presented. Most of the information comes from outside sources: County/Government/Seller and human error can occur. It's the Buyer's responsibility to satisfy himself with the information presented and to determine the information to be true and accurate and the property to be suited for his intended use. The listing may be withdrawn with or without approval. The Seller further reserves the right to reject any and all offers. All inquiries, inspections, appointments, and offers must be sent through:

RICK BARNES, BROKER, BARNES REALTY COMPANY, 18156 HWY 59, MOUND CITY, MO 64470 PHONE NUMBER: 1-660-442-3177.

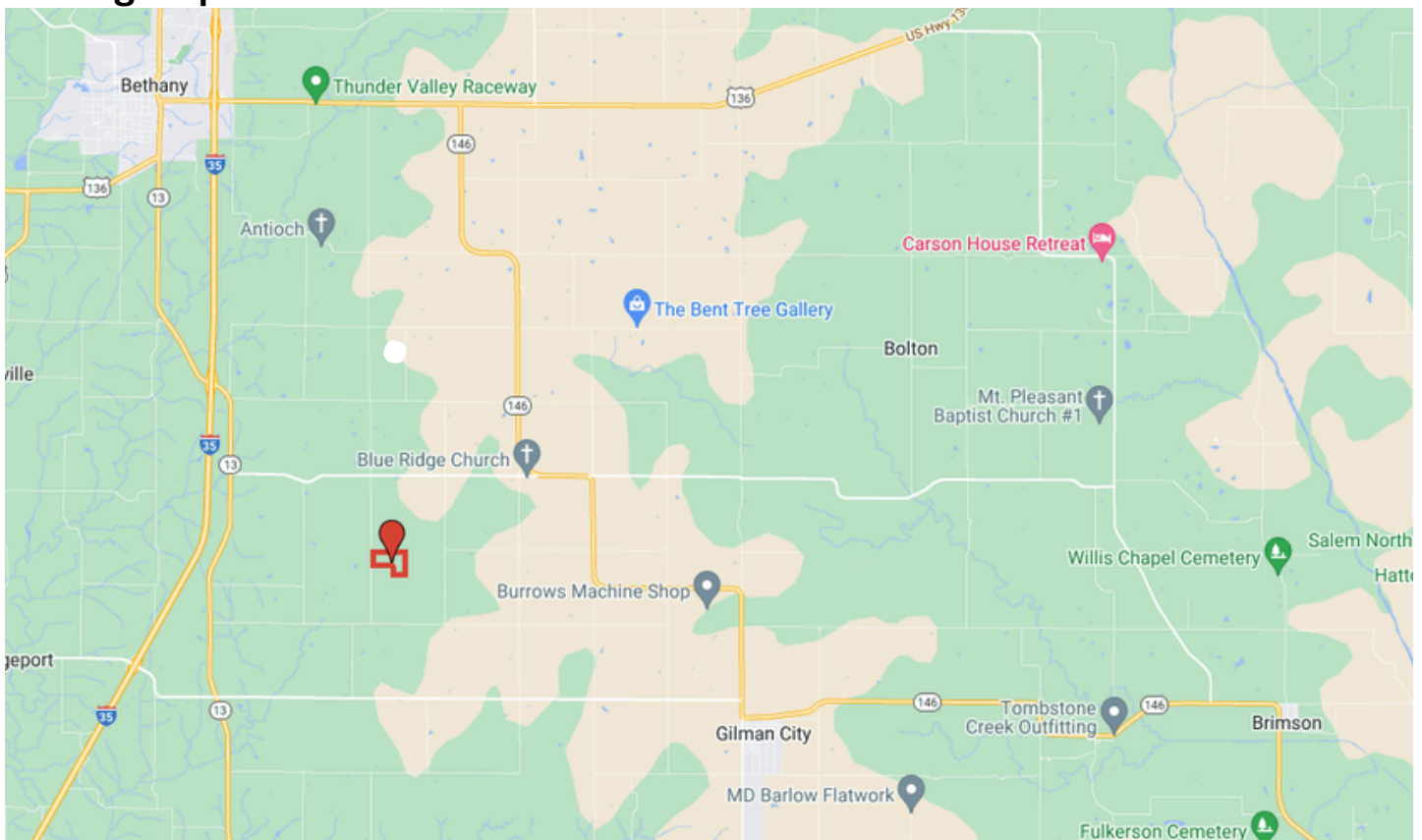
# AERIAL MAPS

## General Location Map:

*\*Boundaries are approximate\**

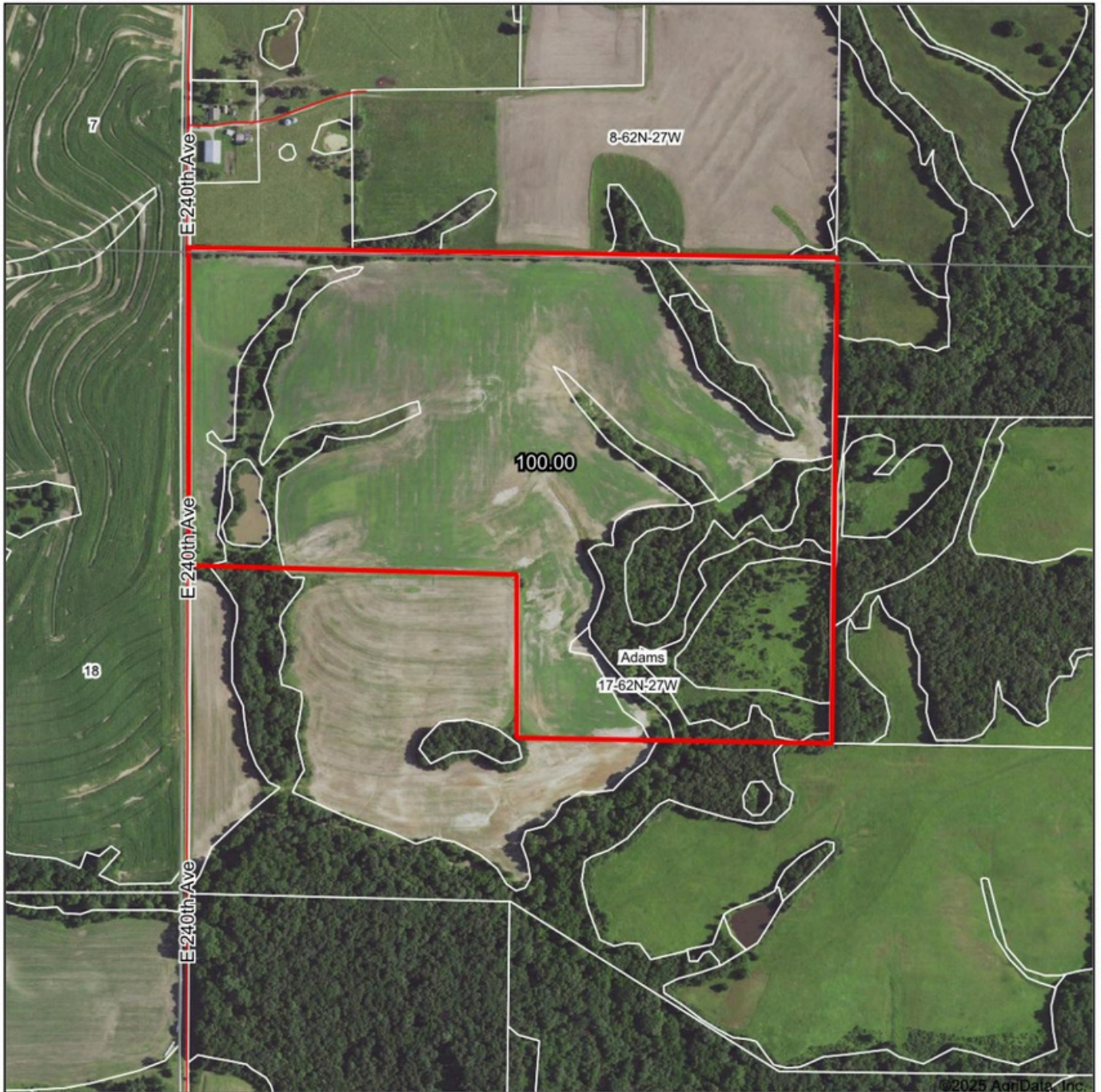


## Driving Map:



# SURETY MAPS

## Aerial Map



©2025 AgriData, Inc.

Boundary Center: 40° 10' 29.2, -93° 58' 4.96

0ft 638ft 1275ft



www.BarnesRealty.com  
(800) 648-3177

Maps Provided By:



© AgriData, Inc. 2023 www.AgriDataInc.com

17-62N-27W  
Harrison County  
Missouri

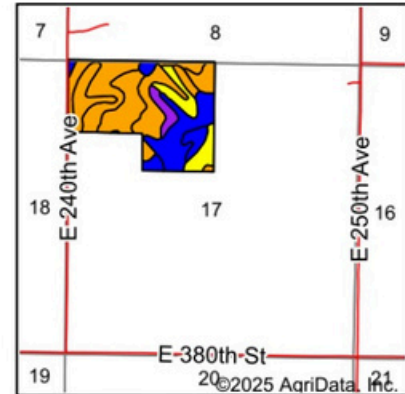
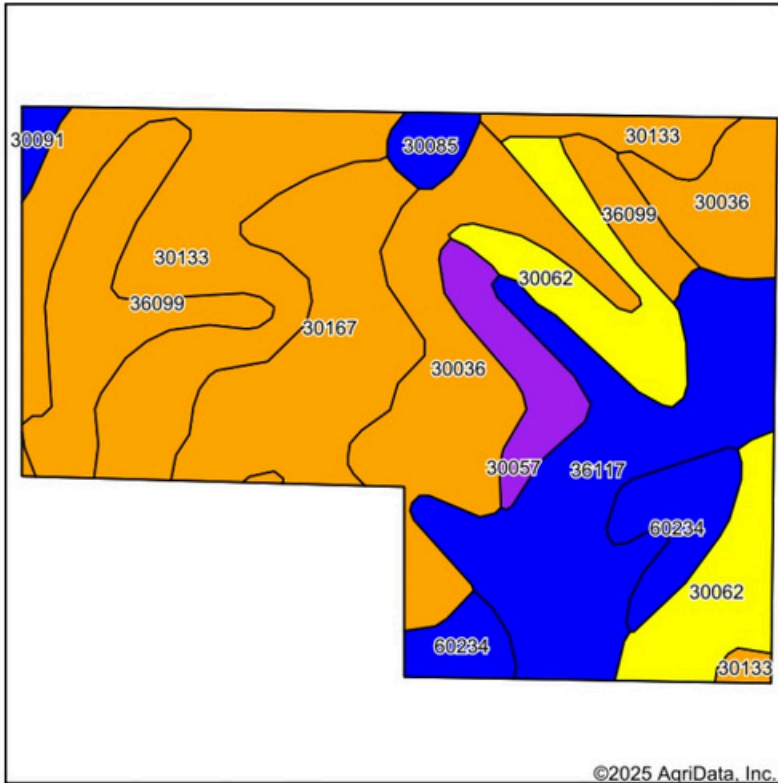


2/5/2025

Field borders provided by Farm Service Agency as of 5/21/2008.

# SURETY MAPS

## Soils Map



State: **Missouri**  
 County: **Harrison**  
 Location: **17-62N-27W**  
 Township: **Adams**  
 Acres: **100**  
 Date: **2/5/2025**



Maps Provided By:



Soils data provided by USDA and NRCS.

©2025 AgriData, Inc.

Area Symbol: MO081, Soil Area Version: 28

Code	Soil Description	Acres	Percent of field	Non-Irr Class Legend	Non-Irr Class *c	*n NCCPI Overall	*n NCCPI Corn	*n NCCPI Small Grains	*n NCCPI Soybeans
30133	Lamoni clay loam, 5 to 9 percent slopes, eroded	20.31	20.3%		IIIe	59	59	53	47
36117	Nodaway silt loam, heavy till, 0 to 2 percent slopes, occasionally flooded	17.06	17.1%		IIw	80	80	74	78
30036	Armstrong loam, 5 to 9 percent slopes	16.89	16.9%		IIIe	56	52	56	52
30167	Pershing silt loam, 2 to 5 percent slopes	12.73	12.7%		IIIe	74	74	70	59
30062	Gara loam, 9 to 14 percent slopes	11.14	11.1%		IVe	71	71	60	59
36099	Zook-Colo silty clay loams, 1 to 3 percent slopes, frequently flooded	10.50	10.5%		IIIw	67	67	58	57
60234	Weller silt loam, 2 to 5 percent slopes	5.45	5.4%		Ile	73	73	65	61
30057	Gara loam, 14 to 18 percent slopes	3.79	3.8%		VIe	66	66	56	52
30085	Grundy silt loam, 2 to 5 percent slopes	1.47	1.5%		Ile	74	74	67	64
30091	Grundy silty clay loam, 2 to 5 percent slopes, moderately eroded	0.66	0.7%		Ile	74	74	61	65
<b>Weighted Average</b>					<b>2.98</b>	<b>*n 67.5</b>	<b>*n 66.8</b>	<b>*n 61.6</b>	<b>*n 58.4</b>

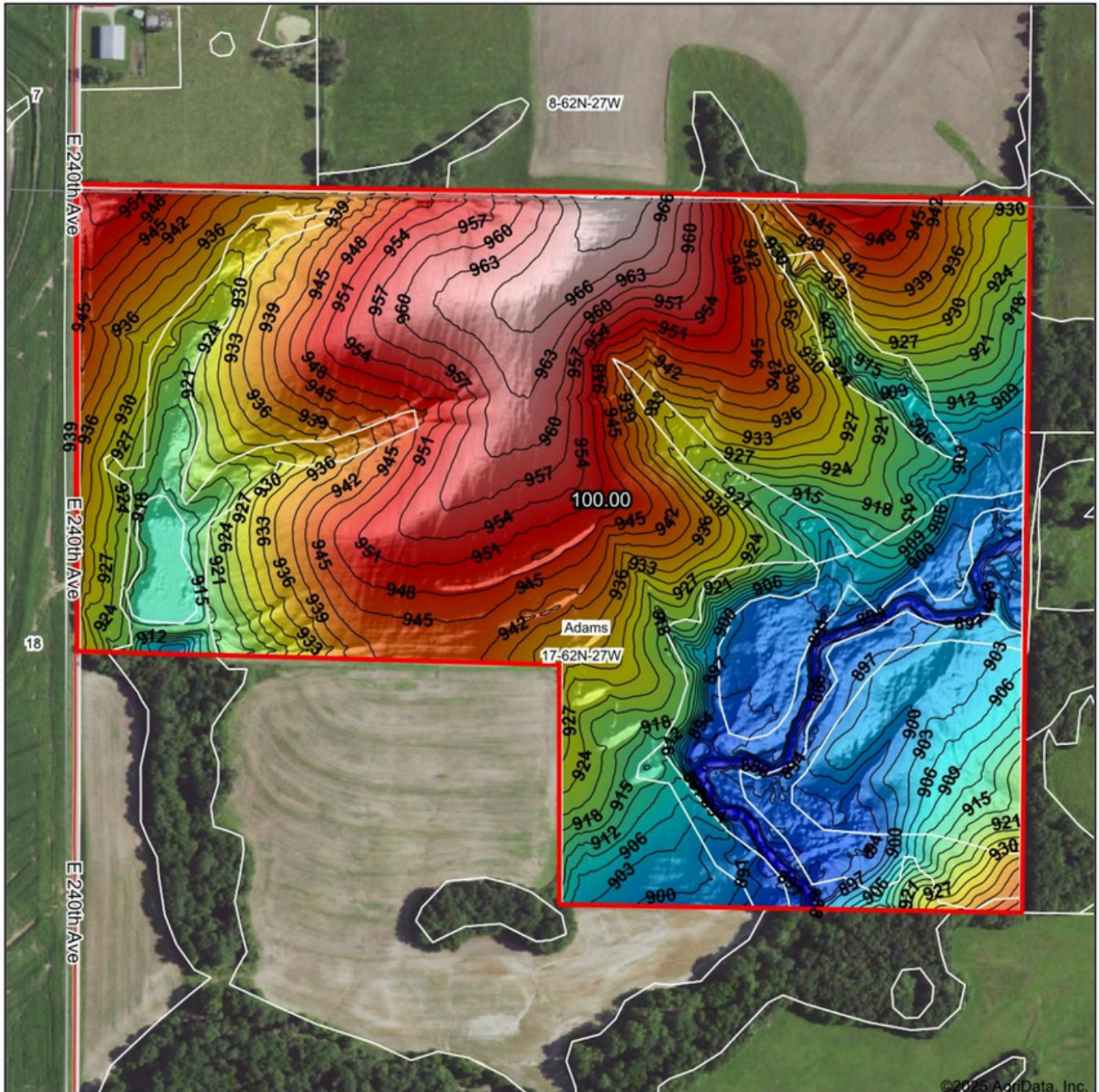
\*n: The aggregation method is "Weighted Average using all components"

\*c: Using Capabilities Class Dominant Condition Aggregation Method

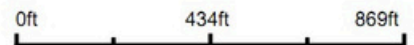
Soils data provided by USDA and NRCS.

# SURETY MAPS

## Topography Hillshade



Source: USGS 1 meter dem  
 Interval(ft): 3  
 Min: 885.3  
 Max: 972.7  
 Range: 87.4  
 Average: 929.2  
 Standard Deviation: 21.36 ft



2/5/2025

17-62N-27W  
 Harrison County  
 Missouri

Boundary Center: 40° 10' 29.2, -93° 58' 4.96



www.BarnesRealty.com  
 (800) 648-3177

Maps Provided By:



CUSTOMIZED ONLINE MAPPING  
 © AgriData, Inc. 2023 www.AgriDataInc.com

Field borders provided by Farm Service Agency as of 5/21/2008.

©2025 AgriData, Inc.

# FSA INFORMATION

---

**FSA INFO  
COMING SOON!**