



7 +/- ACRES, ST. CLAIR COUNTY, MO

For Sale

Here is 7+/- acres of prime hunting ground right next to the Osage river. Very thick timber coverage perfect for natural wildlife. The property is located five minutes west from Monegaw Springs, 15 minutes west of Osceola and highway 13.



18156 Hwy 59 Mound
City, MO 64470
(660)-442-3177

1711 Oregon Hiawatha,
KS 66434
(785)-742-4580

1708 Prairie View Rd, Suite
B Platte City, MO 64079
(816)-219-3010

www.BarnesRealty.com

PROPERTY FEATURES

Price:

\$5,500.00/taxable acre or
\$38,500.00 total

Real Estate Taxes:

TBD

FSA Info:

Shown Below

Location:

Tract is 5 minutes west from Monegaw Springs,
15 minutes west of Osceola and highway 13.

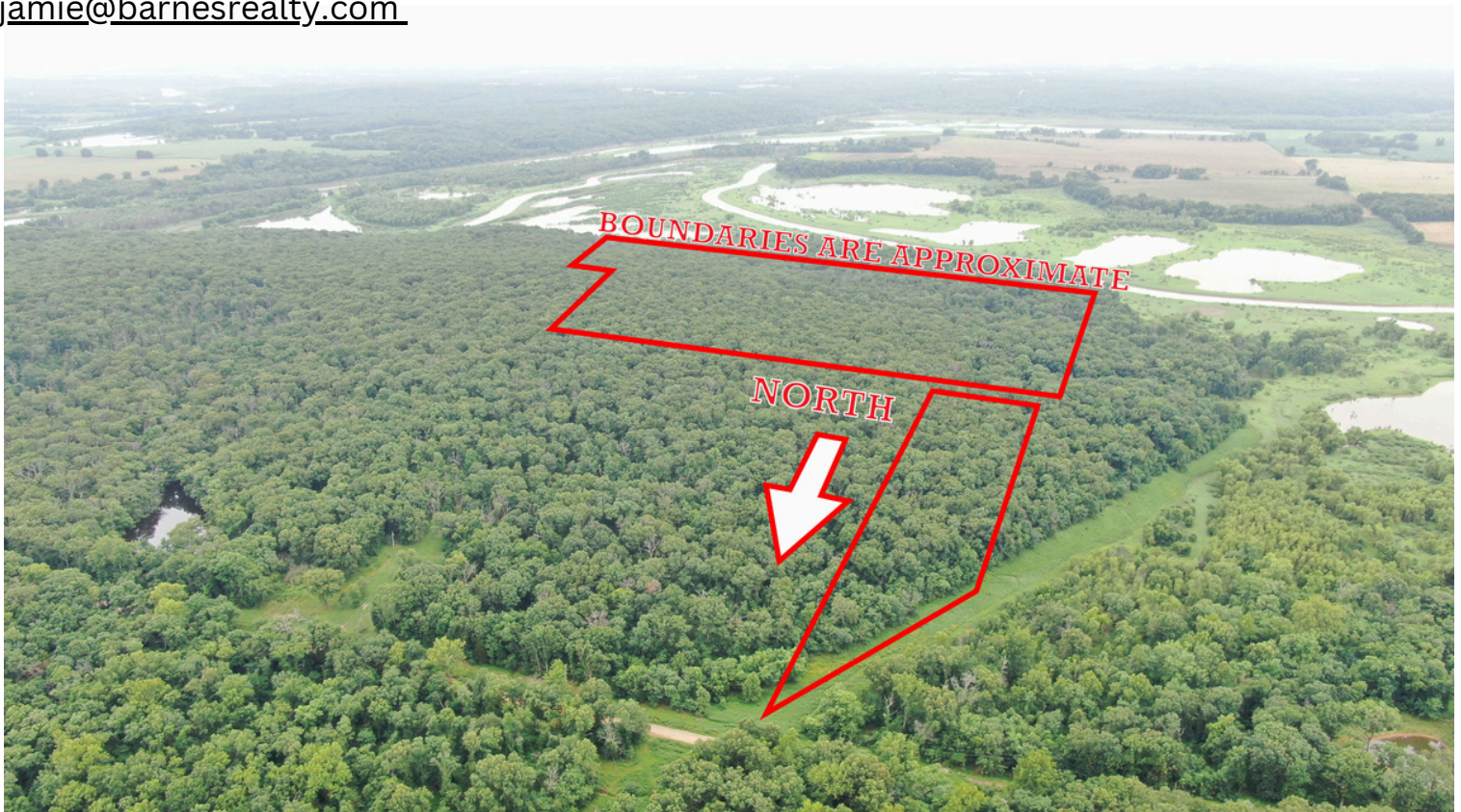
Improvements:

No improvements

Listing Agents:

Garrett Barnes: (660) 851-1495 or
garrett@barnesrealty.com

Jamie Barnes: (660) 851-1125 or
jamie@barnesrealty.com



Setting the trend for how Real Estate is sold in the Midwest.

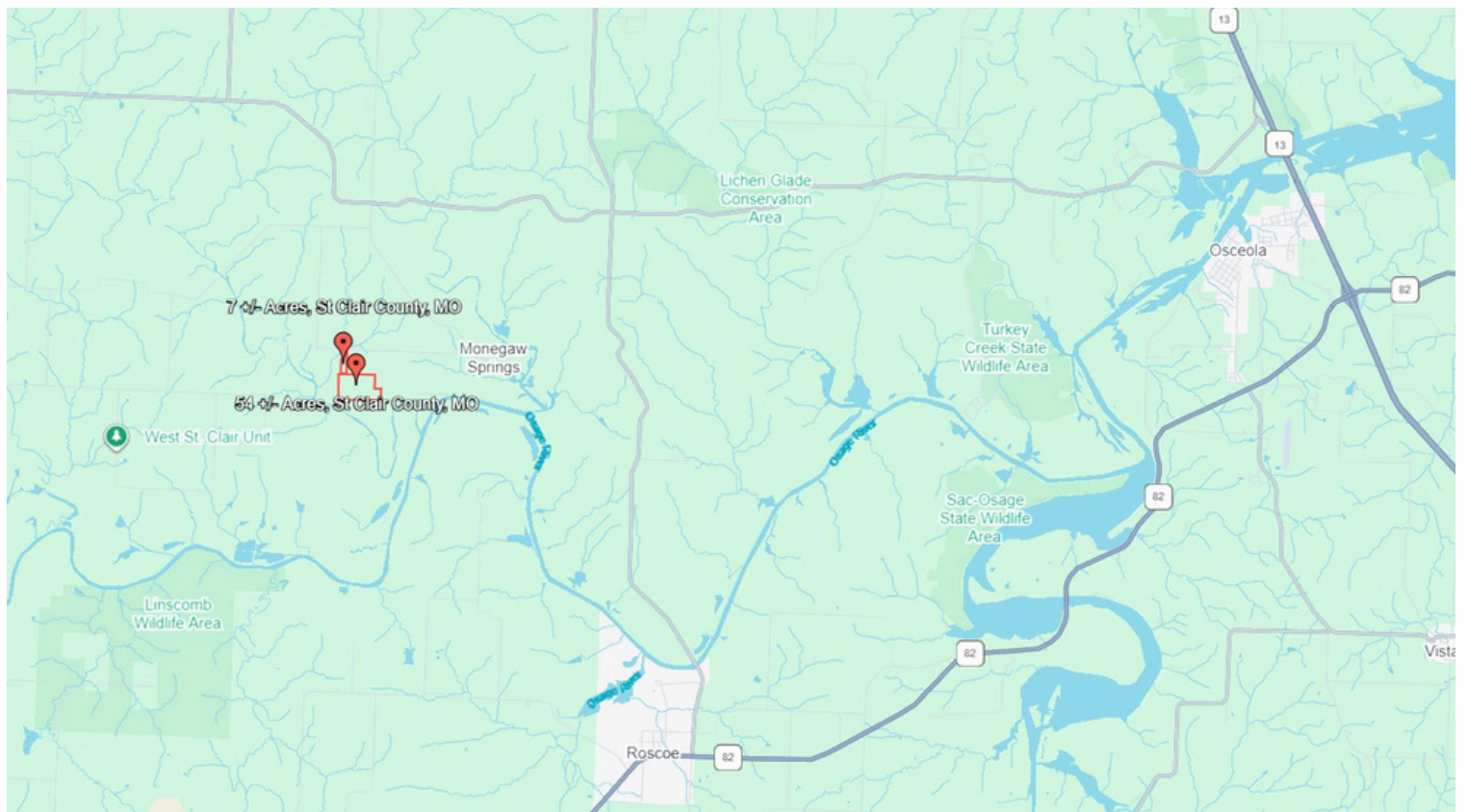
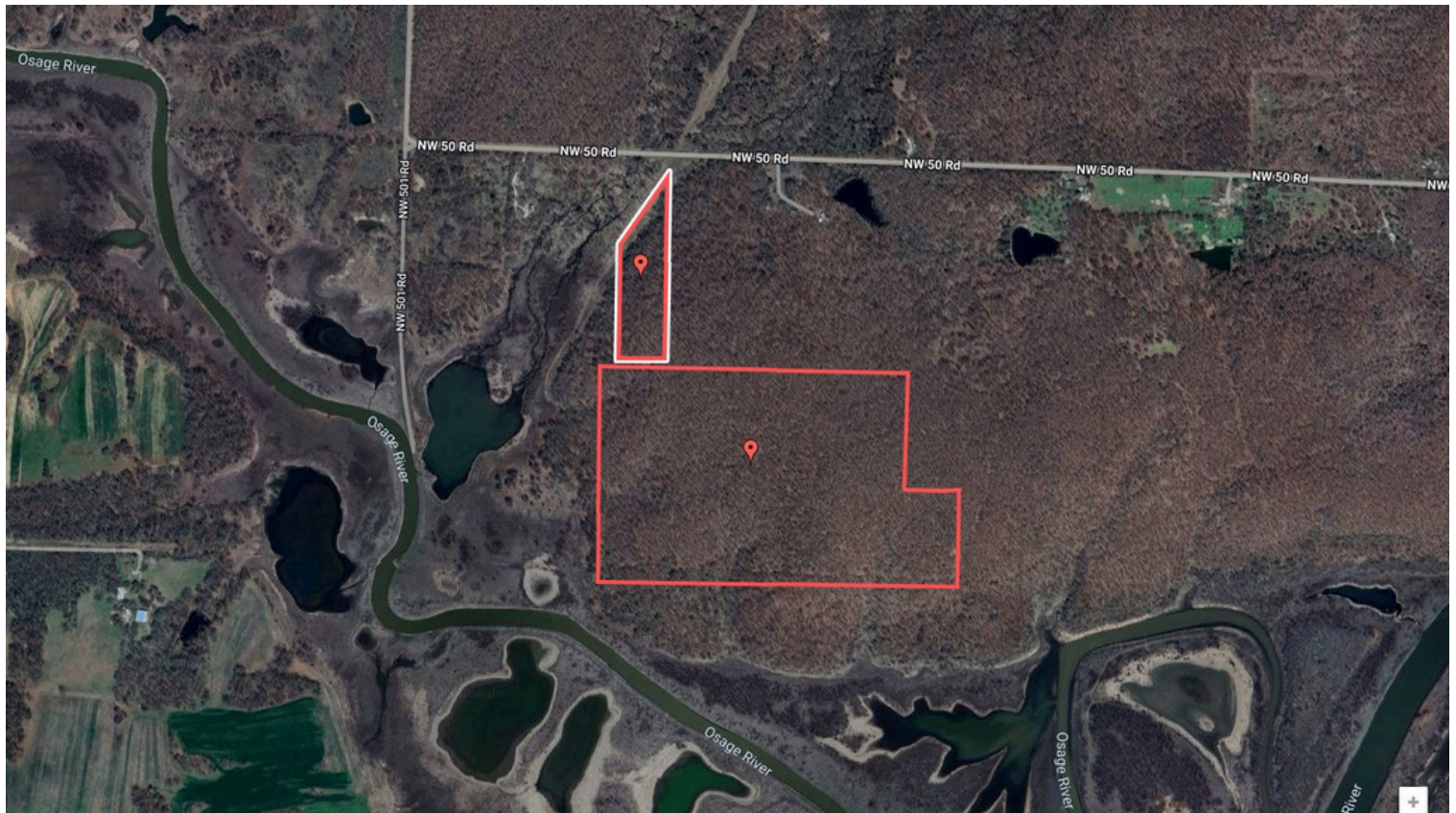
This information is thought to be accurate; however, it is subject to verification and no liability for error and omissions is assumed. Barnes Realty has made every effort to present accurate information on the property presented. Most of the information comes from outside sources: County/Government/Seller and human error can occur. It's the Buyer's responsibility to satisfy himself with the information presented and to determine the information to be true and accurate and the property to be suited for his intended use. The listing may be withdrawn with or without approval. The Seller further reserves the right to reject any and all offers. All inquiries, inspections, appointments, and offers must be sent through:

RICK BARNES, BROKER, BARNES REALTY COMPANY, 18156 HWY 59, MOUND CITY, MO 64470 PHONE NUMBER: 1-660-442-3177.

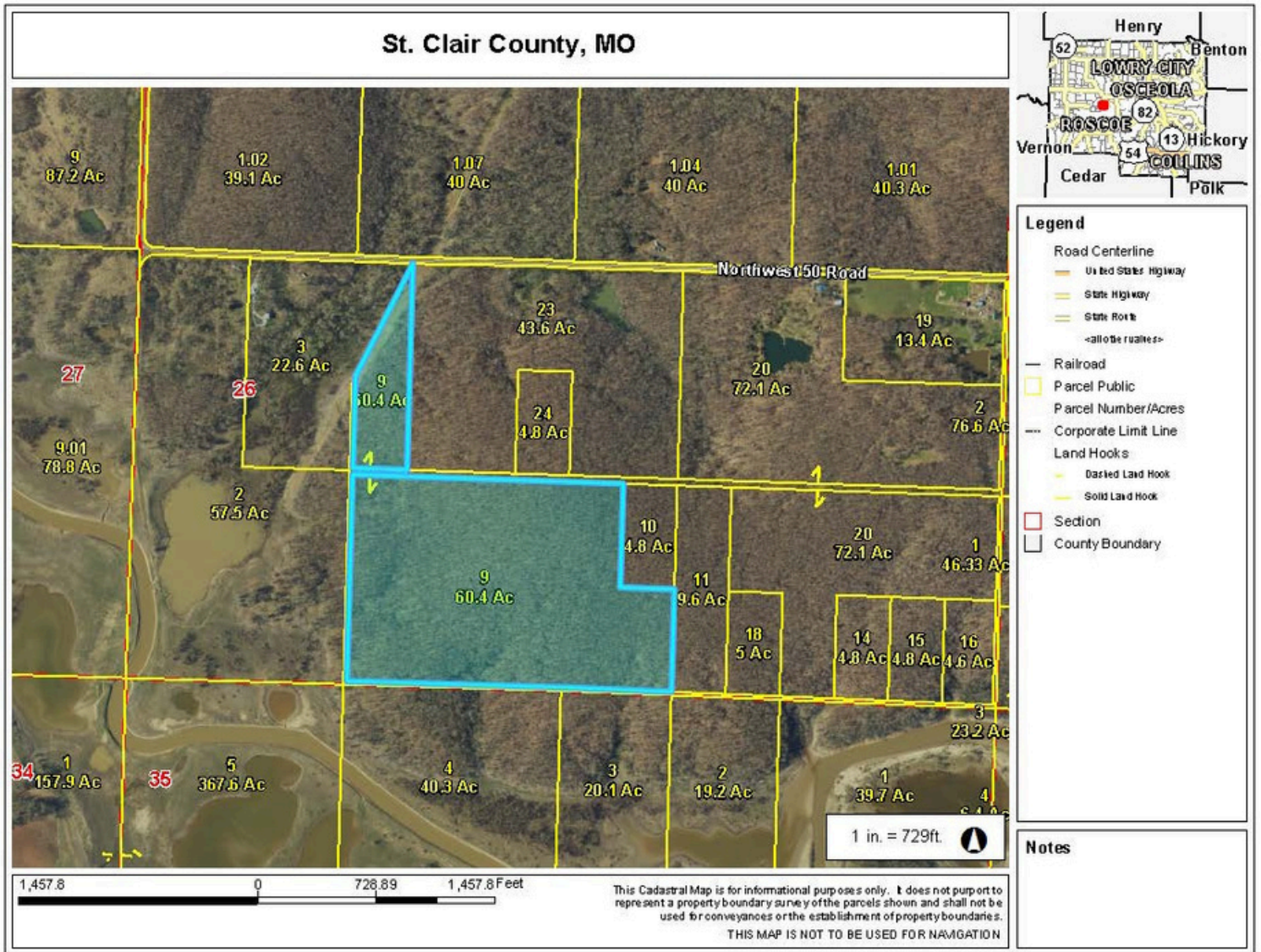
PHOTOS



AERIAL PHOTOS



TAX MAP



SURETY MAP

Aerial Map



Boundary Center: 38° 1' 50.55, -93° 52' 12.86

0ft 834ft 1668ft



www.BarnesRealty.com
(800) 648-3177

Maps Provided By:



© AgriData, Inc. 2023 www.AgriDataInc.com

26-38N-27W
St. Clair County
Missouri

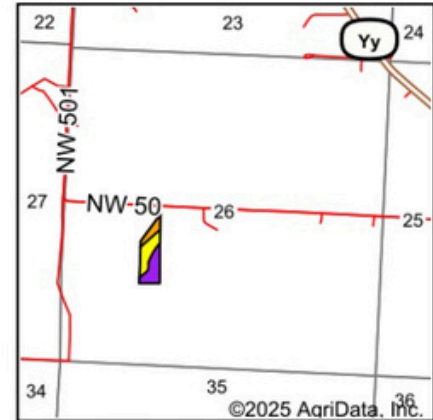
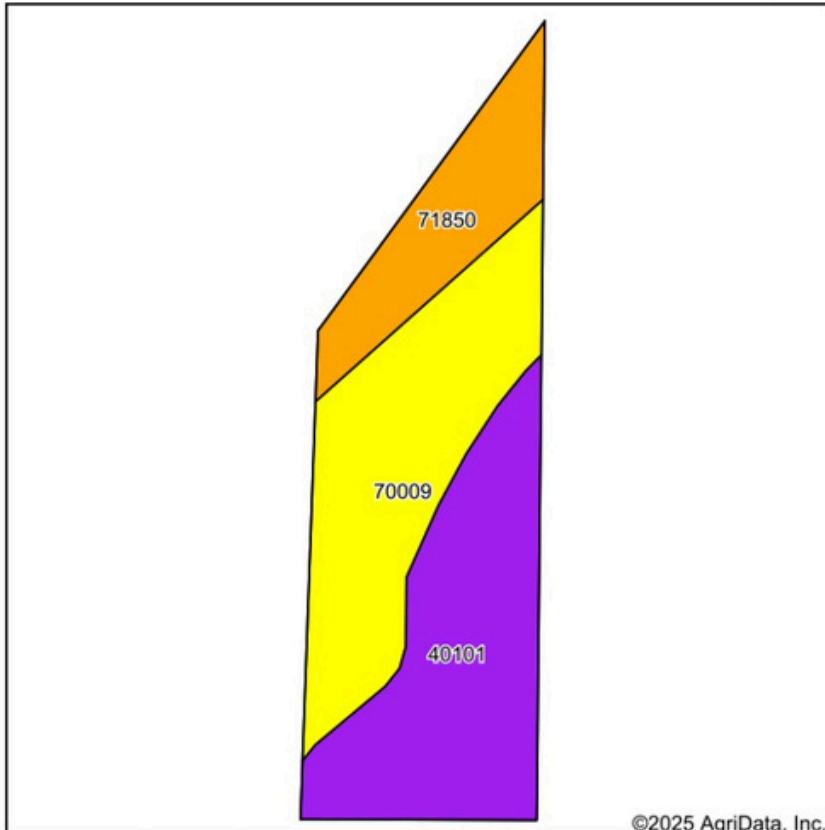


8/8/2025

Field borders provided by Farm Service Agency as of 5/21/2008.

SOIL MAP

Soils Map



State: **Missouri**
 County: **St. Clair**
 Location: **26-38N-27W**
 Township: **Osage**
 Acres: **7**
 Date: **8/8/2025**



Soils data provided by USDA and NRCS.

Area Symbol: MO185, Soil Area Version: 28

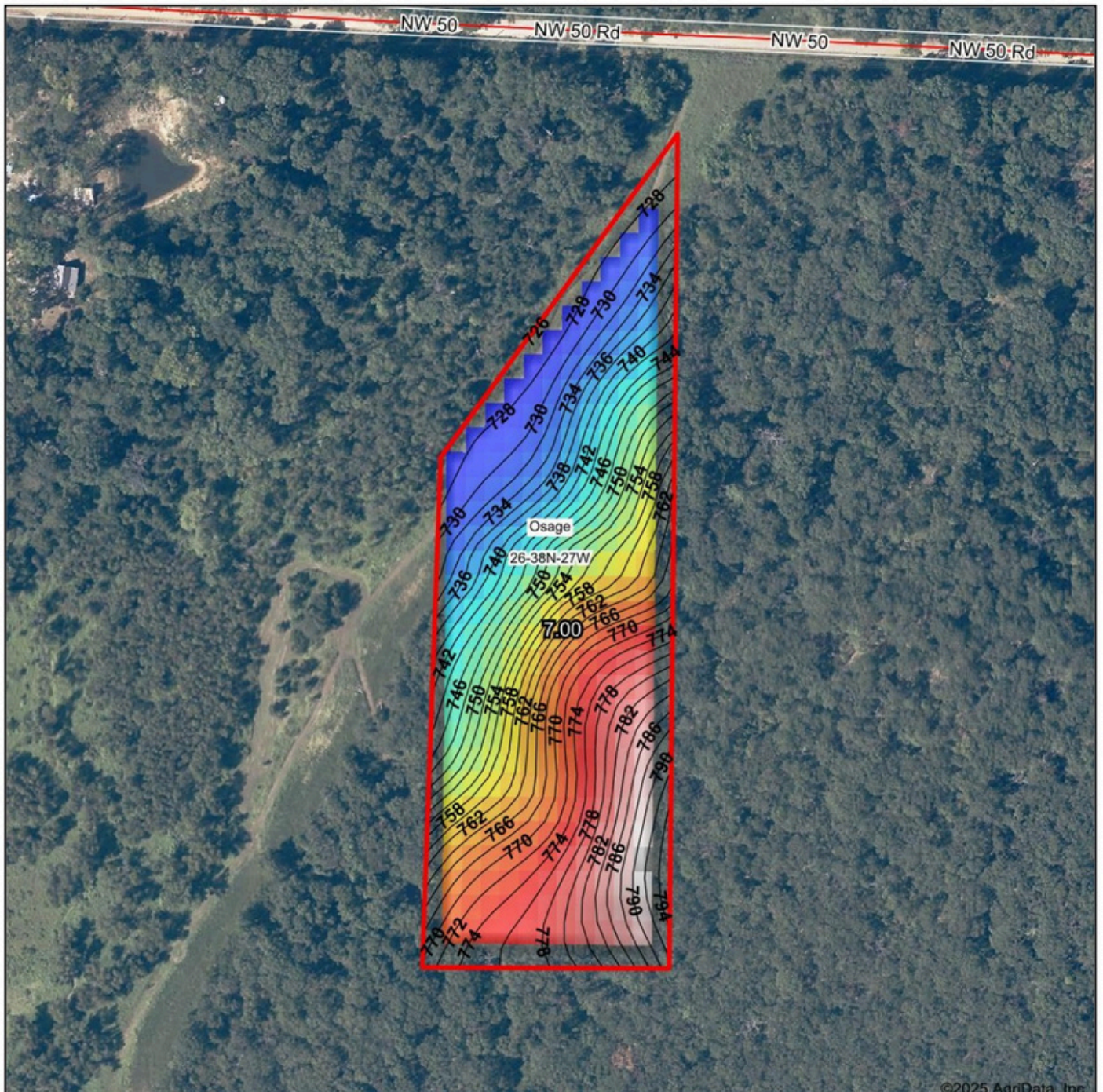
Code	Soil Description	Acres	Percent of field	Non-Irr Class Legend	Non-Irr Class *c	Range Production (lbs/acre/yr)	*n NCCPI Overall	*n NCCPI Corn	*n NCCPI Small Grains	*n NCCPI Soybeans
40101	Hector fine sandy loam, 5 to 25 percent slopes, stony	2.87	41.0%		VIIIs	0	26	24	25	14
70009	Goss gravelly silt loam, 8 to 15 percent slopes	2.81	40.1%		IVe	0	57	56	44	39
71850	Cleora fine sandy loam, 1 to 3 percent slopes, frequently flooded	1.32	18.9%		IIIw	425	64	64	50	47
Weighted Average					5.04	80.1	*n 45.6	*n 44.4	*n 37.3	*n 30.3

*n: The aggregation method is "Weighted Average using all components"

*c: Using Capabilities Class Dominant Condition Aggregation Method

TOPOGRAPHY MAP

Topography Hillshade



©2025 AgriData, Inc.

Low Elevation High



Maps Provided By:



© AgriData, Inc. 2023 www.AgriDataInc.com
Field borders provided by Farm Service Agency as of 5/21/2008.

Source: USGS 10 meter dem

Interval(ft): 2

Min: 727.0

Max: 792.2

Range: 65.2

Average: 757.3

Standard Deviation: 19.16 ft

0ft 215ft 429ft



8/8/2025

26-38N-27W
St. Clair County
Missouri

Boundary Center: 38° 1' 50.55, -93° 52' 12.86