



# **BRICK HOUSE & 5 +/- ACRES, MAITLAND MO 64466**

*For Sale*

Here is a beautiful home only 20 short minutes from Maryville and Mound City with a secluded setting, lots of privacy and an extended driveway. Plenty of room for a second family if needed to build an additional home and camper hookups out back with dog kennels and a whelping shed. Yes this is set up perfectly to raise dogs!



18156 Hwy 59 Mound  
City, MO 64470  
(660)-442-3177

1711 Oregon Hiawatha,  
KS 66434  
(785)-742-4580

1708 Prairie View Rd, Suite  
B Platte City, MO 64079  
(816)-219-3010

[www.BarnesRealty.com](http://www.BarnesRealty.com)



# PROPERTY FEATURES

**Price:** ~~\$550,000.00~~

**PRICE REDUCED: \$425,000.00**

**Taxes:**

2024 Taxes: \$2,665.83

**Lot Size:**

.5.5 - 6 acres

**Listing Agents:**

Agent: Jamie Barnes  
(660) 851-1125 or  
Jamie@BarnesRealty.com

Agent: Garrett Barnes  
(660) 851-1495 or  
Garrett@BarnesRealty.com

Agent: Alyssa Barnes  
(660) 851-1171 or  
Alyssa@BarnesRealty.com

**Bedrooms:**

4

**Foundation:**

Concrete

**Water:**

City

**Garage:**

2 Car: 24'x24'

**Baths:**

2 Full Baths

2 Half Baths

**Basement:**

Full Finished walk-out  
basement with kitchenette

**Sewer:**

Septic system: 1,000-  
1,500 gal tank for house,  
300 gal tank for concrete  
pad, 500 gal tank for whelp  
shed/detached garage

**Other Features:**

- New roof
- 2 new furnaces
- 2 new AC units
- Natural gas heating
- Orchard
- 3 extra camper hookups
- 50' x 30' barn - fully  
equipped with water,  
electric and sewer
- All appliances included
- 30' x 50 outbuilding - fully  
equipped with water,  
electric, sewer, and a full  
concrete floor
- 1,000ft blacktop driveway
- Broadband internet
- Two kitchens
- 5,000 sq. ft
- Large bedrooms with  
ceiling fans



Setting the trend for how Real Estate is sold in the Midwest.

This information is thought to be accurate; however, it is subject to verification and no liability for error and omissions is assumed. Barnes Realty has made every effort to present accurate information on the property presented. Most of the information comes from outside sources: County/Government/Seller and human error can occur. It's the Buyer's responsibility to satisfy himself with the information presented and to determine the information to be true and accurate and the property to be suited for his intended use. The listing may be withdrawn with or without approval. The Seller further reserves the right to reject any and all offers. All inquiries, inspections, appointments, and offers must be sent through:

RICK BARNES, BROKER, BARNES REALTY COMPANY, 18156 HWY 59, MOUND CITY, MO 64470 PHONE NUMBER: 1-660-442-3177.



# PHOTOS





# PHOTOS





# PHOTOS





# PHOTOS





# PHOTOS





# PHOTOS





# PHOTOS





# AERIAL MAPS

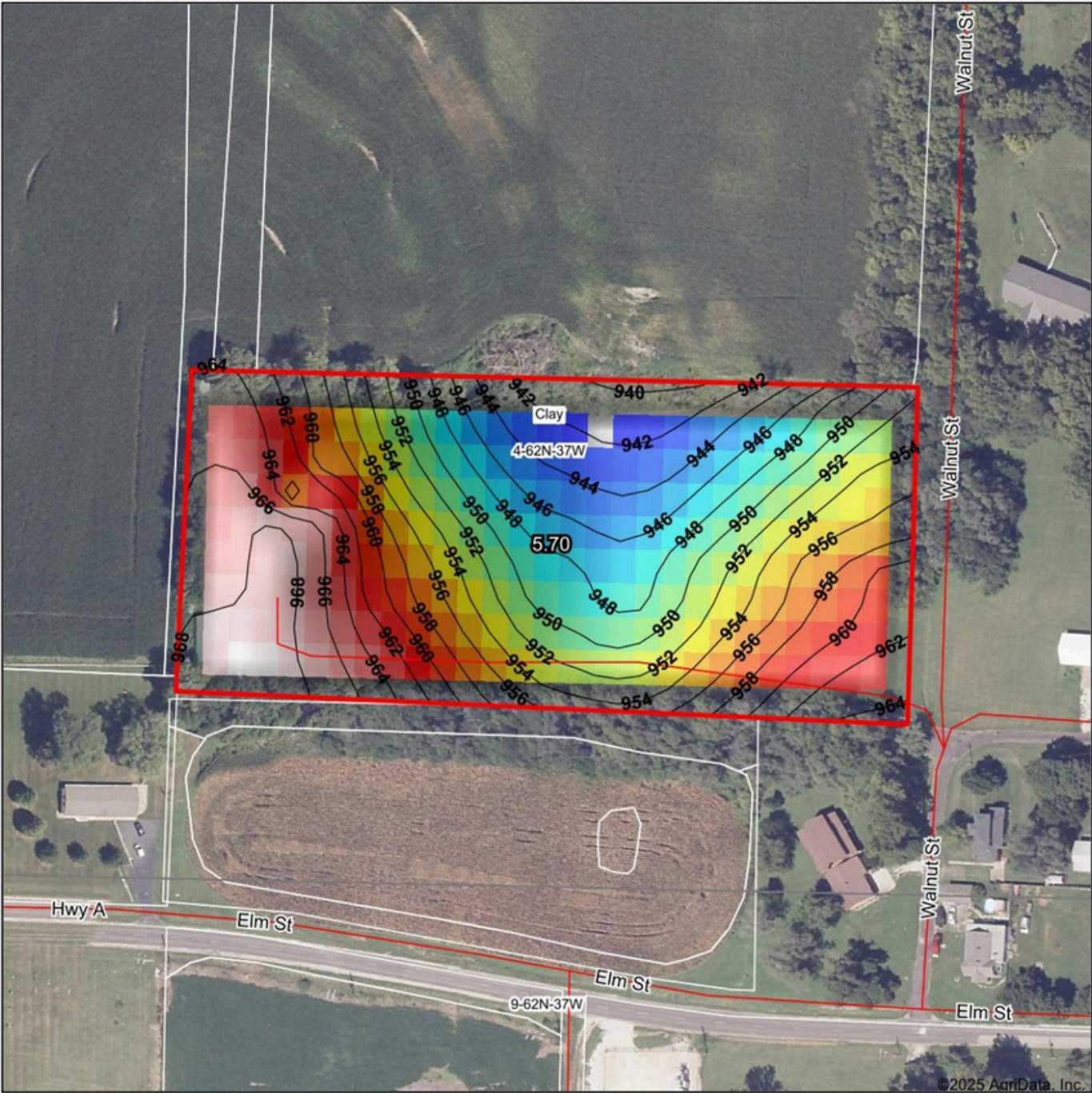
Aerial Map





# AERIAL MAPS

## Topography Hillshade



Maps Provided By:



© AgriData, Inc. 2023  
Field borders provided by Farm Service Agency as of 5/21/2008.

Source: USGS 10 meter dem  
Interval(ft): 2  
Min: 941.6  
Max: 969.7  
Range: 28.1  
Average: 956.0  
Standard Deviation: 7.64 ft

0ft 158ft 316ft



4/22/2025

4-62N-37W  
Holt County  
Missouri

Boundary Center: 40° 12' 13.7, -95° 4' 54.8