



BRICK HOUSE & 5 +/- ACRES, MAITLAND MO 64466

For Sale

Here is a beautiful home only 20 short minutes from Maryville and Mound City with a secluded setting, lots of privacy and an extended driveway. Plenty of room for a second family if needed to build an additional home and camper hookups out back with dog kennels and a whelping shed. Yes this is set up perfectly to raise dogs!



18156 Hwy 59 Mound
City, MO 64470
(660)-442-3177

1711 Oregon Hiawatha,
KS 66434
(785)-742-4580

1708 Prairie View Rd, Suite
B Platte City, MO 64079
(816)-219-3010

www.BarnesRealty.com

PROPERTY FEATURES

Price:

\$550,000.00 total

PRICE REDUCED: \$495,000.00

Listing Agents:

Agent: Jamie Barnes

(660) 851-1125 or

Jamie@BarnesRealty.com

Agent: Garrett Barnes

(660) 851-1495 or

Garrett@BarnesRealty.com

Agent: Alyssa Barnes

(660) 851-1171 or

Alyssa@BarnesRealty.com

Features:

- Whelping shed
- Large grass lot
- Dog kennels
- Camper hookups
- Private Driveway

Real Estate Taxes:

2024: \$2665.83

Location:

Walnut St in Maitland, MO near Hwy 113, 20 minutes south of Maryville MO



Setting the trend for how Real Estate is sold in the Midwest.

This information is thought to be accurate; however, it is subject to verification and no liability for error and omissions is assumed. Barnes Realty has made every effort to present accurate information on the property presented. Most of the information comes from outside sources: County/Government/Seller and human error can occur. It's the Buyer's responsibility to satisfy himself with the information presented and to determine the information to be true and accurate and the property to be suited for his intended use. The listing may be withdrawn with or without approval. The Seller further reserves the right to reject any and all offers. All inquiries, inspections, appointments, and offers must be sent through:

RICK BARNES, BROKER, BARNES REALTY COMPANY, 18156 HWY 59, MOUND CITY, MO 64470 PHONE NUMBER: 1-660-442-3177.

PHOTOS



PHOTOS



PHOTOS



PHOTOS



PHOTOS



PHOTOS



PHOTOS



AERIAL MAPS

Aerial Map



©2026 AgriData, Inc.



www.BarnesRealty.com
(800) 648-3177

Maps Provided by:



© AgriData, Inc. 2023 www.AgridataInc.com

Field borders provided by Farm Service Agency as of 5/21/2008.

Boundary Center: 40° 12' 13.7, -95° 4' 54.8

4-62N-37W
Holt County
Missouri

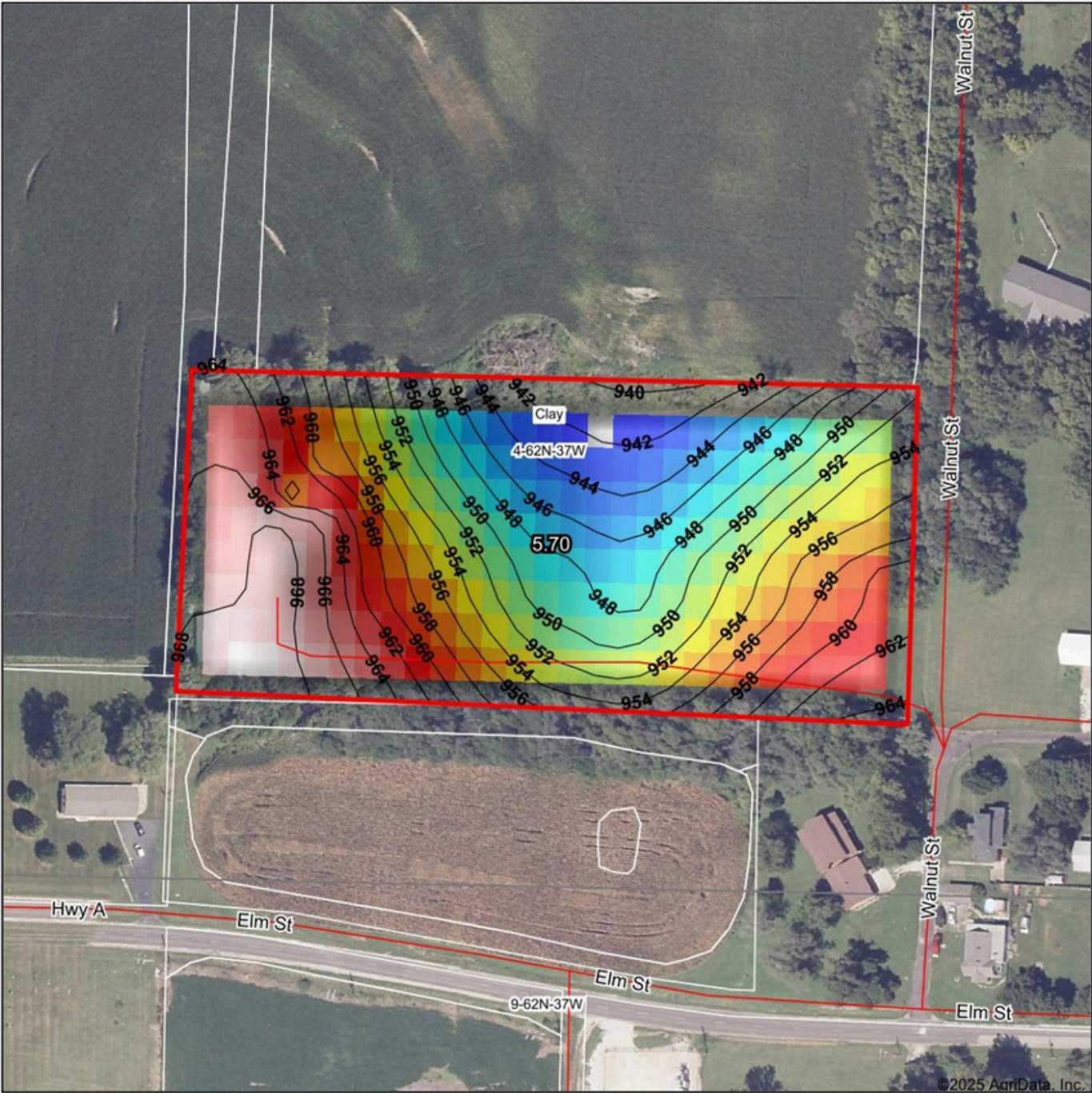
0ft 156ft 313ft



4/22/2025

AERIAL MAPS

Topography Hillshade



Maps Provided By:



© AgriData, Inc. 2023
Field borders provided by Farm Service Agency as of 5/21/2008.

Source: USGS 10 meter dem
Interval(ft): 2
Min: 941.6
Max: 969.7
Range: 28.1
Average: 956.0
Standard Deviation: 7.64 ft

0ft 158ft 316ft



4/22/2025

4-62N-37W
Holt County
Missouri

Boundary Center: 40° 12' 13.7, -95° 4' 54.8