



Real Estate Sales Specialists

Setting the trend for how Real Estate is sold in the Midwest.
www.BarnesRealty.com

18156 Hwy 59
Mound City, MO 64470
(660) 442-3177

1711 Oregon
Hiawatha, KS 66434
(785) 742-4580

1708 Prairie View Rd, Suite B
Platte City, MO 64079
(816) 219-3010

5 Acre +/- Riverfront Lots, Atchison County, MO

These tracts are located right on the Missouri River and are in prime hunting location!

LOCATION:

These lots are located Southwest of Hamburg, IA. Head west out of Hamburg on Highway 333/310th St/J64 for approx. 3.75 miles and curve south onto V Road. In about 2 miles the road will curve to the east, once you get to 250th Ave, head south and you run right into the lots.

PRICE:

East Lot \$55,500.00
West Lot \$45,000.00

IMPROVEMENTS:

These river lots are unimproved.

LISTING AGENT:

Garrett Barnes
(660) 851-1495 or
Garrett@BarnesRealty.com



BROKER PARTICIPATION:

Barnes Realty Company, as listing Broker, will gladly and fully cooperate with most licensed Real Estate Brokers to obtain a sale of the property on terms satisfactory to the current Owners.

Setting the trend for how Real Estate is sold in the Midwest.

This information is thought to be accurate; however it is subject to verification and no liability for error and omissions is assumed. Barnes Realty has made every effort to present accurate information on the property presented. Most of the information comes from outside sources: County/Government/Seller and human error can occur. It's the Buyer's responsibility to satisfy him self with the information presented and to determine the information to be true and accurate and the property to be suited for his intended use. The listing may be withdrawn with or without approval. The Seller further reserves the right to reject any and all offers.

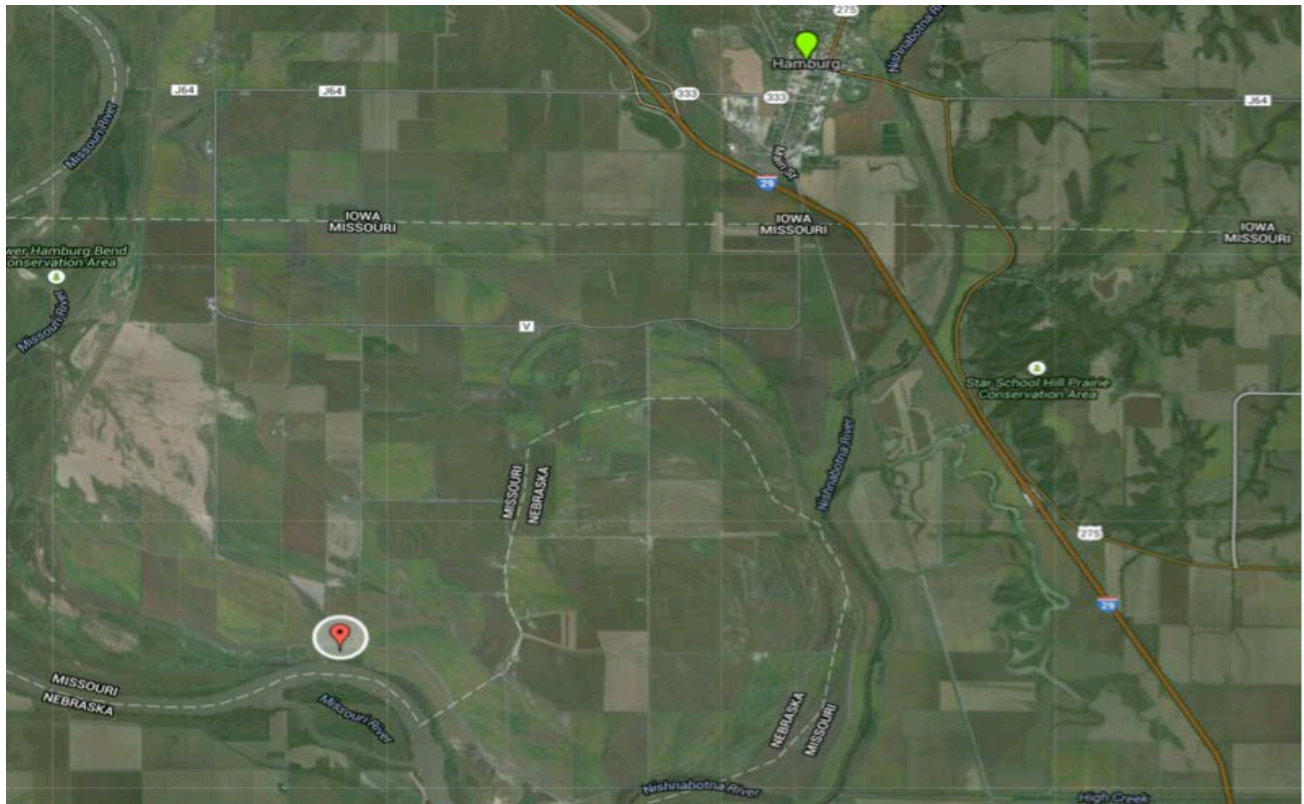
All inquiries, inspections, appointments, and offers must be sent through:

RICK BARNES, BROKER, BARNES REALTY COMPANY, 18156 HWY 59, MOUND CITY, MO 64470 PHONE NUMBER: 1-660-442-3177.

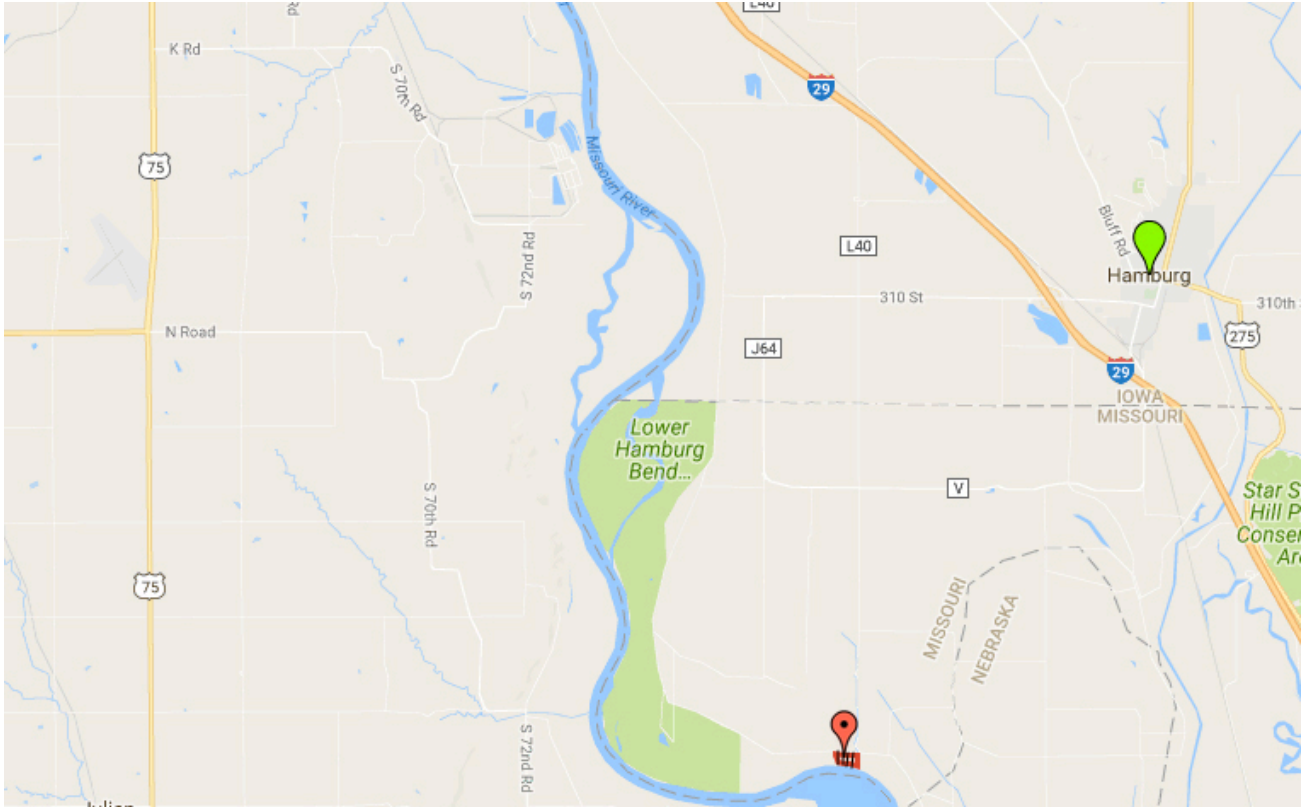
***5 Acre +/- Riverfront Lots, Atchison County, MO
Google Aerial***



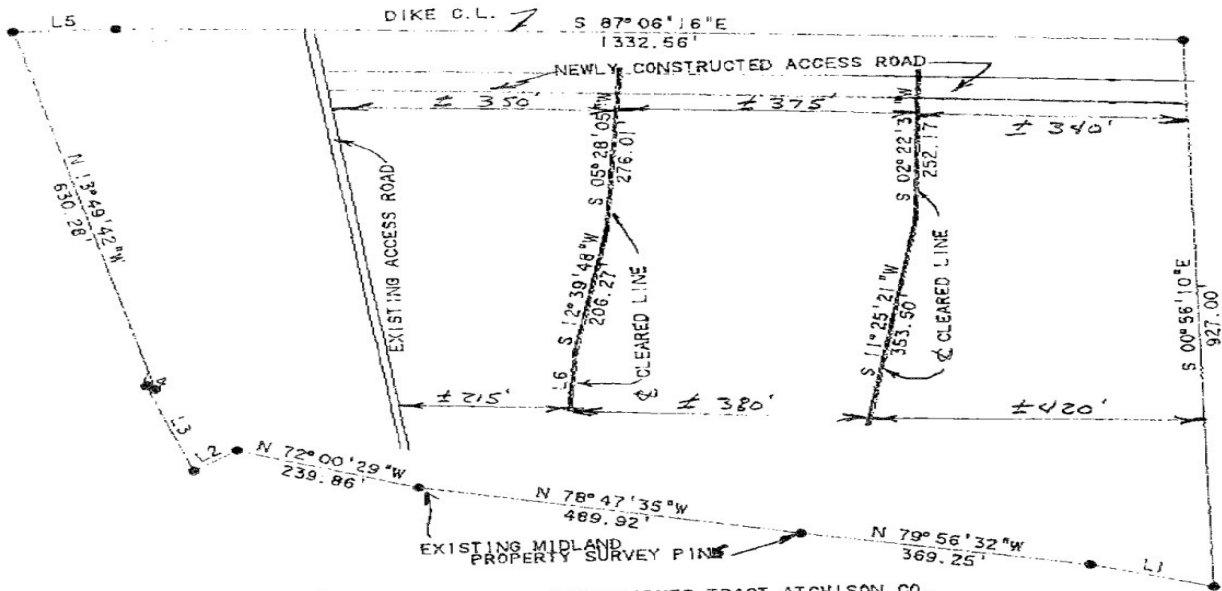
General Location



5 Acre +/- Riverfront Lots, Atchison County, MO Driving Map



Survey



LINE	BEARING	DISTANCE
L 1	N 75° 05' 56" W	160.02'
L 2	S 58° 19' 53" W	64.56'
L 3	N 20° 00' 28" W	158.01'
L 4	S 62° 24' 25" E	12.80'
L 5	S 89° 22' 25" E	129.23'
L 6	S 06° 28' 50" W	101.86'

5 Acre +/- Riverfront Lots, Atchison County, MO
Aerial Photos



5 Acre +/- Riverfront Lots, Atchison County, MO

